

Accelerate installation and service in confined spaces

Compact DRI relays with robust, industry-compliant plug-in pins

Let's connect.

Digital signal processing

Secure connection

Robust industry-compliant pin arrangement.

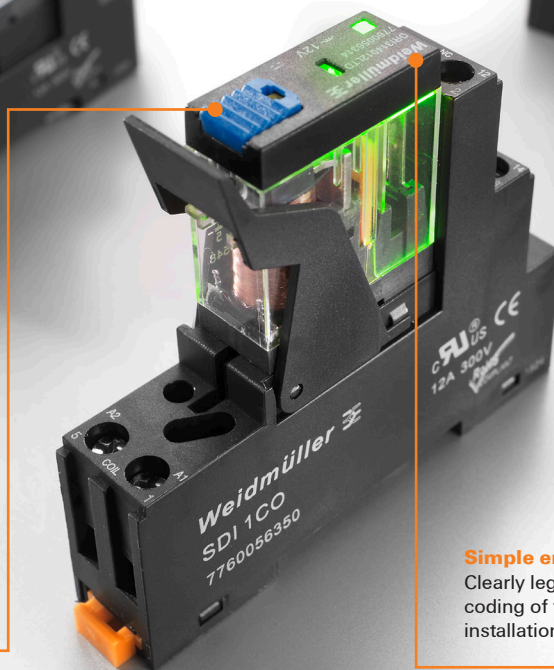
Secure status identification

The highly visible status LED with large-scale illumination ensures clear status recognition.



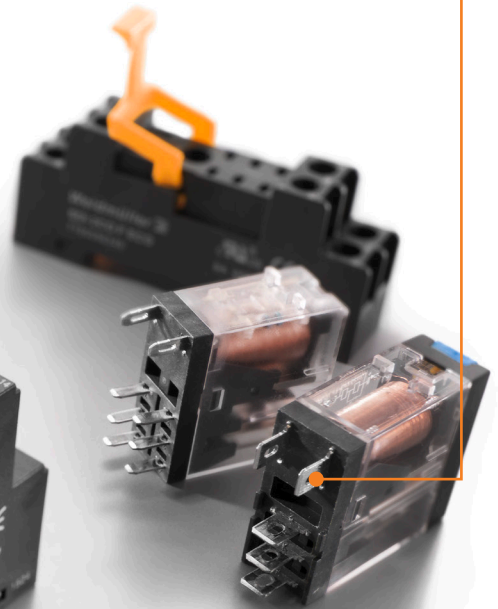
Support for installation and service

The user-friendly test button slots into the end position. This means any manipulation can be seen directly.



Simple error reduction

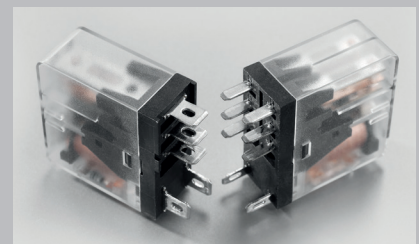
Clearly legible product recognition and colour coding of the test button reduce errors in installation and service.



Your
special
advantages:

Robust plug-in pins

Compact 1 and 2 CO contact relay with industry-compliant plug-in pins for reliable contacting, even in ambitious applications.

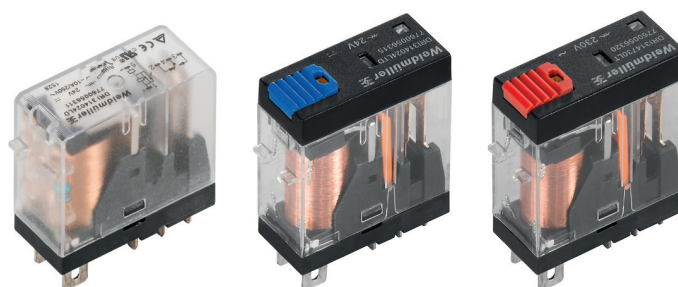


Weidmüller 

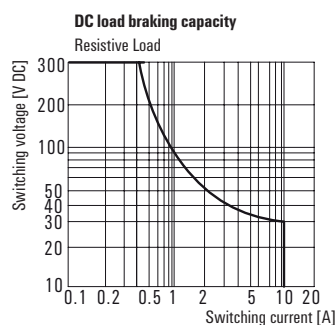
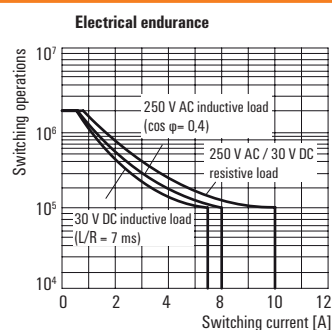
DRI relay

1 CO contact, AC/DC coil

- Robust industrial plug-in connections
- Optional: latching / spring return operable test button with coloured control voltage identification (AC coil: red / DC coil: blue)
- Optional: Mechanical switch position indication (for version with test button)
- Optional: Bright status LED (AC coil: red / DC coil: green)
- Optional: free-wheeling diode



Applications



Technical data

Output	
Rated switching voltage / Continuous current	250 V AC / 10 A
Max. switching voltage, AC	250 V
Min. switching power	10 mA @ 12 V, 100 mA @ 5 V
DC / AC Switching capacity (resistive), max.	240 W @ 24 V / 2500 VA
Contact material	AgNi
Mechanical service life	10 x 10 ⁶ switching cycles
Max. switching frequency at rated load	0.1 Hz
Rated data	
Ambient temperature (operational)	-40 °C...55 °C
Storage temperature	-40 °C...85 °C
Humidity	35...85 % rel. humidity, no condensation
Approvals	CE; cURus
Insulation coordination (EN 50178)	
Rated voltage	300 V
Impulse withstand voltage	5 kV (1.2/50 µs)
Dielectric strength input - output	5 kV _{eff} / 1 min
Creepage and clearance distance input - output	≥ 4 mm
Overvoltage category	III
Pollution degree	2

Dimensions	Plug-in connection
Depth x width x height (mm)	33.5 x 13 x 31

Note

Ordering data

Input	12 V DC 1CO	24 V DC 1CO	48 V DC 1CO	110 V DC 1CO	24 V AC 1CO	115 V AC 1CO	230 V AC 1CO
Rated control voltage	12 V DC	24 V DC	48 V DC	110 V DC	24 V AC	115 V AC	230 V AC
Rated current AC / DC	/ 44,4 mA	/ 21,8 mA	/ 11,2 mA	/ 4,8 mA	50 mA /	9,3 mA /	4,9 mA /
Power rating	530 mW	530 mW	530 mW	530 mW	1,2 VA	1,1 VA	1,1 VA
Pull-in/drop-out voltage, typ.	9 V / 1,8 V DC	18 V / 3,6 V DC	36 V / 7,2 V DC	82,5 V / 16,5 V DC	19,2 V / 7,2 V AC	92 V / 34,5 V AC	184 V / 69 V AC
Output							
Switch-on delay	≤ 15 ms	≤ 15 ms	≤ 15 ms	≤ 15 ms	≤ 15 ms	≤ 15 ms	≤ 15 ms
Switch-off delay	≤ 10 ms	≤ 10 ms	≤ 10 ms	≤ 10 ms	≤ 10 ms	≤ 10 ms	≤ 10 ms

Relay ordering data

with test button + LED	Type	DRI314012LTD	DRI314024LTD	DRI314048LTD	DRI314110LTD	DRI314524LT	DRI314615LT	DRI314730LT
+ Free-wheel diode	Order No.	7760056314	7760056315	7760056316	7760056317	7760056318	7760056319	7760056320
Note: other models available on request								

Note: other models available on request

Base ordering data

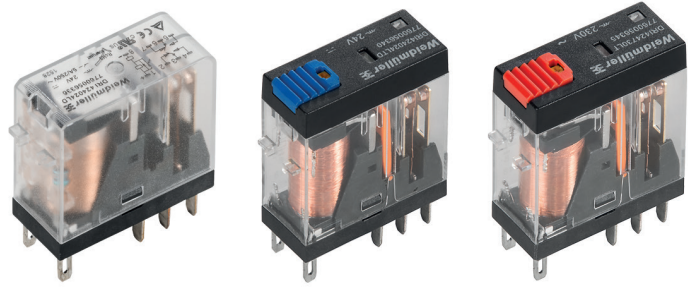
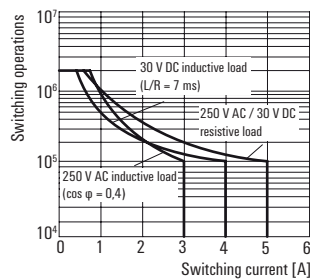
Description	Type	Order No.
Logical base	SDI 1CO	7760056350

Accessories ordering data

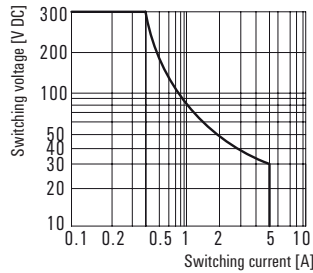
Description	Type	Order No.
Plastic clip	SDI clip	7760056352
Note		

DRI relay**2 CO contacts, AC/DC coil**

- Robust industrial plug-in connections
- Optional: latching / spring return operable test button with coloured control voltage identification (AC coil: red / DC coil: blue)
- Optional: Mechanical switch position indication (for version with test button)
- Optional: Bright status LED (AC coil: red / DC coil: green)
- Optional: free-wheeling diode

**Applications****Electrical endurance****DC load braking capacity**

Resistive Load

**Technical data****Output**

Rated switching voltage / Continuous current	250 V AC / 5 A
Max. switching voltage, AC	250 V
Min. switching power	10 mA @ 12 V, 100 mA @ 5 V
DC / AC Switching capacity (resistive), max.	150 W @ 24 V / 1250 VA
Contact material	AgNi
Mechanical service life	10 x 10 ⁶ switching cycles
Max. switching frequency at rated load	0.1 Hz

Rated data

Ambient temperature (operational)	-40 °C...55 °C
Storage temperature	-40 °C...85 °C
Humidity	35...85 % rel. humidity, no condensation
Approvals	CE; cURus

Insulation coordination (EN 50178)

Rated voltage	300 V
Impulse withstand voltage	5 kV (1.2/50 µs)
Dielectric strength input - output	5 kV _{eff} / 1 min
Dielectric strength of neighbouring contacts	1.5 kV _{eff} / 1 min.
Creepage and clearance distance input - output	≥ 4 mm
Overvoltage category	III
Pollution degree	2

Dimensions

Depth x width x height (mm)

Plug-in connection

33.5 x 13 x 31

Note**Ordering data****Input**

Rated control voltage
Rated current AC / DC

Power rating

Pull-in/drop-out voltage, typ.

Output

Switch-on delay

Switch-off delay

12 V DC 2CO

12 V DC
/ 44,4 mA

530 mW

9 V / 1.8 V DC

≤ 15 ms

≤ 10 ms

24 V DC 2CO

24 V DC
/ 21,8 mA

530 mW

18 V / 3.6 V DC

≤ 15 ms

≤ 10 ms

48 V DC 2CO

48 V DC
/ 11,2 mA

530 mW

36 V / 7.2 V DC

≤ 15 ms

≤ 10 ms

110 V DC 2CO

110 V DC
/ 4,8 mA

530 mW

82.5 V / 16.5 V DC

≤ 15 ms

≤ 10 ms

24 V AC 2CO

24 V AC
50 mA /

1.2 VA

19.2 V / 7.2 V AC

≤ 15 ms

≤ 10 ms

115 V AC 2CO

115 V AC
9.3 mA /

1.1 VA

92 V / 34.5 V AC

≤ 15 ms

≤ 10 ms

230 V AC 2CO

230 V AC
4,9 mA /

1.1 VA

184 V / 69 V AC

≤ 15 ms

≤ 10 ms

Ordering data

with test button + LED

Type

+ Free-wheel diode

Order No.

Note: other models available on request

DRI424012LTD

7760056339

DRI424024LTD

7760056340

DRI424048LTD

7760056341

DRI424110LTD

7760056342

DRI424524LT

7760056343

DRI424615LT

7760056344

DRI424730LT

7760056345**Base ordering data****Description**

Logical base

Type

SDI 2CO

Order No.**7760056351****Accessories ordering data****Description**

Plastic clip

Type

SDI clip

Order No.**7760056352****Note**

Accelerate installation and service in confined spaces

Compact DRI relays with robust, industry-compliant plug-in pins

In an industrial environment, service work needs to be carried out quickly, simply and reliably. Increasingly compact cabinets and miniaturised components in confined spaces are becoming a challenge. If components need to be replaced, the bended relay pins often cause errors which are difficult to locate.

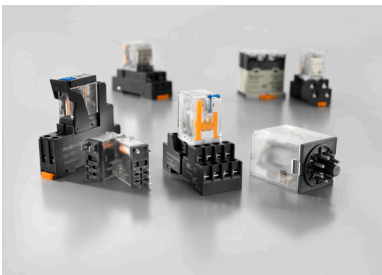
As the handling of components in practice plays an increasingly important role, DRI relays have particularly robust plug-in pins for quick and safe mounting. The test button with final locking to detect manipulation can be actuated without tools. Easily visible LED illumination of the status indicator also allows clear determination of status.

Both during installation of the cabinets and during subsequent servicing in mechanical and plant construction, DRI relays are the optimum coupling element for confined installation conditions.

We also have other relay modules available, contact us for more information or your preferred supplier

D-SERIES

The D-SERIES offers a range of industrial relays for loads of up to 400 V / 30 A with coils from 5 V DC to 380 V AC.



In quarrying operations or wind power plants: where the application gets the relays moving, a stable and reliable connection is required. In service cases, secure replacement with robust plug-in pins, simple handling using the test button and quick status identification by means of LED illumination.

For all Weidmüller Product Distributors please visit
www.weidmuller.com.au/au/distributors

Weidmüller Pty Ltd (Head Office)
43 Huntingwood Drive,
Huntingwood NSW 2148
Phone +61 (0) 2 9671 9999
Fax +61 (0) 2 9671 9900
Email info@weidmuller.com.au
www.weidmuller.com.au



apsindustrial.com.au

Sales: 1300 309 303
Sales Fax: 1300 309 308

CONNECT WITH US



MELBOURNE

Ph: (03) 8514 3500
Fax: (03) 8514 3510

SYDNEY

Ph: (02) 8898 6200
Fax: (02) 8898 6202

BRISBANE

Ph: (07) 3899 1322
Fax: (07) 3899 1422

ADELAIDE

Ph: (08) 8111 5100
Fax: (08) 8111 5105

PERTH

Ph: (08) 9249 9155
Fax: (08) 9249 9418