



## Pocket Picks

Inside this issue...

- | KATKO Stainless Steel Enclosed Switches (IP66)
- | Weidmüller Relays
- | Siemens SIRIUS ACT Push Buttons
- | Rittal AE Enclosures
- | Ramtight Flexible Conduit

Offers valid from January 21 to March 31 2019  
and redeemable through your preferred local wholesaler.  
All prices Ex. GST. and only available while stocks last.

ISSUE #2

[apsindustrial.com.au](http://apsindustrial.com.au)

## KATKO STAINLESS STEEL ENCLOSED SWITCHES

The KATKO Stainless Steel Product Range (KER) is designed for the needs of the food and beverage and mining industries.



- | Designed for hygienic and heavy environments
- | Easy to install and to keep clean
- | IP66, AISI 316, acid proof
- | Padlockable
- | Available up to 1600 A

### 3 POLE STAINLESS STEEL ENCLOSED HYGIENIC ISOLATING SWITCHES

| PART NUMBER | IE A             | KW               | ENCLOSURE SIZE | NET PRICE |
|-------------|------------------|------------------|----------------|-----------|
|             | AC-23 (415/690V) | AC-23 (415/690V) |                |           |
| KER340Y/R   | 40/32            | 22/30            | H23            | \$345.00  |
| KER363Y/R   | 40/40            | 22/37            | H32            | \$380.00  |
| KER380Y/R   | 63/40            | 30/37            | H32            | \$390.00  |

### STAINLESS STEEL ENCLOSED ISOLATING SWITCHES



- | IP66, AISI 316, acid proof
- | Padlockable stainless steel handle
- | Door interlock with defeat mechanism
- | Available up to 160 A

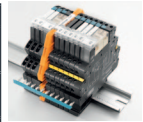
| PART NUMBER |             | IE A<br>AC-23 (415/690V) | KW<br>AC-23 (415/690V) | ENCLOSURE SIZE | NET PRICE |
|-------------|-------------|--------------------------|------------------------|----------------|-----------|
| FLAT ROOF   | ANGLED ROOF |                          |                        |                |           |
| KER340R     |             | 40/32                    | 22/30                  | H24T           | \$365.00  |
|             | KER340RS    | 40/32                    | 22/30                  | H24T           | \$425.00  |

**SPECIAL NEW YEAR PRICING ▲**

## TERMSERIES RELAYS

### 1CO / 2CO

| TYPE           | DESCRIPTION                | PART NUMBER | NET PRICE |
|----------------|----------------------------|-------------|-----------|
| TRS 24VDC 1CO  | Screw Clamp 6A<br>24 V DC  | 1122770000  | \$8.50    |
| TRS 24VDC 2CO  | Screw Clamp 8A<br>24 V DC  | 1123490000  | \$11.50   |
| TRS 230VUC 1CO | Screw Clamp 6A<br>230 V UC | 1122820000  | \$16.00   |
| TRS 230VUC 2CO | Screw Clamp 8A<br>230 V UC | 1123540000  | \$17.00   |



### ACCESSORIES

| CROSS CONNECTS       | NUMBER OF POLES | COLOUR | PART NUMBER | NET PRICE |
|----------------------|-----------------|--------|-------------|-----------|
| ZQV 1.5N/R6.4/2 GE   | 2 / 6.4 mm      | Yellow | 1193670000  | \$0.75    |
| ZQV 1.5N/R6.4/10 GE  | 10 / 6.4 mm     | Yellow | 1193680000  | \$4.00    |
| ZQV 1.5N/R6.4/19 GE  | 19 / 6.4 mm     | Yellow | 1193690000  | \$7.50    |
| ZQV 1.5N/R12.8/10 GE | 10 / 12.8 mm    | Yellow | 1193700000  | \$8.00    |

## DRI RELAYS (MAX SWITCHING VOLTAGE 250 V AC)

### 1CO / 2CO WITH TEST BUTTON + LED

| TYPE            | RATE CONTROL VOLTAGE | CONTINUOUS CURRENT | PART NUMBER | NET PRICE |
|-----------------|----------------------|--------------------|-------------|-----------|
| DRI314524LT 1CO | 24 V AC              | 10A                | 7760056318  | \$4.50    |
| DRI314730LT 1CO | 230 V AC             | 10A                | 7760056320  | \$4.50    |
| DRI424524LT 2CO | 24 V AC              | 5A                 | 7760056343  | \$5.00    |
| DRI424730LT 2CO | 230 V AC             | 5A                 | 7760056345  | \$5.00    |



### 1CO / 2CO WITH TEST BUTTON + LED + FWD

| TYPE             | RATE CONTROL VOLTAGE | CONTINUOUS CURRENT | PART NUMBER | NET PRICE |
|------------------|----------------------|--------------------|-------------|-----------|
| DRI314024LTD 1CO | 24 V DC              | 10A                | 7760056315  | \$3.80    |
| DRI424024LTD 2CO | 24 V DC              | 5A                 | 7760056340  | \$4.00    |

### DRI RELAY BASE

| TYPE      | DESCRIPTION   | PART NUMBER | NET PRICE |
|-----------|---|-------------|-----------|
| SDI 1CO   | Logical Base  | 7760056350  | \$2.10    |
| SDI 2CO   | Logical Base  | 7760056351  | \$2.20    |
| SRC-I QVS | Jumper to common 1CO or 2CO bases, sold in 8-way segments | 1132070000  | \$6.00    |

**SPECIAL NEW YEAR PRICING ▲**

**SIEMENS SIRIUS ACT PUSH BUTTONS**

Powerful machines need powerful push buttons and signaling devices and the Siemens SIRIUS ACT range from APS Industrial is your answer.



**PUSH BUTTONS AND LAMPS - METAL (3SU) 22MM CUTOUT IP69K**

**COMPLETE PUSH BUTTONS**

| PART NUMBER | COLOUR | NO | NC | NET PRICE |
|-------------|--------|----|----|-----------|
| PB-M-BLK    | Black  | 1  |    | \$8.87    |
| PB-M-RED    | Red    |    | 1  | \$8.87    |
| PB-M-GRN    | Green  | 1  |    | \$8.87    |
| PB-M-BLU    | Blue   | 1  |    | \$8.87    |



**PUSH BUTTONS AND LAMPS - PLASTIC (3SU) 22MM CUTOUT IP69K**

**COMPLETE PUSH BUTTONS**

| PART NUMBER | COLOUR | NO | NC | NET PRICE |
|-------------|--------|----|----|-----------|
| PB-P-BLK    | Black  | 1  |    | \$7.70    |
| PB-P-RED    | Red    |    | 1  | \$7.70    |
| PB-P-GRN    | Green  | 1  |    | \$7.70    |
| PB-P-BLU    | Blue   | 1  |    | \$7.70    |



**COMPLETE INDICATOR LIGHT (INTEGRATED LED)**

| PART NUMBER | VOLTAGE  | NET PRICE |
|-------------|----------|-----------|
| IND-M-110-* | 110VAC   | \$13.20   |
| IND-M-230-* | 230VAC   | \$13.20   |
| IND-M-24-*  | 24VAC/DC | \$9.35    |



**COMPLETE INDICATOR LIGHT (INTEGRATED LED)**

| PART NUMBER | VOLTAGE  | NET PRICE |
|-------------|----------|-----------|
| IND-P-110-* | 110 AC   | \$12.61   |
| IND-P-230-* | 230 AC   | \$12.61   |
| IND-P-24-*  | 24 AC/DC | \$8.76    |



Replace \* with required colour | e.g IND-M-110-YLW

Replace \* with required colour | e.g IND-P-110-YLW

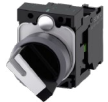
**COMPLETE SELECTOR SWITCH (CAN BE ILLUMINATED)**

| PART NUMBER  | POSITION   | COLOUR      | NO | NC | NET PRICE |
|--------------|------------|-------------|----|----|-----------|
| SEL2-M-NO    | 2 Position | Black/White | 1  |    | \$15.60   |
| SEL2-M-NO+NC | 2 Position | Black/White | 1  | 1  | \$16.36   |
| SEL3-M-NO    | 3 Position | Black/White | 2  |    | \$17.62   |



**COMPLETE SELECTOR SWITCH (CAN BE ILLUMINATED)**

| PART NUMBER  | POSITION   | COLOUR      | NO | NC | NET PRICE |
|--------------|------------|-------------|----|----|-----------|
| SEL2-P-NO    | 2 Position | Black/White | 1  |    | \$11.26   |
| SEL2-P-NO+NC | 2 Position | Black/White | 1  | 1  | \$13.16   |
| SEL3-P-NO    | 3 Position | Black/White | 2  |    | \$14.56   |



**COMPLETE MRH PUSH BUTTON - "EMERGENCY STOP"**

| PART NUMBER | DESCRIPTION            | NO | NC | NET PRICE |
|-------------|------------------------|----|----|-----------|
| ESTOP-M     | 40mm, twist to release |    | 1  | \$21.82   |



**COMPLETE MRH PUSH BUTTON - "EMERGENCY STOP"**

| PART NUMBER | DESCRIPTION            | NO | NC | NET PRICE |
|-------------|------------------------|----|----|-----------|
| ESTOP-P     | 40mm, twist to release |    | 1  | \$17.86   |



## SPECIAL #4



### RITTAL ENCLOSURES

We're proud to bring the world-class range of Rittal Enclosures to the local industry and have increased local stockholdings in every capital city to ensure you get the products you need sooner.

**PRICE FREEZE PLUS  
FURTHER DISCOUNT  
ON SELECTED AE  
ENCLOSURES ▲**

| PART NUMBER | DESCRIPTION                       | NET PRICE |
|-------------|-----------------------------------|-----------|
| AE1032500   | Enclosure,200Wx300H,120D,RAL7035  | \$89.00   |
| AE1034500   | Enclosure,300Wx400Hx210D,RAL7035  | \$135.00  |
| AE1038500   | Enclosure,380Wx600Hx210D,RAL7035  | \$154.00  |
| AE1045500   | Enclosure,400Wx500Hx210D,RAL7035  | \$158.00  |
| AE1058500   | Enclosure,600Wx800Hx250D,RAL7035  | \$316.00  |
| AE1060500   | Enclosure,600Wx600Hx210D,RAL7035  | \$217.00  |
| AE1090500   | Enclosure,600Wx1000Hx250D,RAL7035 | \$411.00  |
| AE1180500   | Enclosure,800Wx1000Hx300D,RAL7035 | \$510.00  |



## SPECIAL #5

# RAMTIGHT

### RAMTIGHT FLEXIBLE CONDUIT

Ramtight Flexible Steel Conduit has been designed and manufactured to the highest standard ISO 9001:2008 and complies with AS/NZS 2053.8. This ensures you are getting a high quality product which is suitable for use in all arduous areas including industrial and hazardous areas.

#### CONDUIT

| PART NUMBER | DESCRIPTION                           | NET PRICE     |               |
|-------------|---------------------------------------|---------------|---------------|
|             |                                       | 1-9 BOXES     | 10+ BOXES     |
| RT-1625-B   | 16mm Flexible Steel Conduit (25m box) | \$95 per box  | \$85 per box  |
| RT-2025-B   | 20mm Flexible Steel Conduit (25m box) | \$100 per box | \$90 per box  |
| RT-2525-B   | 25mm Flexible Steel Conduit (25m box) | \$125 per box | \$110 per box |

#### CONDUIT FITTINGS

| PART NUMBER | DESCRIPTION                               | NET PRICE |           |
|-------------|---|-----------|-----------|
|             |   | MOQ 10PCS | MOQ 25PCS |
| RTF-16      | 16mm Nickel Plated Brass Fitting          | \$4.25    | \$3.80    |
| RTF-20      | 20mm Nickel Plated Brass Straight Fitting | \$4.25    | \$3.80    |
| RTF-25      | 25mm Nickel Plated Brass Straight Fitting | \$5.80    | \$5.20    |



**SPECIAL NEW YEAR PRICING ▲**

## MELBOURNE

5-7 Corporate Ave,  
Rowville, Melbourne VIC 3178

Ph: (03) 8514 3500  
Fax: (03) 8514 3510

Sales: 1300 309 303  
Sales Fax: 1300 309 308

## SYDNEY

Unit P1, 10-16 South Street  
Rydalmere, Sydney NSW 2116

Ph: (02) 8898 6200  
Fax: (02) 8898 6202

Sales: 1300 309 303  
Sales Fax: 1300 309 308

## BRISBANE

Unit 2, 5 Breene Place  
Morningside, Brisbane QLD 4170

Ph: (07) 3899 1322  
Fax: (07) 3899 1422

Sales: 1300 309 303  
Sales Fax: 1300 309 308

## ADELAIDE

13-15 Shepley Avenue  
Panorama, Adelaide SA 5041

Ph: (08) 8111 5100  
Fax: (08) 8111 5105

Sales: 1300 309 303  
Sales Fax: 1300 309 308

## PERTH

56 Millrose Drive,  
Malaga, Perth WA 6090

Ph: (08) 9249 9155  
Fax: (08) 9249 9418

Sales: 1300 309 303  
Sales Fax: 1300 309 308



## OUR LOCATIONS

### National footprint with strategic local stockholdings.

APS Industrial is headquartered in Melbourne and in addition has a national network of offices in Adelaide, Perth, Sydney and Brisbane supported by strategic local stockholdings and expert technical and application knowledge.

[apsindustrial.com.au](http://apsindustrial.com.au)

CONNECT WITH US

