



## PARTEX MARKING SYSTEMS

At Partex, we lead the world in industrial marking systems. We develop and manufacture products for the identification of wires, cables, pipes and components. From the individual electrician to the world's largest companies, our unique marking systems contribute towards increased efficiency and higher safety levels.

Quality and an environmental approach are natural parts of Partex's business and accordingly we are certificated to the ISO 9001, ISO 14001 and IRIS.

ISO 9001  
ISO 14001  
BUREAU VERITAS  
Certification



IRIS  
BUREAU VERITAS  
Certification



### MARKING METHODS



#### SINGLE CHARACTERS

Consists of single character markers that can be combined with each other to give total marking flexibility.



#### MULTI CHARACTERS

Allows you to order markers already printed with the complete information in accordance with your specification.



#### DO-IT-YOURSELF

Allows you to produce your own markers on site.



### MATERIAL

#### PVC

PVC stands for polyvinyl chloride, and it contains halogens. PVC has a natural flame decreasing property. It has a long life span and is sufficiently resistant to climatic factors. The material is strong and flexible. The temperatures range is -30°C to +60°C (-22°F to 140°F). Examples of products PA, PC, PK, PQ, PY, PT+, PM etc.

#### ZEREX - HALOGEN FREE

Polyether-based thermoplastic, a compound of polyurethane (tpu). Zerex is a halogen free flame proof extrusion compound developed for applications requiring limited smoke and toxin generation. The temperature range is -30°C to +90°C (-22°F to +194°F). It has been approved for use in the subway systems of New York. Product with a Z is halogen free, such as PAZ, PKZ, POZ, PTZ etc.



### DIRECTIVES



The RoHS Directive aims to reduce the risks to human health and the environment by replacing and restricting hazardous chemical substances in electric and electronic equipment. The Directive also aims to improve the prospects of cost-effective and sustainable recycling of material waste from electronic and electronic equipment. RoHS = Restriction of the use of certain Hazardous Substances in electrical and electronic equipment.

<http://eur-lex.europa.eu/>



Regulation (EU) No 907/2006 concerns the registration, evaluation, authorisation and restriction of chemical substances. It also contains requirements addressed to the users of chemicals, unlike previous legislation. REACH = Registration, Evaluation, Authorisation and restriction of Chemicals.

<http://eur-lex.europa.eu/>

## PACKAGING OPTIONS



**Reel**  
Semi cut markers



**Compact disc**  
Semi cut markers /  
Continuous marker  
profile



**Strip pack**  
Cut / loose markers



**Single bag**  
Marker strips



**Unsorted**  
Standard number  
sequences



**Sorted**  
To suit customer  
requirements



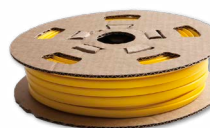
**Paginated**  
Standard number  
sequences



**Mini box**  
Heat shrinkable  
tubing



**Carton**  
Marker strips



**DN-reel**  
Continuous profile



**Reel**  
Continuous marker  
profile



**Box**  
Continuous profile  
High quantity

## INTERNATIONAL COLOUR CODE



0

RAL9011



1

RAL8015



2

RAL3018



3

RAL2004



4

RAL1021



5

RAL6001



6

RAL5010



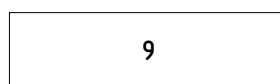
7

RAL4006



8

RAL7005



9

RAL9010



+

RAL3018



-

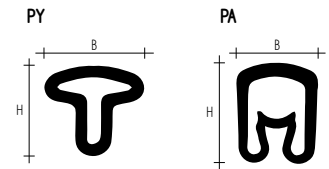
RAL5010



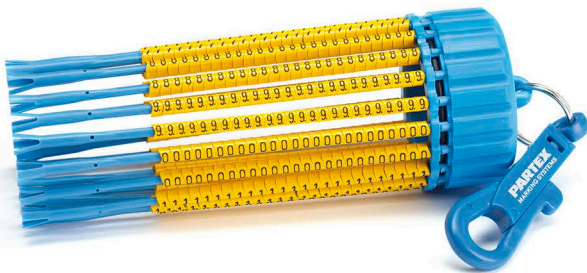
- + Permanent grip and adjustable sleeve, spring-action bellows.
- + Chevron cut for twist protection. PA is available in Halogen free material (ZEREX).
- + A-Z, 0-9 in yellow or white with black print as standard.
- + 0-9 in international colour code. Special colours on request.

TYPE	DIAMETER (mm)	AREA (mm <sup>2</sup> )	AWG	LENGTH (mm)	NO. OF CHARACTERS	MARKER HEIGHT (mm)	MARKER WIDTH (mm)	TEXT HEIGHT (mm)	STRIP PACK CUT/LOOSE MARKERS	SINGLE BAG MARKER STRIPS	REEL SEMI CUT MARKERS	COMPACTA DISC SEMI CUT MARKERS
PY-01	10 - 20	~0.2 - 0.7	~24 - 19	3	1	3.3	3.5	2.6	5 x 200 pcs	-	1000 pcs	-
PA-02/PAZ02	13 - 30	~0.2 - 1.5	~22 - 16	3	1	3.6	3.5	2.6	5 x 200 pcs	250 pcs	1000 pcs	500 pcs
PA-1/PAZ1	2.5 - 5.0	~15 - 4.0	~16 - 11	3	1	5.5	4.2	2.6	5 x 200 pcs	250 pcs	1000 pcs	500 pcs
PA-2/PAZ2	4.0 - 10.0	~2.5 - 16.0	~13 - 5	4	1	9.5	6.6	4.0	5 x 100 pcs	250 pcs	-	250 pcs
PA-3/PAZ3	8.0 - 16.0	~16.0 - 70.0	~5 -	6	1	16.5	11.0	4.0	5 x 20 pcs	-	-	-

AWG and mm<sup>2</sup> sizes for guidance only.



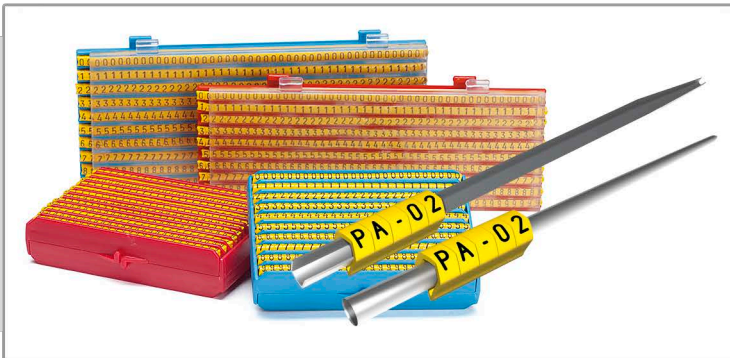
## MD/MDH - INSTALLATION TOOL AND HOLDER FOR PA MARKERS



- + The MD / MDH form a complete installation kit for PA02 and PA1 markers.
- + An excellent aid for production, installation or maintenance work.
- + The holder is easily loaded with the refill applicators.

TYPE	HOLDER AND APPLICATOR WITH STANDARD KIT	EMPTY HOLDER	EMPTY APPLICATORS	APPLICATOR WITH STANDARD KIT	APPLICATOR WITH COLOUR CODE	APPLICATOR WITH 3-PHASE MARKING KIT
PA-02 (Red)	MDH2002S	MDH2002	MD-02	MD-02S	MD-02SCC09	-
PA-1 (Blue)	MDH2010S	MDH2010	MD-10	MD-10S	MD-10SCC09	MD-10FMS

- + Flexible aid for service and maintenance marking
- + Pocket size – easy to take along
- + CAS: Double-sided for right and left-mounting

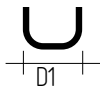


Tools	PAD-3M	PAD-3T	PAD-4M	PAD-4T	PAD-5M	PAD-5T	PAV-02M	PAV-10M
DESIGNED FOR	PA-02	PA-02	PA-1	PA-1	PA-1	PA-1	PA-01	PA-1
MATERIAL	Stainless steel	Teflon coated	Stainless steel	Teflon coated	Stainless steel	Teflon coated	Stainless steel	Stainless steel

PAD



PAV



CASSETTES	CAS-600	CAS-500	PAM-02	PAM-10
DESIGNED FOR	PA-02	PA-1	PA-02	PA-1
CASSETTE COLOUR	Red	Blue	Red	Blue
MAX NUMBER OF SLEEVES	600 pcs	500 pcs	440 pcs	440 pcs

SRP/SRC - STORAGE BOX

SRP

- + Robust steel plate storage box for Partex compacta discs
- + Detachable upper tray for cable accessories

SRC

- + A cardboard storage box for Partex compacta discs

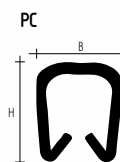




- + Open marker sleeve for already connected wires.
- + Simple "clip-on mounting" for secure, highly legible identification.
- + Twist-protected for secure combination marking.
- + Yellow or white with black print as standard.
- + 0-9 in international colour code. Special colours on request.

TYPE	DIAMETER [mm]	AREA [mm <sup>2</sup> ]	AWG	LENGTH [mm]	NO. OF CHARACTERS	MARKER HEIGHT [mm]	MARKER WIDTH [mm]	TEXT HEIGHT [mm]	STRIP PACK CUT/LOOSE MARKERS OR STRIPS
PC-10	2.4 - 3.0	~0.4 - 1.5	~22 - 16	3	1	3.6	3.7	2.6	5 x 200 pcs
PC-20	3.0 - 4.0	~1.5 - 3.0	~16 - 12	3	1	4.2	4.5	2.6	5 x 200 pcs
PC-30	4.0 - 5.0	~3.0 - 4.0	~12 - 11	3	1	9.5	5.7	2.6	5 x 200 pcs
PC-40	5.0 - 6.2	~4.0 - 5.0	~11 - 10	4	1	16.5	6.9	4.0	5 x 200 pcs

AWG and mm<sup>2</sup> sizes for guidance only



## PK/PKZ/POK - COMBINATION CABLE MARKER

**PK / POK**

- + Easy mounted onto PKH/POH holders to fit any size of cable, tube or pipe.
- + Yellow or white with black print as standard.
- + 0-9 in international colour code. Special colours on request.
- + PK is available in Halogen free material (ZEREX).

**PKH / POH**

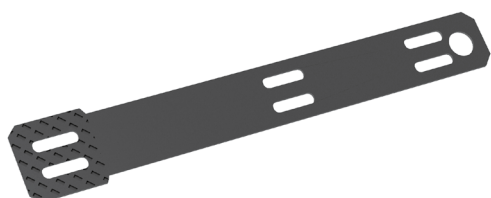
- + Holders, easily mounted with cable ties

TYPE	DIAMETER [mm]	LENGTH [mm]	NUMBER OF CHARACTERS	MARKER HEIGHT [mm]	MARKER WIDTH [mm]	TEXT HEIGHT	STRIP PACK CUT/LOOSE MARKERS	COMPACTA DISC SEMI CUT MARKERS
PK-2	-	4	1	-	11.3	4.0	5 x 100 pcs	500 pcs
PKZ	-	4	1	-	11.3	3.2	5 x 100 pcs	500 pcs
POK10	5.0 - 6.5	4	1	4.3	11.3	-	-	500 pcs

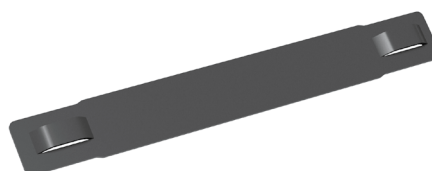
PKH / POH MARKER HOLDER	PKH070	PKH070POL*	PKH110POL	POH07	POH12	POH18	POH30
MAXIMUM NUMBER OF POK	10	10	20	7	12	18	30
MAXIMUM NUMBER OF PK 2/4	10	10	20	8	13	19	30
MAXIMUM NUMBER OF PKZ 2/6	-	7	13	5	9	13	20
NUMBER PER PACK (BAG)	100 pcs	100 pcs	100 pcs	100 pcs	100 pcs	100 pcs	100 pcs

\*PKH070POL, PKH110POL, POH07 and POH12 are made in outdoor grade halogen free, black Polyamide 6.6. The other holders are made in hard PVC.

PKH



POH

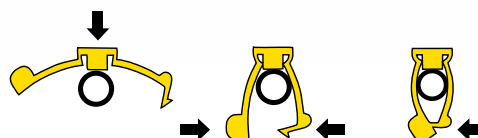


- + Open combination marking with locking function for already connected wires.
- + Halogen free polyamide 6.6.
- + Yellow or white with black print as standard.
- + 0-9 in international colour code. Special colours and prints on request.



TYPE	DIAMETER [mm]	AREA [mm <sup>2</sup> ]	AWG	LENGTH [mm]	NO. OF CHARACTERS	MARKER HEIGHT [mm]	MARKER WIDTH [mm]	TEXT HEIGHT [mm]	BAG MARKER STRIPS
PCA10	2.2 - 3.6	~0.5 - 2.5	~20 - 14	4	1	9	5	3	10 strips x 32 Stück
PCA20	3.6 - 6.0	~2.5 - 6.0	~14 - 10	4	1	13	5	3	10 strips x 32 Stück

AWG and mm<sup>2</sup> sizes for guidance only



- + Stainless steel markers and cable ties for aggressive environments.
- + Available both as single character markers and customized markers.
- + Holders are available with slits or with holes.



TYPE	DESCRIPTION	LENGTH X WIDTH [mm]	SLIT / HOLE WIDTH [mm]	MAX NUMBER OF SINGLE CHARACTERS	PACKAGING
PKS10040	Holder	10,3 x 47,0	4,8	6	50 pcs/bag
PKS10060	Holder	10,3 x 65,0	4,8	9	50 pcs/bag
PKS10080	Holder	10,3 x 87,0	4,8	13	50 pcs/bag
PKS10100	Holder	10,3 x 109,0	4,8	17	50 pcs/bag
PKS10120	Holder	10,3 x 128,0	4,8	20	50 pcs/bag



TYPE	DESCRIPTION
PKS10006PP#	Strips of characters. # = A-Z, 0-9 etc.
PKS10GR100	<b>Compartment storage box, marker set 1:</b> 5 marker strips at 10 markers of each of the following characters: 0 1 2 3 4 5 6 7 8 9 + - ~ = EARTH / . : and blank. Holder PKS10040FQS (50 pcs), PKS 10060FQS (50 pcs) and PKS10120FQS (50 pcs) and cable ties (100 pcs).
PKS10GR200	<b>Compartment storage box, marker set 2:</b> 5 marker strips at 10 markers of each of the following characters: A B C D E F G H I J K L M N O P Q R S T U V W X Y Z Å Ä Ö Ù ( and blank.
PSK5000-PKS	<b>Compartment storage box:</b> 50 of each of the following character: A B C D E F G H I J K L M N O P Q R S T U V W X Y Z, 0 1 2 3 4 5 6 7 8 9, /, GRD, +, -, cable ties (300 pcs), holders PKS10060FQS (50 pcs) and holders PKS10100FQS (100 pcs).

STAINLESS CABLE TIES AVAILABLE IN LENGTHS OF 150/200/360 MM. WIDTH: 4.6 MM.



PKS10MT	Manual tie fixing tool
PKS10GS4MT	Automatic tie fixing tool



- + Transparent holder for marker tags PF, PFC and PP+ profile.
- + Mounted with cable ties.

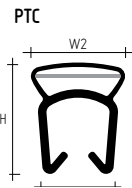
TYPE	PUNCHED PROFILE	LENGTH [mm]	WIDTH [mm]	WIDTH OF PUNCHED HOLE [mm]	PACKAGING
PM-10	No	33	6.0	3.0	100 pcs
PM-20	No	33/45/66	11.3	3.0	100/50 pcs depending on marker size
PM-24	No	33/66	13.9	3.9	100/50 pcs depending on marker size
PM-20Q	Yes	20 m	11.3	3.0	DN reel
PM-24Q	Yes	20 m	13.9	3.9	DN reel



- + Open marker sleeve with label pocket for snap-on mounting on cables and wires. Suits PF, PFC and PP+.
- + Simply clip-on for secure, highly legible identification.

TYPE	POCKET WIDTH [mm]	DIAMETER [mm]	AREA [mm <sup>2</sup> ]	AWG	SLEEVE LENGTHS [mm]	LOOSE, CUT SLEEVE IN BAG
PTC10	4.2	2.4 - 3.0	~0.4 - 1.5	~22 - 16	15/21/30	200 pcs
PTC20	4.2	3.0 - 4.0	~1.5 - 3.0	~16 - 12	15/21/30	200 pcs
PTC30	4.2	4.0 - 5.0	~3.0 - 4.0	~12 - 11	15/21/30	200 pcs
PTC40	4.2	5.0 - 6.2	~4.0 - 5.0	~11 - 10	15/21/30	200 pcs
PTC50	4.2	6.2 - 7.2	~5.0 - 6.0	~10 - 7	15/21/30	200 pcs

AWG and mm<sup>2</sup> sizes for guidance only





- **PT+** Transparent sleeve with pocket for marker tag PF, PFC042 and PP+.
- **PT+PFC** Transparent sleeve with pocket for marker tag PFC.
- **PTZ+** Coloured sleeve with transparent pocket for PF, PFC and PP+ profile.
- **PTM** Transparent sleeve with wings for marker tag PFC and PP+ profile.



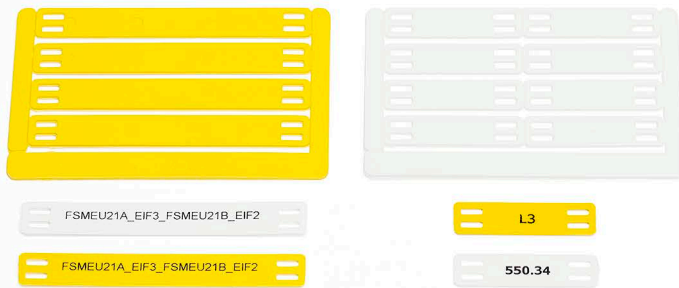
TYPE	DIAMETER [mm]	AREA [mm <sup>2</sup> ]	AWG	SLEEVE LENGTH [mm]	LOOSE, SLEEVES IN BAG	SUITABLE TAGS
<b>PT+ TRANSPARENT SLEEVE WITH TRANSPARENT POCKET</b>						
PT+02	13 - 3.0	~0.25 - 15	~22 - 16	12/15/18/21/30	200 pcs	PF, PP+
PT+10	25 - 5.0	~15 - 4.0	~16 - 11	12/15/18/21/30	200 pcs	PF, PP+
PT+20	4.0 - 10.0	~2.5 - 16.0	~13 - 4	12/15/18/21/30	100 pcs	PF, PP+, PFC
PT+30	8.0 - 16.0	~16.0 - 75.0	~6 - 2/0-3/0	12/15/18/21/30	50 pcs	PF, PP+, PFC
PT+40	14.0 - 22.0	~50.0 - 150.0	~0 - 4/0-5/0	15/21/30	50 pcs	PP+, PFC
<b>PT+PFC 02/10 TRANSPARENT SLEEVE WITH TRANSPARENT POCKET FOR PFC</b>						
PT+PFC02	13 - 3.0	~0.25 - 15	~22 - 16	12/15/18/21/30	200 pcs	PFC
PT+PFC10	25 - 5.0	~15 - 4.0	~16 - 11	12/15/18/21/30	200 pcs	PFC
<b>PTZ+ COLOURED SLEEVE WITH TRANSPARENT POCKET</b>						
PTZ+02	13 - 3.0	~0.25 - 15	~22 - 16	12/15/18/21/30	200 pcs	PF, PTC, POZ
PTZ+10	25 - 5.0	~15 - 4.0	~16 - 11	12/15/18/21/30	200 pcs	PF, PTC, POZ
PTZ+20	4.0 - 10.0	~2.5 - 16.0	~13 - 4	12/15/18/21/30	100 pcs	PF, PTC, POZ
<b>PTM TRANSPARENT SLEEVE WITH WINGS</b>						
PTM10	-	-	-	23/30	500 pcs (in carton box)	PP+, PFC
PTM20	-	-	-	20	500 pcs (in carton box)	PFC

AWG and mm<sup>2</sup> sizes for guidance only

- PF marker tags are made of semi-rigid, halogen free, polyester foil in A4 size.
- Fits PT+, PTZ+, PTC, PM and PS transparent holders.



TYPE	WIDTH [mm]	LENGTH [mm]	NUMBER OF LABELS PER SHEET	NUMBER OF SHEETS PER PACK	DESCRIPTION
PF-10015	4.6	15.0	792	10	Yellow or White
PF-10021	4.6	21.0	594	10	Yellow or White
PF-20018	9.5	17.5	352	10	Yellow or White
PF-07533	7.6 - 7.8	33.0	100	10	White
PFA20018	9.5	17.5	352	10	Yellow or White with adhesive



- + PFC marker tags in halogen free material. Available in white or yellow
- + Printing in card thermal transfer printer; fits PT+, PT+PFC, PTC, PTM and PM.

TYPE	DESCRIPTION	MARKER TAG LENGTH [mm]	MARKER TAG HEIGHT [mm]
PFC042	Marker tag for cable marker	12 / 15 / 18 / 21 / 30	4.2
PFC07533	Marker tag for cable marker	33	7.5
PFC09518	Marker tag for cable or component marking	17.5	9.5
PFC095	Marker tag for cable marker	40 / 80	9.5
PFC07014	Marker tag for component marking	14	7.0
PFC12726	Marker tag for component marking	25.4	12.7
PFC45080	Marker tag for component marking	80	45.0

## PP+ /PPA+ - PROFILE

**PP+**

- + Flat hard marker tag profile for PT+, PTC, PTM and PM etc.
- + Developed for easy printing on site in the ProMark system.

**PPA+**

- + Flat hard profile with adhesive tape for component marking

TYPE	DESCRIPTION	COMPACTA DISC WIDTH [mm]	COMPACTA DISC LENGTH [m]	DN-Reel LENGTH [m]
PP+profil	Flat hard profile	4.6 / 6.3 / 9.0 / 10.2 / 11.0	17	50
PPA+profil	Flat hard profile, adhesive	9.0	10	25

- + PS is a universal system for marking of control panels and components
- + PS is available as pre-printed markers and as production on site
- + 1 module = 17.5 mm



TYPE	DESCRIPTION	MODULE LENGTH	QTY PACK
PS-20*	White marker with black text or transparent modules	1/3 , 1/2 , 1, 1 1/2 , 2 , 3	20/50 pcs <sup>1</sup>

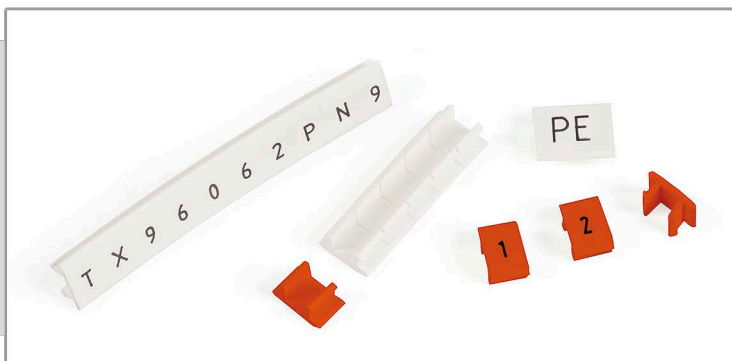
\* = Desired character; ( A, B, C, 1, 2, 3 etc.);      \* = Strips of 12-number sequences, 1-12, 13-24, 25-36, 37-48, 49-60, 61-72, 73-84, 85-96, 97-100;      <sup>1</sup> = 20 Letters or 50 Numbers

TYPE	DESCRIPTION	WHITE	TRANSPARENT	LENGTH [mm]	WIDTH [mm]	QTY PACK
PS-20000	PS profile. Neutral, no text	PS-20000K9	PS-20000KT	1000	12,9	10x1m

TYPE	DESCRIPTION	WHITE	BLACK	LENGTH [mm]	WIDTH [mm]	QTY PACK
PS-20BP	Base profile with adhesive	PS-20BPV	PS-20BPS	1000	11,6	10x1m

TYPE	DESCRIPTION	DIAMETER [mm]	MAX. STÄRKE DER OBERFLÄCHE	STK / PKG
PS-R6	Plastic rivet for fixing base profile rail	3.0	0.5 - 15	100 pcs
PS-R7	Plastic rivet for fixing base profile rail	3.0	15 - 25	100 pcs

- + TX terminal block markers fit most common terminal blocks.
- + TX is available in pre-printed, customized and for production on site



TYPE	TX MARKER LENGTHS [mm]	TX MARKER WIDTH [mm]	TX MARKER HEIGHT [mm]	STRIPS/BAG
TX-96	50 / 52 / 60 / 62 / 73 / 80 / 100 / 102 / 120 / 141 / 151	96	4.0	10 strips
TX-61	51 / 61	61	2.8	10 strips



- + Available both pre-printed and as blank profile for print on site with for example MK10 / MK10-DH.
- + Colours are white and yellow.
- + Easy mounted with a cable tie to fit any size of cable, tube or pipe.

TYPE	LENGTH (mm)	WIDTH (mm)	DN-REEL
PPQ10	40 / 60 / 80	10	20 m
PPQ19	40 / 60 / 80	19	20 m
PPQ38	60 / 80 / 100	38	20 m

## PO/POZ - PROFILE



- + Very fast, one hand mounting onto cable or wire.
- + POZ: Halogen free material.
- + Standard colours are yellow and white. Other colours on request.

TYPE	DIAMETER (mm) [min/max]	AREA (mm²)	AWG	COMPACTA DISC	DN-REEL	REEL PO	BOX	
							PO	POZ
PO/POZ-01	13 / 18	~0.25	~23 - 20	6.0 m	-	250 m	-	250 m
PO/POZ-02	17 / 22	~0.5	~20 - 18	5.0 m	60 m	250 m	-	250 m
PO/POZ-03	20 / 25	~0.75	~18 - 17	4.5 m	50 m	250 m	-	250 m
PO/POZ-04	22 / 28	~1.0	~17 - 15	4.5 m	50 m	200 m	-	200 m
PO/POZ-05	27 / 35	~1.5	~15 - 13	4.0 m	40 m	200 m	-	200 m
PO/POZ-06	32 / 40	~2.5	~13 - 11	3.5 m	40 m	200 m	-	200 m
PO-06Q10*	-	-	-	3.5 m	40 m	-	100 m	-
PO-068TW	68 / 70	-	-	4.5 m	25 m	50 m	-	-
PO-068Q*	-	-	-	-	25 m	50 m	-	-
PO/ POZ-07	38 / 47	~4.0	~11 - 9	3.5 m	30 m	100 m	-	100 m
PO/ POZ-08	46 / 55	~6.0	~9 - 7	-	-	100 m	-	100 m
PO/ POZ-09	56 / 70	~10.0	~7 - 5	-	-	50 m	-	50m
PO/ POZ-10	65 / 80	~16.0	~5 - 3	-	-	50 m	-	50m
PO/ POZ-11	70 / 95	~18.0	~4 - 3	-	-	-	5x10 m	5x10 m
PO/ POZ-12	75 / 100	~20.0	~4 - 2	-	-	-	5x10 m	5x10 m
PO/ POZ-14	95 / 120	~25.0	~1/0	-	-	-	5x10 m	5x10 m
PO/ POZ-16	115 / 140	~35.0	~1/0-2/0	-	-	-	2x5 m	2x5 m
PO/ POZ-18	135 / 160	~50.0	~2/0-3/0	-	-	-	2x5 m	2x5 m
PO/ POZ-20	155 / 180	~70.0	~3/0-4/0	-	-	-	2x5 m	2x5 m
PO/ POZ-22	175 / 200	~95.0	~4/0	-	-	-	2x5 m	2x5 m
PO/ POZ-24	195 / 220	~120.0	~4/0-5/0	-	-	-	2x5 m	2x5 m
PO/ POZ-26	215 / 240	~150.0	~5/0-6/0	-	-	-	2x5 m	2x5 m
PO/ POZ-28	240 / 280	~185.0	~6/0-7/0	-	-	-	2x5 m	2x5 m

\* = Pre-punched profile to be mounted with cable ties

AWG and mm² sizes for guidance only

- + Flexible halogen free heat shrink tubing for marking on site
- + 2:1 shrink ratio
- + Shrink temperature > 90°C
- + Working temperature -30°C to +105°C
- + Standard colour yellow and white. Other colours on request



TYPE	DIAMETER [mm]		DIAMETER INCHES		MINI-BOX	REEL
	BEFORE	SHRINKED	BEFORE	SHRINKED		
PHZ20024	2.4	1.2	3/32	3/64	-	200 m
PHZ20032	3.2	1.6	1/8	1/16	15 m	200 m
PHZ20048	4.8	2.4	3/16	3/32	12 m	200 m
PHZ20064	6.4	3.2	1/4	1/8	12 m	150 m
PHZ20095	9.5	4.7	3/8	3/16	-	150 m
PHZ20127	12.7	6.4	1/2	1/4	-	100 m
PHZ20190	19.1	9.5	3/4	3/8	-	50 m
PHZ20254	25.4	12.7	1	1/2	-	50 m
PHZ20381	38.1	19.1	1 1/2	3/4	-	25 m
PHZ20510	50.8	25.4	2	1	-	25 m

- + Sequence, paginated or same marking characters on reels
- Examples:
- 2 paginated 20 number sequences: 060-079 (060, 060, 061, 61...079, 079)
  - Same number: 27 (27, 27, 27, 27 etc)



TYPE	DIAMETER [mm]	AREA [mm]	AWG	2 CHARACTERS, SLEEVE LENGTH [mm]	3 CHARACTERS, SLEEVE LENGTH [mm]	4 CHARACTERS, SLEEVE LENGTH [mm]
PA-02	13 - 3.0	~0.2 - 1.5	~22 - 16	6	9	12
PA-1	2.5 - 5.0	~1.5 - 4.0	~16 - 11	6	9	12
PA-2	4.0 - 10.0	~2.5 - 16.0	~13 - 5	6	9	12
PC-10	2.4 - 3.0	~0.5 - 1.5	~22 - 16	6	9	12
PC-20	3.0 - 4.0	~1.5 - 3.0	~16 - 12	6	9	12

## COMPARTMENT STORAGE BOX



- + Available in 5 different models; PA1, PA2, PA02, PK2, PKS
- + Transparent lid for perfect overview
- + Easy to refill with Partex standard products

TYPE	DESCRIPTION
PSK55000 - PA1	49 removable compartments containing PA1 markers: A-Z, 0-9, - /, GRD, +, -, Blank, L1, L2, L3, N, Teflon-coated installation tool in stainless steel
PSK55000 - PA2	50 removable compartments containing PA2 markers: A-Z, 0-9, - /, GRD, +, -, Blank, L1, L2, L3, N
PSK55000 - PA02	49 removable compartments containing PA02 markers and installation tools: A-Z, 0-9, - /, GRD, +, -, Blank, L1, L2, L3, N, Teflon-coated installation tool in stainless steel
PSK55000 - PK2	40 removable compartments containing PK2 markers, holders and cable ties: A-Z, 0-9, /, GRD, +, -, POH07 holders, POH12 holders, PKB25100A9 cable ties, PKB25100A0 cable ties
PSK55000 - PKS	40 removable compartments containing PKS markers, holders and cable ties: A-Z, 0-9, /, GRD, +, -, cable ties PKS46150AN16, holders PKS10060FQS, holders PKS10100FQS

## SP/SPZ - SPIRAL TUBING

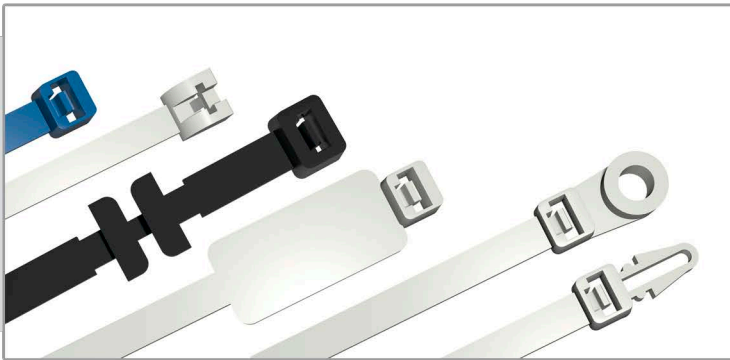


- + Spiral tube for fitting of cables, conductors, tubes, wire bundles etc.
- + Excellent protection against mechanical wear
- + SPZ: Halogen free material.

TYPE	AVAILABLE AS HALOGEN FREE	INTERNAL DIAMETER, MM [mm]	INTERNAL DIAMETER, INCH	BOX / PACK UNIT
SP-08100	No	8	.315	100 x 1m / 1m
SP-10100	Yes	10	.394	60 x 1m / 1m
SP-15100	Yes	15	.590	40 x 1m / 1m
SP-20100	Yes	20	.787	40 x 1m / 1m
SP-25100	Yes	25	.984	30 x 1m / 1m
SP-30100	Yes	30	1.181	20 x 1m / 1m
SP-40100	Yes	40 / 42	1.575 / 1.654	10 x 1m / 1m
SP-50100	No	50	1.968	4 x 1m / 1m

**SPH-1** Snap-into fastener of spiral tube in holed mounting plates 100 pcs in one bag

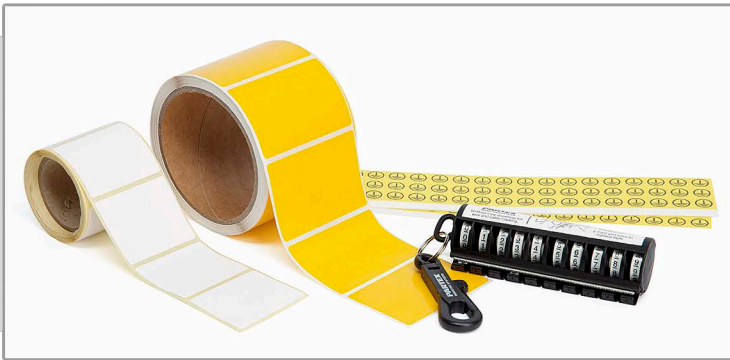
- + Self-locking with high firmness
- + Shaped end for easier insertion through the cable tie head
- + Available for indoor and outdoor installation



TYPE	DESCRIPTION
STAINLESS STEEL	Stainless steel cable ties for tough environments. Available in both uncoated and pure polyester coated 316 grade stainless steel.
STAINLESS STEEL	Cable ties of high quality Nylon 6.6.
UV RESISTANT	Ultra-violet resistant cable ties, specially manufactured with extra carbon added.
METAL DETECTABLE	A blue nylon cable tie with metal content spread throughout the material. Detectable by standard metal detectors. For the e.g. food-, pharmaceutical- and chemical industries.
METAL BARBED	A smooth cable tie with a stainless steel "barbed tooth" providing higher flexibility and higher strength for demanding environments.
ACCESSORIES	Cable fixings, cable tie bases, mounts and tools.

PLS - PARTEX LABEL SYSTEM

- + Labels for cable and component marking
- + Available for indoor and outdoor use
- + Print your own labels with laser- or thermal transfer printer.



TYPE	DESCRIPTION
PLL	Adhesive labels in polyester for laser printer. Colours: Yellow, white, silver.
PLT	Adhesive labels in polyester on roll for thermal transfer printer. Colours: Yellow, white, silver.
PLB	Pre-printed labels with standard symbols, numbers and letters. Colours: Yellow.
PLD	Dispenser with pre-printed labels (rolls). Colours: Yellow, white.



- + Series of high-specification heat shrink, cable marker and panel label system in ladder format.
- + Developed to meet a specific demand; such as fire safety, high temperature, military standards etc.
- + Pre-printed or to be printed on site with a thermal transfer printer.



## CABLE MARKERS

TYPE	DESCRIPTION
CMZ	<b>ZERO HALOGEN</b> Cable marker made of zero halogen, crosslinked UV stabilised polyolefin with low toxicity
CML	<b>EXTENDED FIRE SPECIFICATION</b> Cable marker made of zero halogen, crosslinked UV stabilised polyolefin with low toxicity. London underground approved.
CMT	<b>EXTREME TEMPERATURE</b> High temperature rated, flexible, highly flame retardant, polyvinylidene fluoride printable cable markers. Excellent chemical and mechanical properties.
CMD	<b>DIESEL SPECIFICATION</b> CMD meets printing and fluid resistance standards of SNCF NF F 00-608 type H, SAE-AS5942, as well as MIL-STD-202 Method 215K and SAE-AMS-DTL-23053-6 class 1 standards.
CMM	<b>MILITARY GRADE</b> CMM meets printing and fluid resistance standards of NF F 00-608 type H, SAEAS5942, as well as MIL-STD-202 Method 215K and SAE-AMS-DTL-23053-6 class 1 standards.



## PANEL LABELS

TYPE	DESCRIPTION
EPL	<b>ENHANCED PANEL LABELS</b> Innovative labels specifically designed to replace engraved and plotted plates.
EPF	<b>ENHANCED PANEL LABELS LOW FIRE HAZARD</b> EPF are made of low fire hazard zero halogen, self extinguishing, crosslinked UV stabilised polyolefin with low toxicity. It is mostly used for mass transit and underground applications.



## HEAT SHRINK TUBE

TYPE	DESCRIPTION
SG	<b>STANDARD GRADE</b> Flame retardant UL224 VW-1 Flammability. Self extinguishing. Shrink Ratio 2:1
HF	<b>HALOGEN FREE</b> Low smoke, flame retardant heat shrinkable tubing. Shrink Ratio 2:1
MS	<b>MILITARY SPECIFICATION</b> Very flexible, high temperature rated, highly flame retardant, UL and CSA recognised heat shrinkable tubing. Shrink Ratio 3:1
NF	<b>NF DIESEL SPECIFICATION</b> Diesel resistant sleeve meet the material and physical property requirements of SEA-AMS-DTL-23053-6 Class 1. Shrink Ratio 3:1
ET	<b>EXTREME TEMPERATURE PERFORMANCE</b> High temperature rated, flexible, highly flame retardant, polyvinylidene fluoride printable sleeves. Excellent chemical and mechanical properties with low friction surface. Shrink Ratio 2:1
EF	<b>EXTENDED FIRE SPECIFICATION</b> Flame retardant, zero halogen, low smoke, low toxicity cross linked UV stabilised and printable polyolefin. Meets London Underground Limited Standard 1-085. Shrink Ratio 2:1



- + Provides complete multi character marking for cables, wires, terminal blocks and components.
- + Prints on PA+, PC, PK, POH, PFC, TX, and PS products



## BASIC KIT INCLUDES

- + Plotter MK500
- + Software PMS
- + Printer Cable



## INFORMATION

**Print:**  
Plotter pens with etching ink

**Speed:**  
5 to 40 mm/s

**PC connection:**  
USB or RS232

**Profile types:**  
Pre-cut profiles

- + Cost effective printing solution for Partex marker cards system.
- + Single sided printer for larger production volumes.
- + Prints onto Partex PFC-cards
- + Connected to a PC and controlled by Partex WinSign software .



## PRINTER AND ACCESSORIES

ARTICLE NUMBER	INFORMATION	PACK UNIT (MOQ)
PRIMACY	Primacy card printer, black ribbon and cleaning kit	1 pce
PRIMACY-RB-BK	Black ribbon for PFC cards made of ABS (2000 prints)	1 pce
PRIMACY-RB-BKFLEX	Black ribbon for PFC cards made of Polyamide (1000 prints)	1 pce
PRIMACY-ACLO01	Regular cleaning kit, (5 cards with an adhesive side and 5 cleaning sticks)	1 pce
PRIMACY-ACLO02	Advanced cleaning kit, (2 T-cards, 2 adhesive cleaning cards, 1 pen and 60 wipes)	1 pce

ARTICLE NUMBER	INFORMATION	MARKER TAG/LABEL LENGTH X HEIGHT (INCH)	QTY/CARD	QTY/BOX	MATERIAL	SUITABLE PARTEX HOLDER SYSTEM
PFC04212KA*	Marker tag - wire	12 x 4.2	21	525	ABS	PT+, PTZ+, PTC, PM,PTM
PFC04215KA*	Marker tag - wire	15 x 4.2	21	525	ABS	PT+, PTZ+, PTC, PM,PTM
PFC04218KA*	Marker tag - wire	18 x 4.2	21	525	ABS	PT+, PTZ+, PTC, PM,PTM
PFC04221KA*	Marker tag - wire	21 x 4.2	21	525	ABS	PT+, PTZ+, PTC, PM,PTM
PFC04230KA*	Marker tag - wire	30 x 4.2	14	350	ABS	PT+, PTZ+, PTC, PM,PTM
PFC07533KA*	Marker tag - cable	33 x 7.5	9	225	ABS	PTZ+15/25/35, PM20
PFC09518KA*	Marker tag - component / cable	18 x 9.5	20	500	ABS	PM24, PS20T
PFC09540KA*	Marker tag - cable marking	40 x 9.5	8	200	Polyamide/PA11	Cable tie mounting
PFC09580KA*	Marker tag - cable marking	80 x 9.5	4	100	Polyamide/PA11	Cable tie mounting

\* = card colour (4: yellow, 9: white)



- + Compact, portable and robust printer for cable, wire and component marking on site.
- + Feeds, prints and cuts Partex P0/P0Z, PP+, PPA+, PHZ and PL/PLL.
- + USB connection, controlled by Partex software WinSign.



## INFORMATION

**Print:**

Ribbon, thermal transfer printing

**Speed:**

18,5, 25 or 40 mm/s

**PC connection:**

USB

**Profile types:**

Continuous profiles  
Tape cassettes

- + PROMARK T-1000 Printer
- + Software Winsign
- + Power cable, USB cable, AC adapter
- + Ink ribbon (40 m)



## BASIC KIT INCLUDES

- + Tube attachment
- + Reel stand
- + Soft carrying case
- + P0-05 profile, P0-068TW profile



- + Compact heavy duty printer for high demand production.
- + Feeds, prints and cuts bulk Partex profiles and self-adhesive profiles.
- + USB connection, controlled by Partex software WinSign.
- + Single or dual printer head.



## INFORMATION

**Print:**

Ribbon, thermal transfer printing

**Speed:**

125 mm/s

**PC connection:**

USB

**Profile types:**

Continuous profiles

- + MK10 Printer
- + Software WinSign
- + USB cable



## BASIC KIT INCLUDES

- + Power Cable
- + Ribbon
- + Cutting unit

- + Small table printer for high demand production.
- + Feeds and prints Partex profiles and self-adhesive profiles.
- + USB connection, controlled by Partex software WinSign.

**BASIC KIT INCLUDES**

- + EOS1
- + USB cable
- + Power Cable

**INFORMATION**

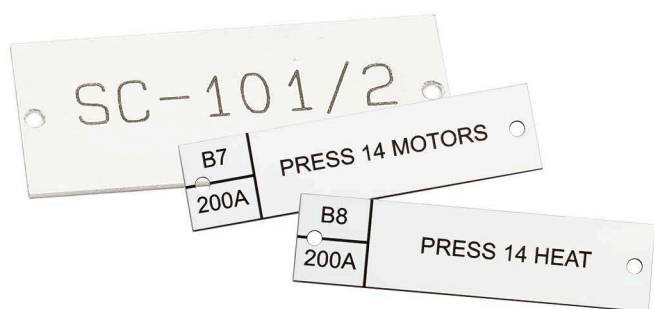
**Print:**  
Ribbon, thermal  
transfer printing

**Speed:**  
125 mm/s

**PC connection:**  
USB

**Profile types:**  
Continuous profiles





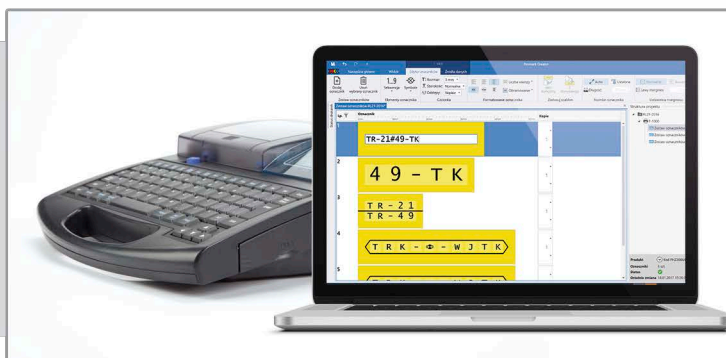
- + Laser engraved signs in plastic, aluminium or stainless steel
- + Available in multiple colors and sizes
- + Self adhesive back for easy mounting

PLASTIC	PLASTIC MIRROR ENGRAVED	ALUMINIUM	STAINLESS STEEL	DIMENSION [cm²]
PE-003P	PE-003PM	-	-	0-30
PE-007P	PE-007PM	-	-	31-70
-	-	PE-008A	PE-008S	80
-	-	PE-012A	PE-012S	120
PE-015P	PE-015PM	-	-	71-150
-	-	PE-016A	PE-016S	160
-	-	PE-024A	PE-024S	240
PE-025P	PE-025PM	-	-	151-250
-	-	PE-032A	PE-032S	320
-	-	PE-036A	PE-036S	360
PE-040P	PE-040PM	PE-040A	PE-040S	251-400
-	-	PE-048A	PE-048S	480
PE-055P	PE-055PM	-	-	401-550
-	-	PE-060A	PE-060S	600
-	-	PE-064A	PE-064S	640
PE-070P	PE-070PM	-	-	551-700
PE-085P	PE-085PM	-	-	701-850
PE-100P	PE-100PM	-	-	851-1000
PE-115P	PE-115PM	-	-	1001-1150
PE-125P	PE-125PM	-	-	1151-1250
PE-135P	PE-135PM	-	-	1251-1350
PE-145P	PE-145PM	-	-	1351-1450
PE-175P	PE-175PM	-	-	1451-1750

Standard sizes - other sizes available on request



- + **NEW QUALITY OF MARKING**
- + Promark Creator is an excellent tool for the design and production management of markers



## INFORMATION

- + An intuitive program that allows you to flawlessly select markers with the proper parameters.
- + It enables the user to design even the most complex and elaborate description;
- + An advanced expression editor for the imported data is provided for this purpose.
- + Indispensable for the designers.
- + Extremely helpful both for users of the PROMARK family of printers and those who prefer to order ready printed and sorted markers direct to site.



## SYSTEM REQUIREMENTS

### Operating system

Windows XP or newer

### CPU

Pentium 2GHz

### RAM

2GB

### Software

.NET Framework 4.0 or newer

### Resolution

recommended 1366x768 or greater



## TYPES

### THE PROGRAM HAS TWO VERSIONS:

- + **DESIGN** - free unlimited time version intended for system designers and for those preparing technical documentation: marking of cables, wires, connectors and electrical components. This version enables the design of even the most complex descriptions. It allows for any configuration of the imported data, it is equipped with an advanced editor; and a variety of formatting features.
- + **DESIGN AND PRINT** - version with all the features of the design, enriched with the ability to print. This version allows to print names on multiple devices and different profiles at the same time, while creating another documents. DESIGN AND PRINT is a licensed version of the Application, which operates thanks to renewable annual subscription.



## ADVANTAGES

- + **MDIW - MARKING DATA IMPORT WIZARD** - Create your own projects by selecting the data important to you, out of the hundreds of parameters within the software. Add your own unique descriptions, symbols or numbers. You can also design the appearance of each marker during the data import. Automatically and easily import data from a variety of sources, including design programs such as SEE Electrical or Eplan
- + **VD - VISUAL DESIGN** - Never again will you have to print a test marker to see what your work will look like. Thanks to the Promark Creator, you can be sure that the markers after printing, will look the same as they do on your computer screen.
- + **DP - DESIGN AND PRINT** - You can print one project, and start building the next one without having to wait for completion of the printout.
- + **MP - MULTI PRINTING** - The program allows you to simultaneously print several projects on multiple devices. This means that you can produce markers for different diameters of cables, or electrical components at the same time, without having to change the media.
- + **VP - VIRTUAL PRINTING** - You do not have a printer? It doesn't matter! Any project that you prepare can be printed directly on the PARTEX production line! The completed markers will be sent to you immediately after printing.
- + **DSS - DESIGN, SAVE AND SEND** - Create projects in one department and print them in another departments or even on site - wherever there is a dedicated printer.

## CUSTOMIZED MULTI-CHARACTER MARKERS



### CLOSED WIRE MARKER

PRODUCT GROUP		DIAMETER [mm]	AREA [mm <sup>2</sup> ]	AWG	SLEEVE LENGTH [min/max]
PVC	ZEREX				
PY-01	-	10 - 20	~0.2 - 0.7	~24 - 19	6 - 39
PA+02	PAZ+02	13 - 30	~0.2 - 1.5	~22 - 16	9-48
PA+05	PAZ+05	20 - 40	~0.5 - 2.5	~18 - 14	9-48
PA+1	PAZ+1	25 - 50	~0.75 - 4.0	~16 - 11	9-48
PA+11	PAZ+11	28 - 55	~1.0 - 6.0	~16 - 10	9-48
PA+2	PAZ+2	40 - 100	~2.5 - 16.0	~13 - 5	9-48
PA-3	PAZ-3	80 - 160	~16.0 - 70.0	~5 -	9-48
PO-01	POZ01	13 / 18	~0.25	~23 - 20	9-48
PO-02	POZ02	17 / 22	~0.5	~20 - 18	9-48
PO-03	POZ03	20 / 25	~0.75	~18 - 17	9-48
PO-04	POZ04	22 / 28	~1.0	~17 - 15	9-48
PO-05	POZ05	27 / 35	~1.5	~15 - 13	9-48
PO-06	POZ06	32 / 40	~2.5	~13 - 11	9-48
PO-07	POZ07	38 / 47	~4.0	~11 - 9	9-48
PO-08	POZ08	46 / 55	~6.0	~9 - 7	9-48
PO-09	POZ09	56 / 70	~10.0	~7 - 5	9-48
PO-10	POZ10	65 / 80	~16.0	~5 - 3	9-48
PO-11	POZ11	70 / 95	~18.0	~4 - 3	9-48
PO-12	POZ12	75 / 100	~20.0	~4 - 2	9-48
PO-14	POZ14	95 / 120	~25.0	~1/0	9-48
PO-16	POZ16	115 / 140	~35.0	~1/0-2/0	9-48
PO-18	POZ18	135 / 160	~50.0	~2/0-3/0	9-48
PO-20	POZ20	155 / 180	~70.0	~3/0-4/0	9-48
PO-22	POZ22	175 / 200	~95.0	~4/0	9-48
PO-24	POZ24	195 / 220	~120.0	~4/0-5/0	9-48
PO-26	POZ26	215 / 240	~150.0	~5/0-6/0	9-48
PO-28	POZ28	240 / 280	~185.0	~6/0-7/0	9-48



### LENGTH & CHARACTERS

MAX NUMBER OF CHARACTERS	SLEEVE LENGTH [mm]
3	9
4	12
5	15
7	18
9	21
11	24
13	27
15	30
17	33
19	36
21	39
24	42
27	45
30	48



### OPEN WIRE MARKER

PRODUCT GROUP		DIAMETER [mm]	AREA [mm <sup>2</sup> ]	AWG	SLEEVE LENGTH [min/max] [mm]
PVC	ZEREX				
PC-10	PCZ10	24 - 30	~10	~22 - 16	9-48
PC-20	PCZ20	30 - 40	~25	~16 - 12	9-48
PC-30	PCZ30	40 - 50	~40	~12 - 11	9-48
PC-40	PCZ40	50 - 62	~60	~11 - 10	9-48
PC-50	-	60 - 72	~100	~7 - 5	9-48



### CABLE MARKER

PRODUCT GROUP		LENGTH [mm]	MAX NO OF CHARACTERS	PUNCHED HOLES
PVC	ZEREX			
PK	PKZ	9-48 (min-max)	3-30	No
PK-20Q18	-	18	7	Both ends
PK-20Q25	PKZ20Q25	25	12	In center
PK-20Q40	PKZ20Q40	40	21	Both ends
PK-20Q60	-	60	42	Both ends
PK-20Q80	-	80	60	Both ends
PK-20Q100	-	100	82	Both ends

TYP	WIDTH [mm]	LENGTH [mm]	MAX NO OF CHARACTERS	PUNCHED HOLES
PPQ+10	10	40 / 60 / 80	6 / 12 / 18	Both ends
PPQ+19	19	40 / 60 / 80	6 / 12 / 18	Both ends
PPQ+38	25,4	60 / 80 / 100	12 / 18 / 25	Both ends



### STAINLESS STEEL MARKER

TYP	WIDTH [mm]	LENGTH [mm]	MAX NO OF CHARACTERS	PUNCHED HOLES
PKS10	10	39 / 50* / 70* / 90* / 110* / 130	5 / 8 / 13 / 18 / 23 / 28	1 in both ends
PKS19	19	50 / 70 / 90 / 110 / 130	8 / 13 / 18 / 23 / 28	1 in both ends
PKS25	25,4	50 / 70 / 90 / 110 / 130	8 / 13 / 18 / 23 / 28	1 in both ends
PKS32	32	50 / 70 / 90 / 110 / 130	8 / 13 / 18 / 23 / 28	2 in both ends
PKS38	38	50 / 70 / 90 / 110 / 130	8 / 13 / 18 / 23 / 28	2 in both ends

\* Available with large slits. Please note less maximum numbers of characters due to large slits.  
AWG and mm2 sizes for guidance only

**SWEDEN**

PARTEX MARKING SYSTEMS AB  
SE - 547 22 Gullspång  
Phone +46 (0) 551 280 00  
Fax +46 (0) 551 280 99  
sales@partex.se  
www.partex.nu

**BRAZIL**

PARTEX MARKING SYSTEMS LTDA  
PARTEX BRASIL IEN1

PARTEX BRASIL SERVICOS E COMERCIO DE  
EQUIPAMENTOS ELETRONICOS LTDA  
AVENIDA DOM LUIS 1200, SALA 2201,  
TORRE 1  
ALDEOTA, FORTALEZA, CEARA, CEP  
60160196

**CZECH REPUBLIC**

PARTEX ARIANE A.S.  
Antala Staska 1859/34  
140 00 Prague 4  
Czech Republic

**DUBAI**

PARTEX MARKING SYSTEMS AB JLT,  
1902 FORTUNE TOWER, CLUSTER-C,  
JUMEIRAH LAKES TOWERS,  
P.O. BOX 18608,  
DUBAI, UAE

**FRANCE**

PARTEX SAS  
ZA la Tuilerie No. 6  
FR - 94440 Marolles en Brie  
Phone : +33 (0) 145 699 063  
Fax : +33 (0) 143 864 526  
partex@partex.fr  
www.partex.fr

**GERMANY**

PARTEX MARKING SYSTEMS GMBH  
Steigstrasse 46  
73101 Aichelberg  
Phone +49 (0) 7164 - 79975 - 10  
Fax +49 (0) 7164 - 79975 - 28  
info@partex.de  
www.partex.de

**INDIA**

PARTEX MARKING SYSTEMS INDIA PVT.LTD  
No. 5, 13th main road, Vasanthnagar  
Bangalore - India - 560 052  
Phone +91 80 49 222 300 / 49 222 301  
Fax +91 80 49 222 309  
sales@partex.in  
www.partex.in

**POLAND**

PARTEX MARKING SYSTEMS SP. Z O. O.  
ul. Malgorzatawo 1C  
PL - 87-162 Lubicz Dolny  
Phone +48 (0) 56 659 08 02  
Fax +48 (0) 56 659 08 27  
office@partex.pl  
www.partex.pl

**RUSSIA**

LLC "PARTEX MARKING SYSTEMS"  
TRANSPORTNAJA, 2  
MOSKOVSKAJA OBLASTY  
G. ODINTSOVO, 143006 Russia

**UNITED KINGDOM**

PARTEX MARKING SYSTEMS (UK) LTD  
61 - 64 Station Road  
Coleshill  
UK - Birmingham B46 1JT  
Phone +44 (0) 1675 463670  
Fax +44 (0) 1675 463520  
sales@partex.co.uk  
www.partex.co.uk

**SOUTH AFRICA**

PARTEX MARKING SYSTEMS SA LTD  
P.O BOX 1569  
KLOOF  
3640  
KWA-ZULU NATAL  
SOUTH AFRICA

**USA**

PARTEX MARKING SYSTEMS INC.  
770 North Church Road, Suite A  
Elmhurst, IL, 60126, USA  
Phone +1 630 516 0400  
Fax +1 630 833 7631  
sales@partexmarker.com  
www.partexmarker.com





PARTEX MARKING SYSTEMS AB



**APS Industrial**  
apsindustrial.com.au  
1300 309 303