



## Understanding AS/NZS 61439 and partnering with compliant solution providers

Working alongside our market leading global manufacturing partners including Siemens and Rittal, APS Industrial are proud to support local industry with a suite of AS/NZS 61439 compliant solutions.

NATIONAL DISTRIBUTORS OF

**SIEMENS**



[apsindustrial.com.au/AS-NZ-61439](https://apsindustrial.com.au/AS-NZ-61439)

# Understanding AS/NZS 61439 and partnering with compliant solution providers

From May, 2021, all low-voltage switchgear and control gear assemblies Australia and New Zealand are required to comply with AS/NZS 61439 (the new standard which supersedes AS/NZS 3439). This standard outlines the design verification for control gear assemblies and the responsibilities of the manufacturer and switchboard manufacturer.

While this new standard details a wide range of requirements, the safety of persons and equipment, electrical availability, long-term reliability, and conformity are the core essential values. Such requirements include uniform compliance across all aspects of manufacture and assembly - checking interactions and consistency between switchgear and equipment, providing protection against electrical, mechanical, and structural hazards, and simplifying system maintenance and upgrading cycles.



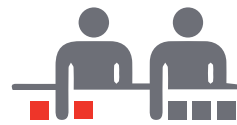
## AREAS OF RESPONSIBILITY

The standard divides responsibility for the manufacturing of a low voltage switchgear and control gear assembly between the original manufacturer and the assembly manufacturer.



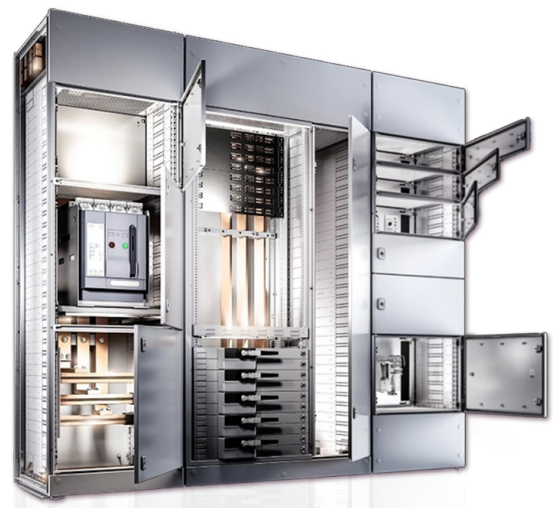
### ORIGINAL MANUFACTURER

The original manufacturer is the organisation that originally developed the switchgear system and they are responsible for the Design Verifications.



### ASSEMBLY MANUFACTURER

The Switchboard Builder (or Assembly Manufacturer) is the organisation responsible for the completed assembly – and they are responsible for the Routine Verifications. Routine Verification is the verification process to which each assembly must be subjected to during and after manufacture, to ensure that they conform with the requirements of the relevant assembly standard. Complete documentation contains the test report with the data and calculations utilised and comparisons carried out.



# APS Industrial AS/NZS 61439 Compliant Solutions

Working alongside our market leading global manufacturing partners including Siemens and Rittal, each of whom participate on the IEC Committee and are deeply involved with IEC 61439, APS Industrial are proud to draw on this experience and support local industry with a suite of AS/NZS 61439 compliant solutions.

## **SIEMENS** Siemens SIVACON

With a Siemens SIVACON S8 low-voltage power distribution board, customers are always on the safe side. Siemens SIVACON switchboards are developed, manufactured, and tested in accordance with the specifications of AS/NZS 61439 - 2 for power switchgear and control gear assemblies. The combination of SIVACON S8 low-voltage switchboards and SIVACON 8PS busbar trunking systems is also consistently design verified in accordance with AS/NZS 61439.

## **RITTAL** Rittal Ri4Power

Rittal RI4Power is the a globally recognised tried-and-tested, highly flexible power distribution system for individual requirements - from small power distribution applications and customised switchgear and control systems right through to high-current power distribution for infrastructure and industrial applications. Fully type tested as per AS/NZS 61439 -1&2, Rittal's Ri4Power is a modular power management system that utilises the flexibility of Rittal's TS8 modular enclosure platform to create compartment based load isolation from low-voltage switchgear components.

## **aps DB** APS DBs

APS Industrial are proud to offer 'DB' distribution boards that are custom designed for the demands of Australian industry and feature world-class technology and innovation. We have fully tested to the new standard and have a compliant offering to satisfy your local applications. Our DBs are competitively priced, exclusive to APS Industrial and purpose-built for compatibility with Siemens circuit breakers.

Featuring **SIEMENS** **RITTAL** **Weidmüller** **Æ** **KATKO** **BELDEN**

If you would like to know more about APS Industrial's suite of AS/NZS 61439 compliant power distribution system solutions, please contact your local Sales Representative or call 1300 309 303.

[apsindustrial.com.au/AS-NZ-61439](http://apsindustrial.com.au/AS-NZ-61439)





## OUR LOCATIONS

### National footprint with strategic local stockholdings.

APS Industrial is headquartered in Melbourne and in addition has a national network of offices in Adelaide, Perth, Sydney, Brisbane and Tasmania supported by strategic local stockholdings and expert technical and application knowledge.

[apsindustrial.com.au](http://apsindustrial.com.au)

### CONNECT WITH US



#### MELBOURNE

5-7 Corporate Ave,  
Rowville, Melbourne VIC 3178

Ph: (03) 8514 3500  
Sales: 1300 309 303  
Email: [vic@apsindustrial.com.au](mailto:vic@apsindustrial.com.au)

#### SYDNEY

Unit P1, 10-16 South Street  
Rydalmere, Sydney NSW 2116

Ph: (02) 8898 6200  
Sales: 1300 309 303  
Email: [nsw@apsindustrial.com.au](mailto:nsw@apsindustrial.com.au)

#### BRISBANE

49 Borthwick Avenue,  
Murarrie, Brisbane, QLD, 4172

Ph: (07) 3063 3100  
Sales: 1300 309 303  
Email: [qld@apsindustrial.com.au](mailto:qld@apsindustrial.com.au)

#### ADELAIDE

13-15 Shepley Avenue  
Panorama, Adelaide SA 5041

Ph: (08) 8111 5100  
Sales: 1300 309 303  
Email: [sa@apsindustrial.com.au](mailto:sa@apsindustrial.com.au)

#### PERTH

5 Glyde Court, Malaga,  
Malaga, Perth WA 6090

Ph: (08) 6118 5300  
Sales: 1300 309 303  
Email: [wa@apsindustrial.com.au](mailto:wa@apsindustrial.com.au)

#### TASMANIAN DISTRIBUTION PARTNER

Bamford Engineering Products  
Launceston- 32 Gleadow Street,  
Invermay, TAS, 7248

Devonport - Unit 1, 18 Ferguson Drive,  
Quoiba, TAS, 7310

Hobart - 441A Macquarie Street,  
South Hobart, TAS, 7004

Ph: (03) 6336 9666  
Email: [sales@hmbeng.com.au](mailto:sales@hmbeng.com.au)