



Baumer

SENSORS, ENCODERS  
& MEASURING INSTRUMENTS





## CONTENTS

	<b>INDUCTIVE PROXIMITY SENSORS</b>	<b>4</b>
	Standard Proximity Sensor (Flush Mount)	
	Standard Proximity Sensor (Non-Flush Mount)	
	Proximity Sensor Cables	
	<b>PROXIMITY MOUNTING BRACKETS</b>	<b>5</b>
	Sensofix Range	
	Standard Range	
	<b>PHOTOELECTRIC SENSORS</b>	<b>6</b>
	O300Y	
	Sensor Cables	
	Sensor Accessories	
	<b>M18 PHOTOELECTRIC SENSORS</b>	<b>7</b>
	OR18 (Plastic)	
	OR18 (Brass nickel plated)	
	Sensor Cables	
	<b>M18 PHOTOELECTRIC SENSOR ACCESSORIES</b>	<b>8</b>
	Brackets	
	Reflectors	
	<b>O500 PHOTOELECTRIC SENSORS</b>	<b>9</b>
	O500	
	Sensor Cables	
	<b>O500 SENSOR ACCESSORIES</b>	<b>10</b>
	Brackets	
	Reflectors	
	<b>ULTRASONIC SENSORS</b>	<b>11</b>
	UR18 Series	
	U500 Series	
	Ultrasonic Distance Sensor	
	<b>SENSOR CABLES</b>	<b>11</b>
	<b>ULTRASONIC ACCESSORIES</b>	<b>12</b>
	Sensor Accessories Brackets	
	<b>BAUMER PRODUCT OVERVIEW</b>	<b>13</b>
	<b>BAUMER PRODUCT OVERVIEW</b>	<b>14</b>

While all care is taken, we cannot guarantee that all of the information in this publication is up to date and accurate.  
Specifications may change without notice.

It is up to the customer to determine the suitability of a product for an application.  
APS Industrial assumes no responsibility for the use of the information in this publication.

# INDUCTIVE PROXIMITY SENSORS

## Standard Proximity Sensor (Flush Mount)

- | Flush Mount / Shielded with Connector
- | PNP N/O
- | IP67



SIZE (MM)	MOUNTING TYPE	SENSING DISTANCE SN	SENSOR LENGTH	MATERIAL	CONNECTION	CODE	PART NUMBER
M8	Flush	2mm	36mm	Stainless steel	M8 3Pin	11084731	IGYX 08P17B3/S35L
M12	Flush	4mm	50mm	Brass nickel plated	M12 4Pin	11084740	IGYX 12P17B3/S14L
M18	Flush	8mm	60mm	Brass nickel plated	M12 4Pin	11078862	IGYX 18P17B3/S14L
M30	Flush	15mm	60mm	Brass nickel plated	M12 4Pin	11080998	IGYX 30P17B3/S14L

## Standard Proximity Sensor (Non-Flush Mount)

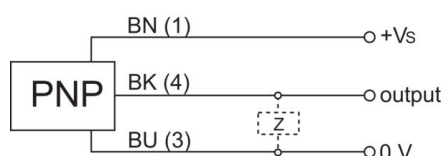
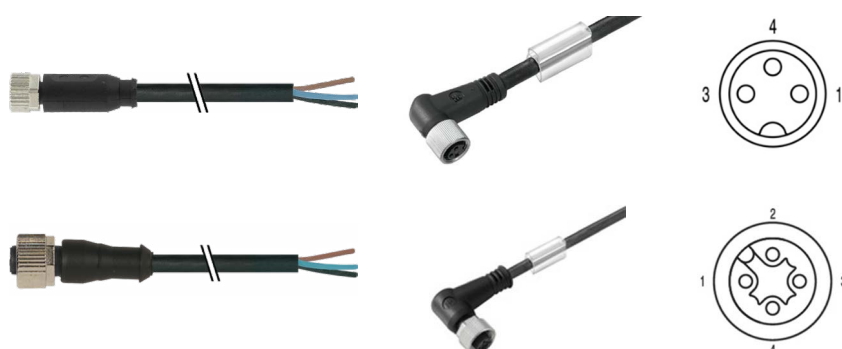
- | Non-Flush Mount / Un-Shielded with Connector
- | PNP N/O
- | IP67



SIZE (MM)	MOUNTING TYPE	SENSING DISTANCE SN	SENSOR LENGTH	MATERIAL	CONNECTION	CODE	PART NUMBER
M8	Non-Flush	6mm	46mm	Stainless steel	M8 3Pin	11148770	IR08.P06S-N46.PO1Z.7SL
M12	Non-Flush	10mm	60mm	Brass nickel plated	M12 4Pin	11148572	IR12.P10S-N60.PO1Z.7BO
M18	Non-Flush	15mm	60mm	Brass nickel plated	M12 4Pin	11149133	IR18.P15S-N60.PO1Z.7BO
M30	Non-Flush	24mm	60mm	Brass nickel plated	M12 4Pin	11174035	IR30.P24S-N60.PV1Z.7BO

## Proximity Sensor Cables

DESCRIPTION	CODE	PART NUMBER
M8 Female A-coded 3-pole PUR 5m open end cable straight	11230324	CAM8.A3-11230324
M8 Female A-coded 3-pole PUR 5m open end cable Right Angle	9457380500	SAIL-M8BW-3-5.0U
M12, Female, A-coded, 4-poles; PUR, 5m, open end cable Straight	11230335	CAM12.A4-11230335
M12, Female, A-coded, 4-poles; PUR, 5m, open end cable Right Angle	9457740500	SAIL-M12BW-4-5.0U



## PROXIMITY MOUNTING BRACKETS

DESCRIPTION	CODE	PART NUMBER
M8 Sensofix round Universal mounting kit	10151719	Sensofix Serie 08 RD
M12 Sensofix round Universal mounting kit	10151720	Sensofix Serie 12 RD
M18 Sensofix round Universal mounting kit	10151658	Sensofix Serie 18 RD
M18 Mounting Bracket R/A Short Galvanised Steel	11171584	ZADAP-M18.SHORT
M18 Mounting Bracket R/A Long Galvanised Steel	11172095	ZADAP-M18.LONG
M18 Mounting Bracket Flat Standard Galvanised Steel	11172096	ZADAP-M18.STANDARD
M18 Mounting Bracket Plastic Swivel	11172110	ZADAP-M18.SWING
M30 Sensofix round Universal mounting kit	11200030	Sensofix Serie 30
M30 Mounting bracket (L design) S/steel	11199999	ZADAP-M30.LONG

### Sensofix Range



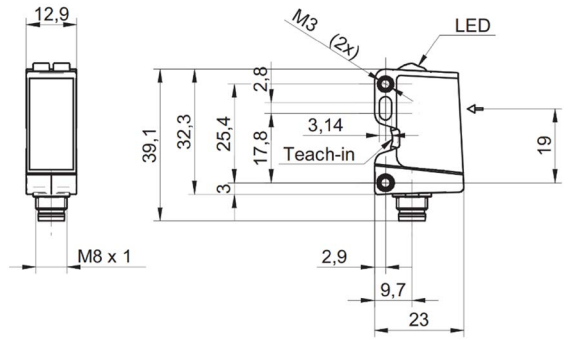
### Standard Range



# PHOTOELECTRIC SENSORS

## O300Y

- | M8 4pin Connector
- | IP67
- | Plastic (ASA, PMMA)
- | 10 ... 30 VDC
- | QTeach
- | PNP NO/NC Output



SENSOR TYPE	LIGHT SOURCE	SENSING RANGE	CODE	PART NUMBER
Diffuse background suppression	pulsed red LED	15 ... 300 mm	11175118	O300Y.GR-PV1T.72N/H006_T003
Diffuse background suppression	pulsed PinPoint LED	15 ... 200 mm	11175148	O300Y.GP-PV1T.72N/H006
Intensity difference	pulsed red LED	10 ... 400 mm	11175127	O300Y.ZR-PV1T.72N/H006_T003
Retro-reflective sensor	pulsed red LED	3,5 m	11175122	O300Y.QR-PV1Z.72N/H006
Through Beam Emitter	pulsed red LED	15m	11175149	O300Y.TR-ZZZZ.72N/H006 (emitter)
Through Beam Receiver	N/A	15m	11175161	O300Y.ER-PV1T.72N/H006 (receiver)

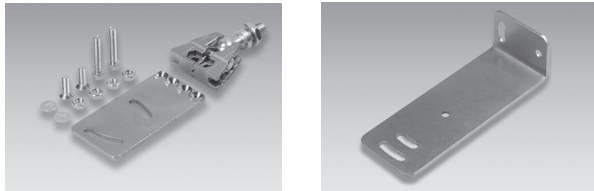
## Sensor Cables

DESCRIPTION	CODE	PART NUMBER
M8 Female A-coded 4-poles PUR 5m open end cable : IP65, IP66K, IP67	11232540	CAM8.A4-11232540
M8 Female A-coded 4-pole PUR 5m open end cable Right Angle	9456150500	SAIL-M8BW-4-5.0U

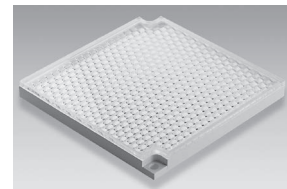
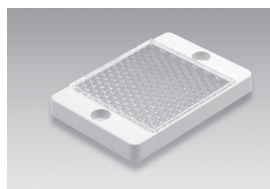
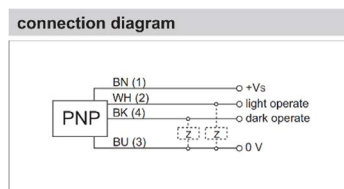
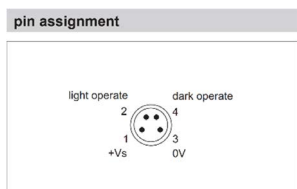


## Sensor Accessories

DESCRIPTION	CODE
Sensofix O300 MTG Bracket Universal	11104963
O300 Mounting Bracket Right Angle	11102423



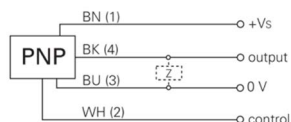
DESCRIPTION	CODE	PART NUMBER
Reflector rectangular 75 x 54 mm	10145961	FTDR 047A048
Reflector rectangular 84 x 84 mm	11101254	FTDR 084A084



# M18 PHOTOELECTRIC SENSORS

## OR18 (Plastic)

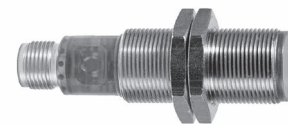
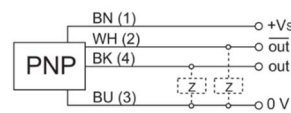
- | Plastic (ABS / PMMA)
- | M12 4pin Connector
- | IP67
- | 12 ... 30 VDC
- | PNP NO/NC Output



SENSOR TYPE	LIGHT SOURCE	SENSING RANGE	CODE	PART NUMBER
Diffuse background suppression	pulsed red LED	40 ... 120 mm	11157841	OR18.GR-PW1P.71O
Diffuse with intensity difference	pulsed infrared diode	< 800 mm	11157800	OR18.ZI-PW1P.71O/B005
Retro-reflective sensor	pulsed red LED	3,5m	11157680	OR18.RR-PW1P.71O
Retro-Reflective Transparent	Pulsed red LED	800mm	11157788	OR18.RR.T-PW1P.71O
Through beam sensor Emitter	pulsed infrared diode	13 m	11157821	OR18.TI-ZZZP.71O
Through beam sensor Receiver	N/A	13m	11157811	OR18.EI-PW1P.71O

## OR18 (Brass nickel plated)

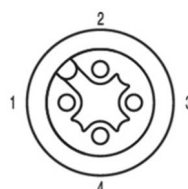
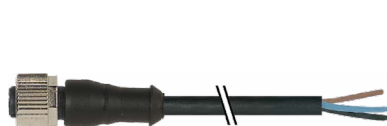
- | Brass nickel plated
- | M12 4pin Connector
- | IP67
- | 12 ... 30 VDC
- | PNP NO/NC Output



SENSOR TYPE	LIGHT SOURCE	SENSING RANGE	CODE	PART NUMBER
Diffuse background suppression	pulsed PinPoint LED	45 ... 200 mm	11129323	OR18.GP-PV1T.7BO

## Sensor Cables

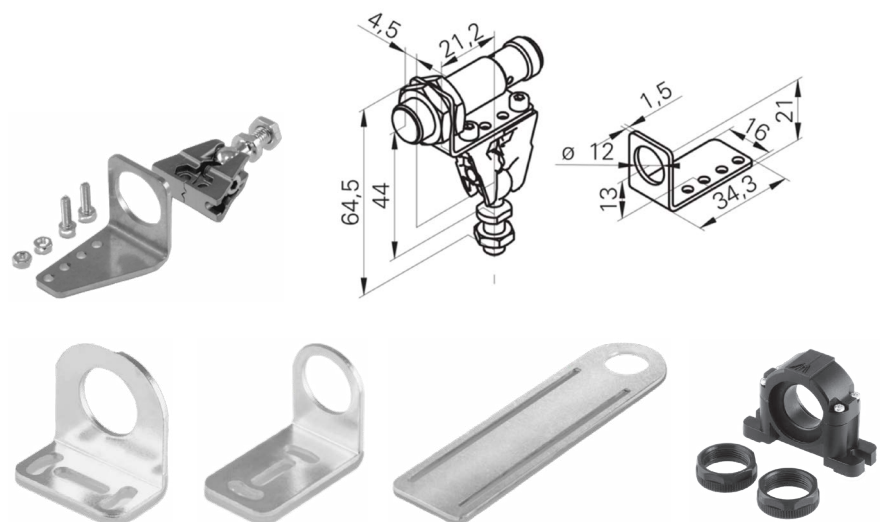
DESCRIPTION	CODE	PART NUMBER
M12, Female, A-coded, 4-poles; PUR, 5m, open end cable Straight	11230335	CAM12.A4-11230335
M12, Female, A-coded, 4-poles; PUR, 5m, open end cable Right Angle	9457740500	SAIL-M12BW-4-5.0U



# M18 PHOTOELECTRIC SENSOR ACCESSORIES

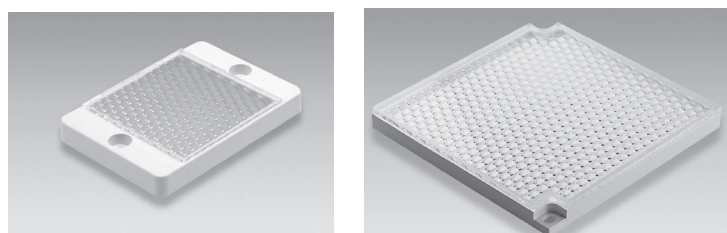
## Brackets

DESCRIPTION	CODE	PART NUMBER
M18 Sensofix round Universal mounting kit	10151658	Sensofix Serie 18 RD
M18 Mounting Bracket R/A Short Galvanised Steel	11171584	ZADAP-M18.SHORT
M18 Mounting Bracket R/A Long Galvanised Steel	11172095	ZADAP-M18.LONG
M18 Mounting Bracket Flat Standard Galvanised Steel	11172096	ZADAP-M18.STANDARD
M18 Mounting Bracket Plastic Swivel	11172110	ZADAP-M18.SWING



## Reflectors

DESCRIPTION	CODE	PART NUMBER
Reflector rectangular 75 x 54 mm	10145961	FTDR 047A048
Reflector rectangular 84 x 84 mm	11101254	FTDR 084A084

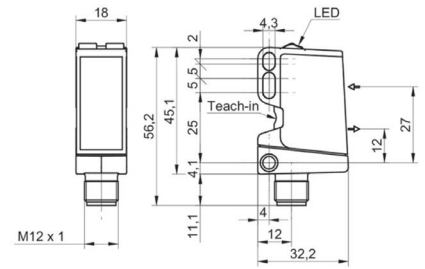




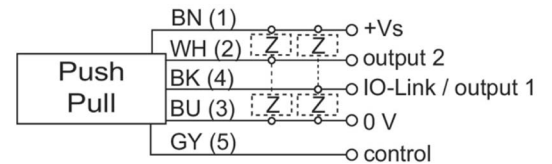
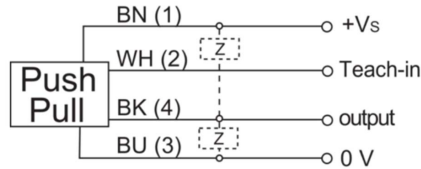
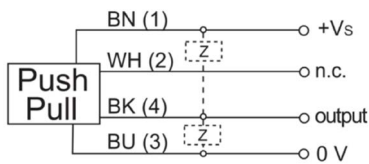
# O500 PHOTOELECTRIC SENSORS

## O500

- | M12, 4pin and 5pin Connectors
- | IP67
- | Plastic (ASA, PMMA)
- | 10 ... 30 VDC
- | QTeach
- | Push Pull NO/NC
- | IO Link, Analogue out (Distance Sensor)

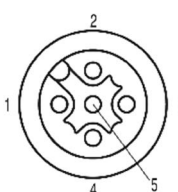
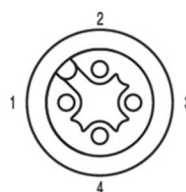
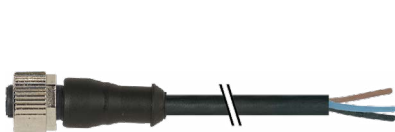


SENSOR TYPE	LIGHT SOURCE	SENSING RANGE	CODE	PART NUMBER	M12
Diffuse with intensity difference	Red LED	20~600mm	11128018	O500.ZR-GW1T.72O	4Pin
Diffuse with background suppression	Red LED	30~600mm	11096062	O500.GR-GW1T.72O	4Pin
Through beam sensor Receiver	NA	~40m	11128072	O500.ER-GW1B.72O	4Pin
Through beam sensor Emitter	Red LED	~40m	11128041	O500.TR-ZZZZ.72O	4Pin
Retro-reflective sensors	Red LED	~8m	11096091	O500.RR-GD1Z.72O	4Pin
Retro-Reflective Transparent	PinPoint LED	~6m	11157351	O500.RPT-GW1J.72O	4Pin
SmartReflect Transparent	PinPoint LED	60~1000mm	11136921	O500.SPT-GW1J.72O/B005	4Pin
ToF with background suppression	Laser	100~2625mm	11235685	OT500.GL-GLGLJ.72F	5Pin
ToF Distance Measurement	Laser	150~2500mm	11240053	OT500.DL-GLIAJ.72F	5Pin



## Sensor Cables

DESCRIPTION	CODE	PART NUMBER
M12, Female, A-coded, 4-poles; PUR, 5m, open end cable Straight	11230335	CAM12.A4-11230335
M12, Female, A-coded, 4-poles; PUR, 5m, open end cable Right Angle	9457740500	SAIL-M12BW-4-5.0U
M12, female, A-coded, 5-poles; PUR, 5m, open end cable Straight	11230338	CAM12.A5-11230338
M12, female, A-coded, 5-poles; PUR, 5m, open end cable Right Angle	9457690500	SAIL-M12BW-5-5.0U

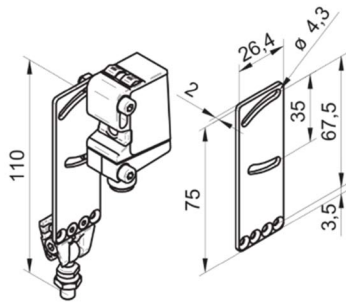
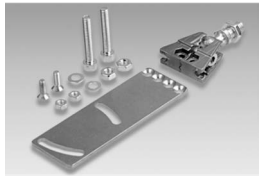




## O500 SENSOR ACCESSORIES

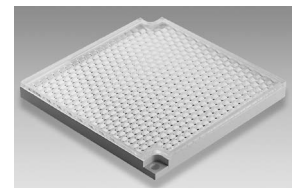
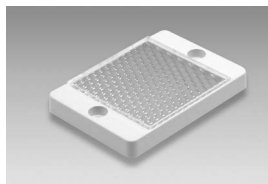
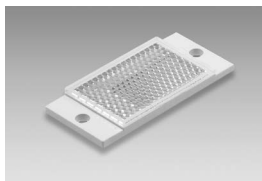
### Brackets

DESCRIPTION	CODE	PART NUMBER
O500/U500 Sensofix Universal mounting kit	11099942	Sensofix O500 / U500
O500/U500 (L design) Mounting bracket	11092246	Mounting bracket O500 / U500



### Reflectors

DESCRIPTION	CODE	PART NUMBER
Reflector rectangular 32 x 20 mm	11229662	FTDR 020U020
Reflector rectangular 43 x 20,3 mm Ultrafine micro	10145962	FTDR 017A027
Reflector rectangular 75 x 54 mm	10145961	FTDR 047A048
Reflector rectangular 60 x 51 mm Ultrafine micro	11229661	FTDR 048U048
Reflector rectangular 84 x 84 mm	11101254	FTDR 084A084



## ULTRASONIC SENSORS

### UR18 Series

- | IO Link
- | QTeach / Line Teach
- | Beam forming
- | M12 5pin, 12 ... 30 VDC
- | Stainless steel (V2A) / TR90
- | IP67/IP69



SENSOR TYPE	SENSING RANGE	CODE	PART NUMBER
Ultrasonic 2 point proximity switch Push Pull / IO Link	20~1000mm	11200645	UR18.PA0.2-GP2J.9SF
Ultrasonic Retro Reflective Sensor Push Pull / IO Link	0~1000mm	11200646	UR18.RA0.2-GP1J.9SF
Ultrasonic Distance Sensor 4-20mA / IO Link	20~1000mm	11200640	UR18.DA0.2-IAMJ.9SF

### U500 Series

- | IO Link
- | QTeach / Line Teach
- | Housing Plastic (ASA, PMMA)
- | M12 5pin
- | 12 ... 30 VDC
- | IP67
- | Beam forming



SENSOR TYPE	SENSING RANGE	CODE	PART NUMBER
Ultrasonic 2 point proximity switch Push-pull / IO Link	20~1000mm	11200633	U500.PA0.2-GP2J.72F
Ultrasonic Retro Reflective Sensor Push Pull / IO Link	0~1000mm	11200634	U500.RA0.2-GP1J.72F
Ultrasonic Distance Sensor 4-20 mA / IO Link	20~1000mm	11200625	U500.DA0.2-IAMJ.72F

### Ultrasonic Distance Sensor

- | Teach in
- | Current Output 4-20mA / 20-4mA
- | Brass nickel plated
- | M12 4pin
- | 15 ... 30 VDC
- | IP67



SENSOR TYPE	SENSING RANGE	CODE	PART NUMBER
Ultrasonic distance measuring sensor 4-20mA	600-6000mm	11099364	UNAM 70I6131/S14

## SENSOR CABLES

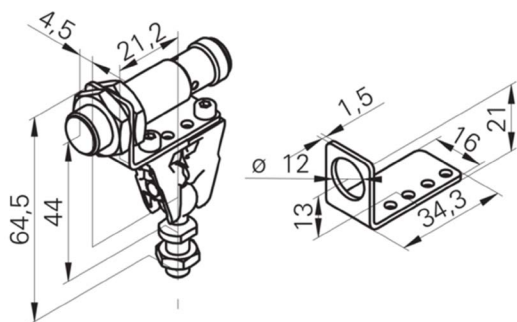
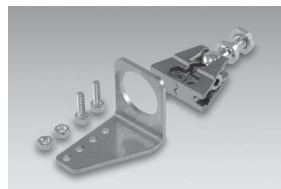
DESCRIPTION	CODE	PART NUMBER
M12, Female, A-coded, 4-poles; PUR, 5m, open end cable Straight	11230335	CAM12.A4-11230335
M12, Female, A-coded, 4-poles; PUR, 5m, open end cable Right Angle	9457740500	SAIL-M12BW-4-5.0U
M12, female, A-coded, 5-poles; PUR, 5m, open end cable Straight	11230338	CAM12.A5-11230338
M12, female, A-coded, 5-poles; PUR, 5m, open end cable Right Angle	9457690500	SAIL-M12BW-5-5.0U



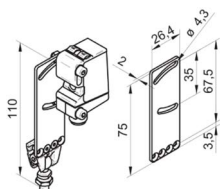
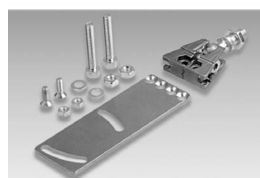
# ULTRASONIC ACCESSORIES

## Sensor Accessories Brackets

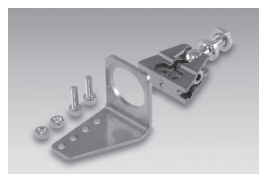
DESCRIPTION	CODE	PART NUMBER
M18 Sensofix round Universal mounting kit	10151658	Sensofix Serie 18 RD
M18 Mounting Bracket R/A Short Galvanised Steel	11171584	ZADAP-M18.SHORT
M18 Mounting Bracket R/A Long Galvanised Steel	11172095	ZADAP-M18.LONG
M18 Mounting Bracket Flat Standard Galvanised Steel	11172096	ZADAP-M18.STANDARD
M18 Mounting Bracket Plastic Swivel	11172110	ZADAP-M18.SWING



DESCRIPTION	CODE	PART NUMBER
O500/U500 Sensofix Universal mounting kit	11099942	Sensofix O500 / U500
O500/U500 (L design) Mounting bracket	11092246	Mounting bracket O500 / U500



DESCRIPTION	CODE	PART NUMBER
M30 Sensofix round Universal mounting kit	11200030	Sensofix Serie 30
M30 Mounting bracket (L design) S/Steel AISI 1.4301	11199999	ZADAP-M30.LONG





## OUR LOCATIONS

### National footprint with strategic local stockholdings.

APS Industrial is headquartered in Melbourne and in addition has a national network of offices in Adelaide, Perth, Sydney, Brisbane and Tasmania supported by strategic local stockholdings and expert technical and application knowledge.

[apsindustrial.com.au](https://apsindustrial.com.au)

### CONNECT WITH US



#### MELBOURNE

5-7 Corporate Ave,  
Rowville, Melbourne VIC 3178  
Ph: (03) 8514 3500  
Sales: 1300 309 303  
Email: vic@apsindustrial.com.au

#### SYDNEY

391 Park Rd, Block P,  
Regents Park, NSW, 2143  
Ph: (02) 8898 6200  
Sales: 1300 309 303  
Email: nsw@apsindustrial.com.au

#### BRISBANE

49 Borthwick Avenue,  
Murarrie, Brisbane, QLD, 4172  
Ph: (07) 3063 3100  
Sales: 1300 309 303  
Email: qld@apsindustrial.com.au

#### ADELAIDE

159-163 Caulfield Ave,  
Clarence Gardens, SA 5039  
Ph: (08) 8111 5100  
Sales: 1300 309 303  
Email: sa@apsindustrial.com.au

#### PERTH

5 Glyde Court, Malaga,  
Malaga, Perth WA 6090  
Ph: (08) 6118 5300  
Sales: 1300 309 303  
Email: wa@apsindustrial.com.au

#### HOBART

441A Macquarie Street,  
South Hobart, TAS, 7004  
Sales: 1300 309 303  
Email: tas@apsindustrial.com.au