

A large, industrial-grade metal enclosure is shown on the left side of the page. The enclosure is partially open, revealing internal components like a fan and wiring. The entire image is overlaid with a semi-transparent red filter. The enclosure has a heavy-duty door with a handle and locking mechanism.

RITTAL INDUSTRIAL ENCLOSURE SOLUTIONS

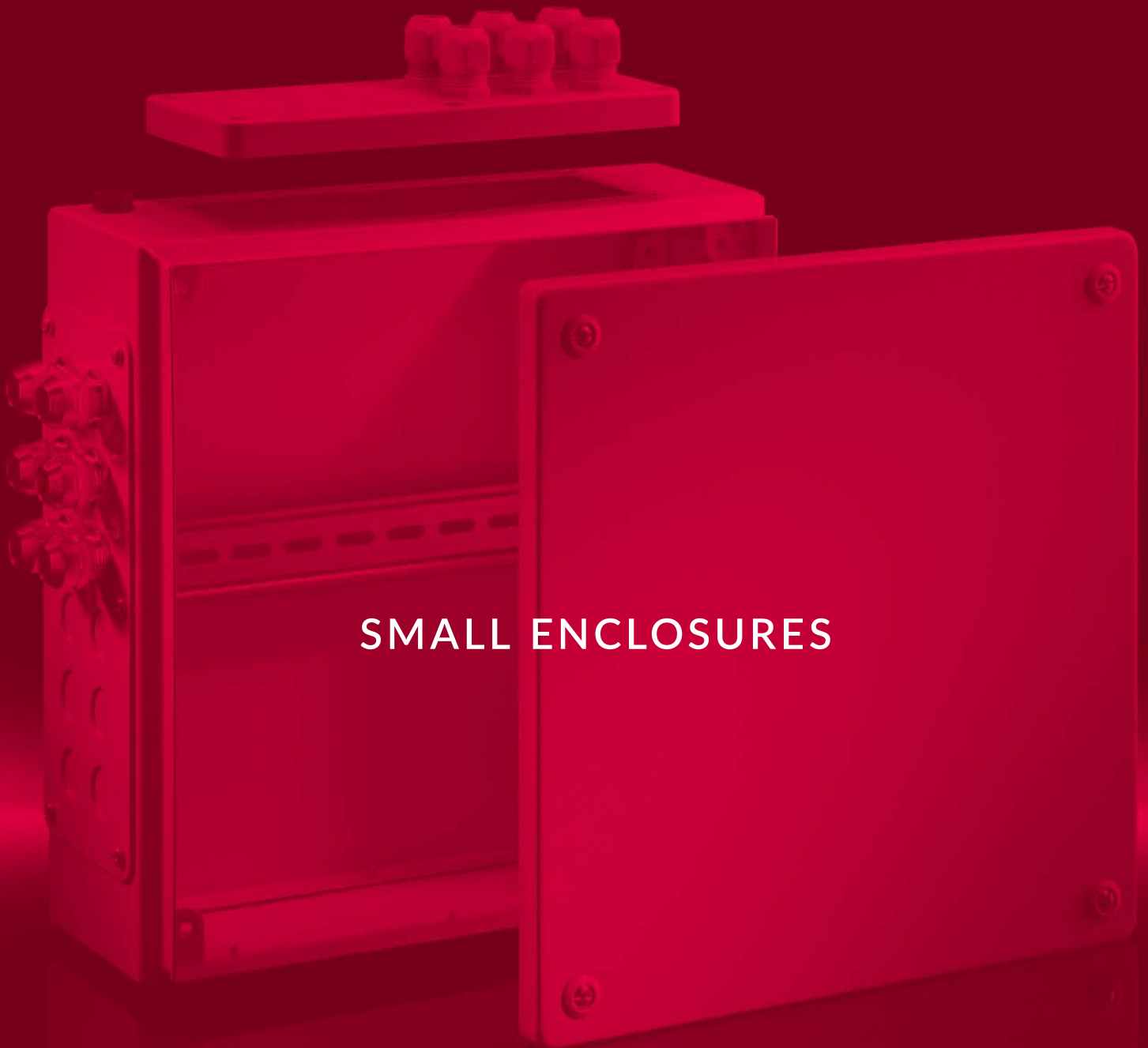


CONTENTS

SMALL ENCLOSURES	1/3	OUTDOOR ENCLOSURES	6/44
Terminal / Junction Box KL	1/4	Wall Mounted Enclosures CS	6/45
Switch Housings Stainless Steel	1/5	Basic Enclosures CS	6/46
Terminal / Junction Box KX / KL Stainless Steel	1/6	Toptec CS	6/47
E-Box Enclosures EB	1/7	Toptec Bayable CS	6/48
Bus Enclosures KX	1/8	CLIMATE CONTROL	7/49
Other Small Enclosures	1/9	Blue e+ Fan and Filter Units	7/50
COMPACT ENCLOSURES	2/10	Blue e+ EC Fan and Filter Units	7/51
Compact Enclosures AE	2/11	Blue e+ EMC Fan and Filter Units	7/52
Compact Enclosures AX	2/13	TopTherm Fan and Filter Units	7/53
Compact Enclosures AE Stainless Steel (304L)	2/14	Roof Mounted Filter Fans	7/54
Compact Enclosures AE Stainless Steel (316L)	2/15	Wall Mounted Cooling Units	7/55
Sloped Roof Enclosures AE Stainless Steel (316L)	2/16	Wall Mounted Cooling Units Blue E+	7/56
RiMine Sloped Roof Mining Enclosures Stainless Steel (316L)	2/17	Wall Mounted Cooling Units Blue E+ S	7/57
APS Rittal Distribution BOARD Enclosures	2/18	Wall Mounted Cooling Units Blue E+ Outdoor	7/58
Fibreglass Enclosures AX	2/19	Toptherm Wall-Mounted Cooling Unit Blue E	7/59
Ex Enclosures	2/20	Wall Mounted Cooling Units NEMA 4X	7/60
ENCLOSURE SYSTEMS	3/21	Roof Mounted Cooling Units	7/61
VX SE Free-Standing Enclosure System	3/22	Toptherm Air/Air Heat Exchangers	7/62
VX SE Stainless Steel 304 Free-Standing Enclosure System	3/23	Air/Water Heat Exchangers	7/63
VX SE Free-Standing Enclosure System IP 66/NEMA 4	3/24	Chiller Blue E+	7/64
VX SE Stainless Steel 304 Enclosure System IP 66/NEMA 4X	3/25	Enclosure Heaters	7/65
Base/plinth system VX	3/26	Climate Control Accessories	7/66
Freestanding Bayable Enclosures TS 8	3/27	POWER DISTRIBUTION	8/68
Popular Accessories	3/30	Ri4Power	8/69
LED System Light	3/31	RiLine Accessories	8/70
System lights	3/32	PERFOREX CUSTOM SOLUTIONS	8/72
INDUSTRIAL CONSOLE & PC ENCLOSURE SYSTEMS	4/33		
CX one-piece console	4/34		
One-Piece Consoles Stainless Steel (304)	4/35		
PC Enclosures	4/36		
HYGIENIC DESIGN	5/37		
Hygienic Design Terminal Boxes HD	5/38		
Hygienic Design Compact Enclosures HD	5/40		
Hygienic Design System Enclosure HD	5/41		
Hygienic Design Command Panel and Printer Enclosure HD	5/42		
Hygienic Design Fire Extinguisher Enclosure HD	5/43		

While all care is taken, we cannot guarantee that all of the information in this publication is up to date and accurate. Specifications may change without notice. It is up to the customer to determine the suitability of a product for an application. APS Industrial assumes no responsibility for the use of the information in this publication.

RITTAL



SMALL ENCLOSURES

TERMINAL / JUNCTION BOX KL



Material:

- | Enclosure: Mild steel
- | Cover: Mild steel, all-round foamed-in PU seal

Surface finish:

- | Enclosure and cover: Dipcoat primed, powder-coated on the outside, textured paint

Supply includes:

- | Enclosure with cover
- | Quick-release fastener including plastic bushes

Colour:

- | RAL 7035

Protection category IP to IEC 60 529:

- | IP 66 (*IP 55)

Protection category NEMA:

- | NEMA 4 (* NEMA 12)
- | IK Code:
- | IK08

Mild Steel

WITHOUT GLAND PLATE		WITH GLAND PLATE	WIDTH MM	HEIGHT MM	PART NUMBER
D=80MM	D=120MM	D=120MM			MOUNTING PLATE
1514510	1500510	-	150	150	1560700
1528510	1529510	-	200	150	1575700
1516510	1502510	-	200	200	1562700
1515510	1501510	*1530510	300	150	1561700
1517510	1503510	*1531510	300	200	1563700
-	1507510	*1535510	300	300	1567700
-	1589510	-	400	150	1576700
1518510	1504510	*1532510	400	200	1564700
-	1508510	*1536510	400	300	1568700
-	1511510	*1539510	400	400	1571700
-	1505510	*1533510	500	200	1565700
-	1509510	*1537510	500	300	1569700
1519510	1506510	*1534510	600	200	1566700
-	1510510	*1538510	600	300	1570700
-	1512510	*1540510	600	400	1572700
-	1527510	*1542510	800	200	1574700
-	1513510	*1541510	800	400	1573700

Top Accessories

PART NUMBER	DESCRIPTION	PACKS OF
1590000	Wall Mounting Bracket (8mm wall distance)	4
1592000	Cover Hinge	6

SWITCH HOUSINGS STAINLESS STEEL



Material:

- | Enclosure: Stainless steel 1.4301 (AISI 304)
- | Cover: Stainless steel 1.4301 (AISI 304), all-round foamed-in PU seal

Surface finish:

- | Enclosure and cover: Brushed, grain 240

Supply includes:

- | Enclosure with cover
- | Quick-release fastener including plastic bushes

Protection category NEMA:

- | NEMA 4X
- | Protection category to IEC 60 529:
- | IP 66

Stainless Steel 304

PART NUMBER	WIDTH MM	HEIGHT MM	DEPTH MM	NO. OF SWITCH CUT-OUTS Ø 22.5 MM
2384010	100	100	90	1
2384020	160	100	90	2
2384030	220	100	90	3
2384040	280	100	90	4

Top Accessories

PART NUMBER	DESCRIPTION	PACKS OF
1594000	Wall Mounting Bracket (304 Stainless Steel - 8mm wall distance)	4

TERMINAL / JUNCTION BOX KX / KL STAINLESS STEEL



Material:

- | Enclosure: Stainless steel 1.4301 (AISI 304) and 1.4404 (316L)
- | Cover: Stainless steel, 1.4301 (AISI 304), and 1.4404 (316L)
- | all-round foamed-in PU seal

Surface finish:

- | Enclosure and cover: Brushed grain 180

Supply includes:

- | Enclosure with cover
- | Quick-release fastener including plastic bushes

Protection category IP to IEC 60 529:

- | IP 66

Protection category NEMA:

- | NEMA 4X

IK Code:

- | IK08

KX Stainless Steel 304

PART NUMBER	WIDTH MM	HEIGHT MM	DEPTH MM	MOUNTING PLATE
1560000	150 mm	150 mm	80 mm	1560800
1561000	300 mm	150 mm	80 mm	1561800
1562000	200 mm	200 mm	80 mm	1562800
1563000	300 mm	200 mm	80 mm	1563800
1564000	150 mm	150 mm	120 mm	1560800
1565000	200 mm	200 mm	120 mm	1562800
1566000	300 mm	200 mm	120 mm	1563800
1567000	300 mm	300 mm	120 mm	1567800
1568000	400 mm	200 mm	120 mm	1564800
1569000	400 mm	300 mm	120 mm	1568800

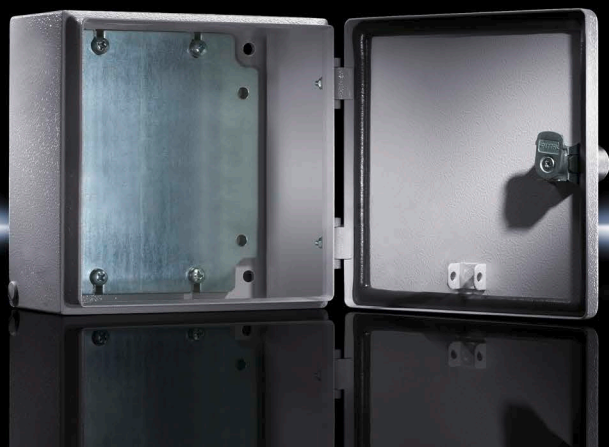
KL Stainless Steel 316

PART NUMBER	WIDTH MM	HEIGHT MM	DEPTH MM	MOUNTING PLATE
1521510	150	150	80	1560700
1523510	200	200	80	1562700
1522510	300	150	80	1561700
1524510	300	200	80	1563700
1525510	400	200	120	1564700

Top Accessories

PART NUMBER	DESCRIPTION	PACKS OF
1594010	KX Wall Mounting Bracket (304 Stainless Steel - 10mm wall distance)	4
1594000	KL Wall Mounting Bracket (304 Stainless Steel - 8mm wall distance)	4

E-BOX ENCLOSURES EB



Material:

| Enclosure and door: Mild steel, all-round foamed-in PU seal

Surface finish:

| Enclosure and door: Dipcoat primed, powder-coated on the outside, textured paint

| Mounting plate: Zinc-plated

Supply includes:

| Enclosure with hinged door

| 180° hinge

| Cam lock with 3 mm double-bit insert

| Mounting plate

Colour:

| RAL 7035

| Protection category IP to IEC 60 529:

| IP 66

Protection category NEMA:

| NEMA 4

IK Code:

| IK08

Mild Steel

PART NUMBER	WIDTH MM	HEIGHT MM	DEPTH MM
1551500	150	150	80
1553500	150	150	120
1545500	150	300	80
1548500	150	300	120
1546500	200	200	80
1549500	200	200	120
1552500	200	300	80
1554500	200	300	120
1547500	200	400	80
1550500	200	400	120
1557500	200	500	120
1555500	300	300	120
1556500	300	400	120
1577500	300	400	155
1578500	300	600	155
1579500	300	800	155

Top Accessories

PART NUMBER	DESCRIPTION	PACKS OF
1590000	Wall Mounting Bracket (Mild Steel, Zinc Plated - 8mm wall distance)	4
2584000	Pole Clamp	2
2411601 / 2411611... / 2411671	Cable Gland, polyamide	3 - 50
2411801 / 2411811... / 2411871	Cable Gland, brass	1 - 15

BUS ENCLOSURES KX



Material:

- | Enclosure: Mild steel
- | Door: Mild steel
- | Viewing window: made from polycarbonate, 4mm

Surface finish:

- | Enclosure and door: Dipcoat primed, powder-coated on the outside, textured paint

Supply includes:

- | Enclosure with hinged door
- | Viewing window cover
- | Mini cam locks

Colour:

- | RAL 7035

Protection category IP to IEC 60 529:

- | IP 65

Protection category NEMA:

- | NEMA 12

Mild Steel

PART NUMBER	WIDTH MM	HEIGHT MM	DEPTH MM	DOOR HINGE
1610000	400 mm	200 mm	155 mm	1564800
1611000	400 mm	300 mm	155 mm	1568800
1612000	600 mm	300 mm	155 mm	1570800
1613000	800 mm	300 mm	155 mm	1570810

OTHER SMALL ENCLOSURES



Polycarbonate Enclosures PK

Material:

- | Housing: Fibreglass reinforced polycarbonate
- | Cover: Fibreglass reinforced polycarbonate, all-round foamed in PU seal (light grey/transparent)
- | Cover screws: Polyamide
- | Insulating bungs: Polyethylene

Supply includes:

- | Enclosure with cover
- | Cover screws
- | Insulating bungs for wall mounting screws

Colour:

- | RAL 7035

Protection category IP to IEC 60 529:

- | IP 66

Protection category NEMA:

- | NEMA 4X

Dimensions range:

- | 65W x 65H x 57D to 360W x 254H x 165D



Cast Aluminium Enclosures GA

Material:

- | Enclosure: Cast aluminium
- | Cover: Cast aluminium, all-round CR cellular rubber cord seal

Surface finish:

- | Textured paint
- | Supply includes:
 - | Enclosure with cover
 - | Cover screws, captive
 - | Screws for attaching support rails
 - | Screw for connection of the PE conductor

Colour:

- | RAL 7001

Protection category IP to IEC 60 529:

- | IP 66

Protection category NEMA:

- | NEMA 4

IK Code:

- | IK08

Dimensions range:

- | 58W x 64H x 34D to 330W x 230H x 181D

Part number reference:

- | 9101210



Bus Enclosures KX Stainless Steel (304)

Material:

- | Enclosure: Stainless steel 1.4301 (AISI 304)
- | Cover: Stainless steel 1.4301 (AISI 304), all-round foamed-in PU seal
- | Hinges: Die-cast zinc

Surface finish

- | Enclosure and cover: Brushed, grain 180
- | 180° hinges: chrome-plated

Supply includes

- | Enclosure with cover
- | 180° hinges
- | Quick-release fastener including plastic bushes

Protection category to IEC 60 529

- | IP 66

Protection category NEMA

- | NEMA 4X



Rittal Modification Centre - Assembly

Rittal offers a fast and reliable assembly service working in conjunction with customer and end user to develop and deliver a complete solution.

Typical assemblies:

- | Escutheons
- | Swing frames
- | Punch sections
- | Side panels
- | Plinths
- | Cable management

Contact your APS Industrial product manager for more information

RITTAL

COMPACT ENCLOSURES

COMPACT ENCLOSURES AE



Material:

- | Enclosure: Mild steel
- | Door: Mild steel, all-round foamed-in PU seal

Surface finish:

- | Enclosure and door: Dipcoat primed, powder-coated on the outside, textured paint
- | Mounting plate: Zinc-plated

Supply includes:

- | Enclosure with hinged door(s), of all-round solid construction
- | Gland plate(s) in enclosure base
- | Mounting plate
- | Lock: 3mm double-bit

- | 3-point lock system is included for enclosures ≥ 1200 high

Colour:

- | RAL 7035

Protection category IP to IEC 60 529:

- | IP 66 (*IP55)

Protection category NEMA:

- | NEMA 4 (*NEMA 12)

IK Code:

- | IK08

Optional accessories:

- | Internal mounting rails
- | Baying kits,
- | Door stay,
- | Fans and filters,
- | Wiring plan pocket
- | Earthing kits,
- | Lock covers, different lock types
- | Pole mount brackets
- | Lights

Mild Steel

PART NUMBER	WIDTH MM	HEIGHT MM	DEPTH MM	DOOR(S)	INNER DOOR
*1032500	200	300	120	1	XAU10350199
*1035500	200	300	155	1	XAU10350199
1033500	300	300	210	1	XAU10330199
1036500	300	300	155	1	XAU10330199
1034500	300	400	210	1	XAU10340199
1030500	380	300	155	1	XAU10310199
1031500	380	300	210	1	XAU10310199
1038500	380	600	210	1	XAU10380199
1380500	380	380	210	1	XAU13800199
1338500	380	600	350	1	XAU10380199
1045500	400	500	210	1	XAU10450199
1037500	400	800	300	1	ON REQUEST
1050500	500	500	210	1	XAU10500199
1057500	500	700	250	1	XAU10570199
1350500	500	500	300	1	XAU10500199
1039500	600	380	210	1	XAU10390199
1054500	600	600	250	1	XAU10600199
1060500	600	600	210	1	XAU10600199
1076500	600	760	210	1	XAU10760199
1058500	600	800	250	1	XAU10580199
1090500	600	1000	250	1	XAU10900199
1339500	600	380	350	1	XAU10390199
1360500	600	600	350	1	XAU10600199
1376500	600	760	350	1	XAU10760199
1260500	600	1200	300	1	XAU12600199

COMPACT ENCLOSURES AE



Material:

- | Enclosure: Mild steel
- | Door: Mild steel, all-round foamed in PU seal
- | Surface finish:
- | Enclosure and door: Dipcoat primed, powder-coated on the outside, textured paint
- | Mounting plate: Zinc-plated

Supply includes:

- | Enclosure with hinged door(s), of all-round solid construction
- | Gland plate(s) in enclosure base
- | Mounting plate
- | Lock: 3mm double-bit

- | 3-point lock system is included for enclosures ≥ 1200 high

Colour:

- | RAL 7035

Protection category IP to IEC 60 529:

- | IP 66 (*IP 55)

Protection category NEMA:

- | NEMA 4 (*NEMA 12)

IK Code:

- | IK08

Mild Steel

PART NUMBER	WIDTH MM	HEIGHT MM	DEPTH MM	DOOR(S)	INNER DOOR
1073500	760	760	300	1	XAU10770199
1077500	760	760	210	1	XAU10770199
1055500	800	600	300	1	ON REQUEST
1180500	800	1000	300	1	XAU11800199
1280500	800	1200	300	1	XAU12800199
*1100500	1000	760	210	2	ON REQUEST
*1130500	1000	760	300	2	ON REQUEST
*1110500	1000	1000	300	2	ON REQUEST
*1114500	1000	1400	300	2	ON REQUEST
*1213500	1000	1200	300	2	ON REQUEST

Outdoor Aluminium housing for AE compact enclosures

PART NUMBER	TO FIT ENCLOSURE TYPE	TO FIT WIDTH	TO FIT HEIGHT	TO FIT DEPTH
9792055	AE	= 300 mm	= 400 mm	= 210 mm
9792065	AE	= 500 mm	= 500 mm	= 210 mm
9792075	AE	= 600 mm	= 600 mm	= 350 mm



* Wall mount brackets see popular accessories

COMPACT ENCLOSURES AX



Material:

- | Enclosure: Mild steel 1.5mm
- | Door: Sheet steel 2mm, all-round foamed-in PU seal

Surface finish:

- | Enclosure and door: Dipcoat primed, powder-coated on the outside, textured paint
- | Mounting plate: 2.5mm Zinc-plated

Supply includes

- | Enclosure with door(s)
- | Gland plate(s) in enclosure base
- | Mounting plate
- | Perforated door strip
- | Lock: 3 mm double-bit
- | 3-point lock system is included for enclosures ≥ 1200 high

Colour:

- | RAL 7035

Protection category IP to IEC 60 529:

- | IP 66 (*IP 55)

Protection category NEMA:

- | NEMA 12

IK Code

- | IK10

Mild Steel

PART NUMBER	WIDTH MM	HEIGHT MM	DEPTH MM	DOOR(S)	PLINTH FRONT/REAR 100MM	PLINTH SIDES 100MM
1059000	600 mm	800 mm	400 mm	1	2830061	2830410
1091000	600 mm	1,000 mm	400 mm	1	2830061	2830410
1261000	600 mm	1,200 mm	400 mm	1	2830061	2830410
1181000	800 mm	1,000 mm	400 mm	1	2830081	2830410
1281000	800 mm	1,200 mm	400 mm	1	2830081	2830410
*1115000	1,000 mm	1,400 mm	400 mm	2	2830101	2830410
*1214000	1,000 mm	1,200 mm	400 mm	2	2830101	2830410
*1116000	1,200 mm	1,200 mm	400 mm	2	2830121	2830410

Accessories

PART NUMBER	DESCRIPTION
2508020	AX Wall mounting bracket 20 mm PK4
2503020	AX Wall mounting bracket 40 mm PK4
2505510	Wall angle PK4
2584100	AX Pole clamp PK2
4052000	Multitool with various application functions for AX/VX

Many more accessories available see Rittal web site for details

COMPACT ENCLOSURES AE STAINLESS STEEL (304L)



Material:

- | Enclosure: Stainless steel
- | Door: Stainless steel, all-round foamed-in PU seal
- | Mounting plate: Mild steel
- | Stainless steel 1.4301 (AISI 304)
- | Lock insert: Die-cast zinc, nickel-plated

Surface finish:

- | Enclosure and door: Brushed, grain 400, peak-to-valley height < 0.8µm
- | Mounting plate: Zinc-plated
- | Custom sloping roof available

Supply includes:

- | Enclosure with door(s)
- | Mounting plate
- | Lock: 3mm double-bit 3-point lock system is included for enclosures ≥1200 high

Protection category IP to IEC 60 529:

- | IP 66 (*IP 55)

Protection category NEMA:

- | NEMA 4X (*NEMA 12)

IK Code:

- | IK08

Stainless Steel 304

PART NUMBER	WIDTH MM	HEIGHT MM	DEPTH MM	DOOR(S)	INNER DOOR*	RAIN CANOPY STAINLESS STEEL
1001600	200	300	120	1	XAU10350199	-
1002600	200	300	155	1	XAU110350199	2470000
1003600	300	300	210	1	XAU10330199	2361000
1005600	300	380	210	1	ON REQUEST	2361000
1004600	380	300	155	1	XAU10310199	2471000
1011600	380	300	210	1	XAU10310199	2472000
1006600	380	380	210	1	XAU13800199	2472000
1008600	380	600	210	1	XAU10380199	2472000
1015600	400	500	210	1	XAU10450199	-
1007600	500	500	210	1	XAU10500199	2362000
1013600	500	500	300	1	XAU10500199	-
1009600	600	380	210	1	XAU10390199	2473000
1010600	600	600	210	1	XAU10600199	2473000
1012600	600	760	210	1	XAU10760199	2473000
1014600	760	760	300	1	XAU10770199	2474000
1016600	800	1000	300	1	XAU11800199	2475000
1017600	800	1200	300	1	XAU12800199	2475000
*1018600	1000	1000	300	2	ON REQUEST	2363000
*1019600	1000	1200	300	2	ON REQUEST	2363000

* Modifications need to be made to enclosure to fit inner door. Studs need to be welded inside enclosure.

* Wall mount brackets see popular accessories

COMPACT ENCLOSURES AE STAINLESS STEEL (316L)



Material:

- | Enclosure: Stainless steel
- | Door: Stainless steel, all-round foamed-in PU seal
- | Mounting plate: Mild steel
- | Stainless steel 1.4404 (AISI 316L)
- | Lock insert: Stainless steel 1.4404 (AISI 316L)

Surface finish:

- | Enclosure and door: Brushed, grain 400, peak-to-valley height < 0.8 µm
- | Mounting plate: Zinc-plated

Supply includes:

- | Enclosure with door(s)

- | Mounting plate
- | Lock: 3mm double-bit
- | 3-point lock system is included for enclosures ≥1200 high
- | Nut-sert M8 to suit wall brackets

Protection category IP to IEC 60 529:

- | IP 66 (*IP 55)

Protection category NEMA:

- | NEMA 4X (*NEMA 12)

IK Code:

- | IK08

Stainless Steel 316L

PART NUMBER	WIDTH MM	HEIGHT MM	DEPTH MM	INNER DOOR	DOOR(S)
XAU1001500	200	300	120	XAU10350199	1
XAU1002500	200	300	155	XAU10350199	1
XAU1003500	300	300	210	XAU10330199	1
XAU1005500	300	380	210	ON REQUEST	1
XAU1004500	380	300	155	XAU10310199	1
XAU1011500	380	300	210	XAU10310199	1
XAU1006500	380	380	210	XAU13800199	1
XAU1008500	380	600	210	XAU10380199	1
XAU1015500	400	500	210	XAU10450199	1
XAU1463999	400	600	320	ON REQUEST	1
XAU1007500	500	500	210	XAU10500199	1
XAU1013500	500	500	300	XAU10500199	1
XAU1009500	600	380	210	XAU10390199	1
XAU1010500	600	600	210	XAU10600199	1
XAU1663999	600	600	300	XAU10600199	1
XAU1664999	600	600	400	XAU10600199	1
XAU1012500	600	760	210	XAU10760199	1
XAU1068500	600	800	300	XAU10580199	1
XAU1684999	600	800	400	XAU10580199	1
XAU1063999	600	1000	300	XAU10900199	1
XAU1014500	760	760	300	XAU10770199	1
XAU1884999	800	800	400	ON REQUEST	1
XAU1016500	800	1000	300	XAU11800199	1
XAU1804999	800	1000	400	XAU11800199	1
XAU1017500	800	1200	300	XAU12800199	1
XAU1824999	800	1200	400	XAU12800199	1
*XAU1018500	1000	1000	300	ON REQUEST	2
*XAU1019500	1000	1200	300	ON REQUEST	2
*XAU1024999	1000	1200	400	ON REQUEST	2
*XAU1224999	1200	1200	400	ON REQUEST	2

Accessories

PART NUMBER	DESCRIPTION	PACK UNITS
2433000	Wall mount bracket - stainless steel 1.4301 (AISI 304), 10mm wall distance	4 pcs
2433500	Wall mount bracket - stainless steel 1.4404 (AISI 316L), 10mm wall distance	4 pcs
2584100	Pole mount Kit	2 pcs
XAU2535990	Padlockable Handle to suit 304 and 316 AE	1 pc

* Wall mount brackets see popular accessories

* Modifications need to be made to enclosure to fit inner door. Studs need to be welded inside enclosure.

SLOPED ROOF ENCLOSURES AE STAINLESS STEEL (316L)



Material:

- | Enclosure: Stainless steel
- | Door: Stainless steel, all-round foamed-in PU seal
- | Mounting plate: Sheet steel, powder coated white
- | Stainless steel 1.4404 (AISI 316)
- | Lock insert: Cam lock made entirely from stainless steel 1.4404 (AISI 316)

Surface finish:

- | Enclosure and door: Brushed, grain 400, peak-to-valley height <0.8 µm
- | Mounting plate: Zinc-plated

Supply includes:

- | Enclosure with door(s)
- | Mounting plate
- | Lock: 3mm double-bit
- | 30 degree sloped roof
- | Additional dust / water proofing provided by rubber seal across top of door
- | Door set back underneath canopy
- | Nut-sert M8 to suit wall brackets
- | Gland plate included

Protection category IP to IEC 60 529:

- | IP 66)

Protection category NEMA:

- | NEMA 4X

Stainless Steel 316L

PART NUMBER	WIDTH (MM)	HEIGHT (MM)	DEPTH (MM)
XAU1002590	200	*300	155
XAU1006590	380	*380	210
XAU1008590	380	*600	210
XAU1012590	600	*760	210
XAU1068590	600	*800	300

* Usable height

* Modifications need to be made to enclosure to fit inner door. Studs need to be welded inside enclosure.

* Wall mount brackets see popular accessories

RIMINE SLOPED ROOF MINING ENCLOSURES STAINLESS STEEL (316L)



- Material:**
- | Enclosure: Stainless steel
 - | Door: Stainless steel, all-round foamed-in PU seal
 - | Mounting plate: Sheet steel
 - | Stainless steel 1.4404 (AISI 316)
- Surface finish:**
- | Enclosure and door: Brushed, grain 400, peak-to-valley height <0.8 µm
 - | Mounting plate: Zinc-plated
- Supply includes:**
- | Enclosure with door(s)
 - | Mounting plate
 - | Lock: 3mm double-bit
- | 3 point locking system
 - | Pad lockable handle
 - | 30 degree sloped roof with generous overhang
 - | Additional dust / water proofing provided by rubber seal across top of door
 - | Door set back underneath canopy
 - | Nut-sert M8 to suit wall brackets
 - | Gland plate included
- Protection category IP to IEC 60 529:**
- | IP 66)

Stainless Steel 316L

PART NUMBER	WIDTH (MM)	HEIGHT (MM)	DEPTH (MM)	FINISH	MOUNTING PLATE	HANDLE
XAURM4425SS	400	400	270	Stainless Steel Finish	Zinc-plated	Stainless Steel
XAURM7522SS	500	700	220	Stainless Steel Finish	Zinc-plated	Stainless Steel
XAURM7535SS	500	700	370	Stainless Steel Finish	Zinc-plated	Stainless Steel
XAURM10822SS	800	1000	220	Stainless Steel Finish	Zinc-plated	Stainless Steel
XAURM10840SS	800	1000	420	Stainless Steel Finish	Zinc-plated	Stainless Steel

- Material:**
- | Enclosure: Stainless steel
 - | Door: Stainless steel, all-round foamed-in PU seal
 - | Mounting plate: Sheet steel, powder coated white
 - | Stainless steel 1.4404 (AISI 316)
- Surface finish:**
- | Enclosure and door: RAL 2000 powder coat finish
 - | Mounting plate: Zinc-plated, powder coated white
- Supply includes:**
- | Enclosure with door(s)
 - | Depth adjustable mounting plate
 - | Lock: 3mm double-bit
- | 3 point locking system
 - | Pad lockable handle
 - | 30 degree sloped roof with generous overhang
 - | Additional dust / water proofing provided by rubber seal across top of door
 - | Door set back underneath canopy
 - | Nut-sert M8 to suit wall brackets
 - | Document holder
 - | Door stay
 - | Gland plate included
- Protection category IP to IEC 60 529:**
- | IP 66)

Stainless Steel 316L with RAL 2000 Powder Coat Finish

PART NUMBER	WIDTH (MM)	HEIGHT (MM)	DEPTH (MM)	FINISH	MOUNTING PLATE	HANDLE
XAURM4425SSX15	400	400	270	RAL 2000 White	White	Stainless Steel
XAURM7522SSX15	500	700	220	RAL 2000 White	White	Stainless Steel
XAURM7535SSX15	500	700	370	RAL 2000 White	White	Stainless Steel
XAURM10822SSX15	800	1000	220	RAL 2000 White	White	Stainless Steel
XAURM10840SSX15	800	1000	420	RAL 2000 White	White	Stainless Steel

APS RITTAL DISTRIBUTION BOARD ENCLOSURES



Material:

- | Enclosure: 1.5mm Mild Steel
- | Door: Mild steel, all-round foamed in PU seal
- | Enclosure and door: Dipcoat primed, powder-coated on the outside textured paint.
- | Semi Flush Rittal Swing Handle and 3 Point Locking System

Colour:

- | RAL 7035 Grey
- | Electrical Orange

Protection Category:

- | IP66

Mild Steel

PART NUMBER	WIDTH MM	HEIGHT MM	DEPTH MM	COLOUR	MOUNTING PLATE
XAURE040212	600	380	250	GREY	Included
XAURE040219	600	380	250	ORANGE	Included
XAURE040405	600	600	250	GREY	Included
XAURE050205	600	600	250	ORANGE	Included
XAURE010206	600	800	250	GREY	DBMP800
XAURE010208	600	800	250	ORANGE	DBMP800
XAURE010210	600	1000	250	GREY	DBMP1000
XAURE010212	600	1000	250	ORANGE	DBMP1000
XAURE013362	600	1200	250	GREY	DBMP1200
XAURE040204	600	1200	250	ORANGE	DBMP1200
XAURE040206	600	1500	250	GREY	DBMP1500
XAURE040208	600	1500	250	ORANGE	DBMP1500

PART NUMBER INNER DOOR	WIDTH MM	HEIGHT MM
XAU10390199	600	380
XAU10600199	600	600
XAU10580199	600	800
XAU10900199	600	1000
XAU12600199	600	1200

FIBREGLASS ENCLOSURES AX



Material:

- | Enclosure and door: Fibreglass-reinforced unsaturated polyester
- | Door: All-round foamed-in PU seal
- | Mounting plate: 2.5mm Mild steel
- | Viewing window: Polycarbonate
- | Fire protection corresponding to UL 94-V0

Surface finish:

- | Enclosure and door: Dyed plastic with no after-treatment
- | Mounting plate: Zinc-plated

Colour:

- | Similar to RAL 7035

Protection category IP to IEC 60 529:

- | IP 66 Solid
- | IP 56 Window

Protection category NEMA:

- | NEMA 4X Solid
- | NEMA 12 Window

Protection class:

- | II at 1000 V AC

Supply includes:

- | Enclosure with hinged door, of all-round solid construction, 3 mm double-bit lock
- | Door hinged on the right, may be swapped to the left
- | Mounting plate
- | Twin seal on the top and bottom edges of the door as integral rain protection strip
- | Please note the product-specific scope of supply.

Note:

- | Interior installation screws are required to secure components inside the enclosure
- | Components such as punched sections with mounting flanges may be attached on a 25 mm pitch pattern using the universal bracket

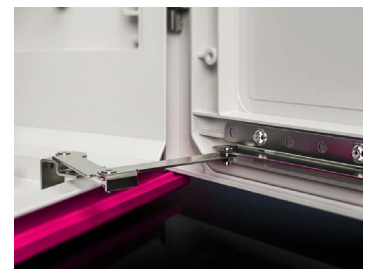
Approvals:

- | UL Further approvals can be found on the Internet

PART NUMBER STANDARD	PART NUMBER WITH WINDOW	WIDTH MM	HEIGHT MM	DEPTH MM	INNER DOOR
1432000	—	250 mm	350 mm	150 mm	
1434000	—	300 mm	400 mm	200 mm	
1444000	1448000	400 mm	400 mm	200 mm	1485744
1446000	1449000	400 mm	600 mm	200 mm	
1453000	1454000	500 mm	500 mm	300 mm	
1466000	1467000	600 mm	600 mm	200 mm	1485766
1468000	1469000	600 mm	800 mm	300 mm	1485768
1480000	1479000	800 mm	1000 mm	300 mm	

Accessories

PART NUMBER	DESCRIPTION
1485400	Wall mounting bracket for AX plastic 4 pc(s).
1485200	Universal Internal bracket for AX plastic
1485100	Door stay for AX plastic top or bottom mount PK2
1485300	Screws for interior installation for AX plastic
2584100	Pole Clamp Kit to suit
1485600	Mini-comfort handle only for AX lock inserts and semi-cylinders



EX ENCLOSURES



Applications:

- | Zone 1 and 2 or 21 and 22 to 94/9/EC
- | Ambient temperature range: -30 °C...+80 °C
- | The specified temperatures may be limited by the installed equipment
- | Explosion protection category to EN 60 079: Equipment protection thanks to increased safety (Ex e), equipment protection thanks to enclosure (Ex tB)

Material:

- | Enclosure: Fibreglass reinforced unsaturated polyester, surface resistance: < 109 Ω
- | Door: Fibreglass-reinforced unsaturated polyester, surface resistance: < 109 Ω all-round foamed-in silicone seal
- | Mounting plate: Sheet steel, zinc-plated, passivated

Colour:

- | RAL 9011
- | Ex Enclosures

Protection category IP to IEC 60 529:

- | IP 66

Supply includes:

- | Enclosure
- | Door
- | Mounting plate

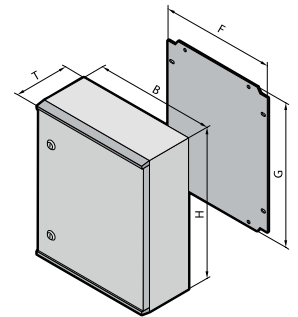
Certificates:

- | Available on the Internet

Approvals:

- | ATEX
- | IECEx

Further approvals can be found



Mild Steel

PART NUMBER	WIDTH MM	HEIGHT MM	DEPTH BOTTOM MM	NUMBER OF LOCKS
9202100	250	350	150	1
9203100	300	400	200	2
9204100	400	400	200	2
9205100	400	600	200	2
9206100	600	600	200	2
9207100	500	500	300	2
9208100	600	800	300	3
9209100	800	1,000	300	3

PART NUMBER	DESCRIPTION	PACKS OF
1485500	Wallmount Bracket	4
2584100	Pole clamp	2
1485200	Universal bracket	4
1485300	Pan head screw, self tapping	50

RITTAL



ENCLOSURE SYSTEMS

VX SE FREE-STANDING ENCLOSURE SYSTEM



Material:

- | Enclosure: Mild steel, 1.5 mm,
- | Door: Mild steel, 2.0 mm
- | Rear panel: Mild steel, 1.5 mm
- | Gland plates: Mild steel, 1.5 mm
- | Mounting plate: Mild steel, 3.0 mm

Surface finish:

- | Enclosure, door and rear panel: dipcoat-primed, powder-coated on the outside, textured paint
- | Mounting plate and gland plates: Zinc-plated, passivated

Supply includes:

- | Enclosure, solid top and sides
- | Door(s), right hand door hinge with single-door enclosures, may be swapped to opposite side
- | Mounting plate & gland plate
- | Rear panel, detachable
- | Lock: 3 mm double-bit
- | 2 TS punched rails 18 x 38 mm
- | Rear panel, one piece
- | Rear panel, two pieces*

Colour:

- | RAL 7035

Protection category IP to IEC 60 529:

- | IP 55

Optional Accessories

- | Door stays
- | Lights and door switches
- | Wiring plan pockets
- | Internal mounting rails
- | Comfort handles
- | Earthing kits
- | Cable Clamp Rails
- | Cable Entry Systems
- | Eye bolts

Mild Steel

PART NUMBER	WIDTH MM	HEIGHT MM	DEPTH MM	DOOR(S)	BASE/PLINTH 100MM		BASE/PLINTH 200MM	
					FRONT/REAR	SIDE	FRONT/REAR	SIDE
5820600	600	1800	300	1	8660002	8660030	8660022	8660040
5821600	600	2000	300	1	8660002	8660030	8660022	8660040
5822600	800	1800	300	1	8660003	8660030	8660023	8660040
5823600	800	2000	300	1	8660003	8660030	8660023	8660040
5824600	1200	1800	300	2	8660007	8660030	8660025	8660040
5825600	1200	2000	300	2	8660007	8660030	8660025	8660040
5830600	600	1800	400	1	8660002	8660031	8660022	8660041
5831600	800	1800	400	1	8660003	8660031	8660023	8660041
5832600	800	2000	400	1	8660003	8660031	8660023	8660041
5833600	800	2000	500	1	8660003	8660032	8660023	8660042
5834600	800	2000	600	1	8660003	8660033	8660023	8660043
5840600	1000	1800	400	2	8660005	8660031	8660024	8660041
5841600	1200	1800	400	2	8660007	8660031	8660025	8660041
*5842600	1600	1800	400	2	8660008	8660031	8660026	8660041
5843600	1200	2000	400	2	8660007	8660031	8660025	8660041
5844600	1200	2000	500	2	8660007	8660032	8660025	8660042
5845600	1200	2000	600	2	8660007	8660033	8660025	8660043
*5846600	1800	2000	500	2	8660009	8660032	8660027	8660042
5847600	1800	2000	600	2	8660009	8660033	8660027	8660043

Enclosure Inner Doors

PART NUMBER	DESCRIPTION
XAU86860199M	Inner door to suit 600 x 1800 TS 8 & VX SE
XAU86060199M	Inner door to suit 600 x 2000 TS 8 & VX SE
XAU88860199M	Inner door to suit 800 x 1800 TS 8 & VX SE
XAU88060199M	Inner door to suit 800 x 2000 TS 8 & VX SE

VX SE STAINLESS STEEL 304 FREE-STANDING ENCLOSURE SYSTEM



Material and Surface finish:

- | Enclosure: Stainless steel 1.4301 (AISI 304), 1.5 mm
- | Door: Stainless steel 1.4301 (AISI304), 2 mm,
- | Rear panel: Stainless steel 1.4301 (AISI 304), 1.5 mm exterior brushed grain size 400
- | Mounting plate: Sheet steel, 3 mm zinc-plated, passivated
- | Gland plates: Stainless steel 1.4301 (AISI 304), 1.5 mm, uncoated

Notes:

Due to the hardness of the material, we recommend using metal multitooth screw 2486.400 for the interior installation

Protection category IP to IEC 60 529:

- | IP 55

Protection category NEMA:

- | NEMA 12

Supply includes:

- | Enclosure, solid top and sides
- | Door(s)
- | R/h door hinge with single-door enclosures, may be swapped to opposite side
- | Rear panel, detachable
- | Mounting plate
- | Gland plates
- | Lock: 3 mm double-bit
- | 2 punched rails 18 x 39 mm

Stainless Steel 304

VX STAINLESS PART NUMBER	WIDTH MM	HEIGHT MM	DEPTH MM	DOOR(S)	BASE/PLINTH 100MM		BASE/PLINTH 200MM	
						SIDE	FRONT/REAR	SIDE
5850600	600 mm	1,600 mm	400 mm	1	8620050	8620070	8620060	8620080
5851600	600 mm	1,800 mm	500 mm	1	8620050	8620071	8620060	8620081
5856600	600 mm	1,200 mm	500 mm	1	8620050	8620071	8620060	8620081
5852600	800 mm	1,800 mm	500 mm	1	8620051	8620071	8620061	8620081
5853600	800 mm	2,000 mm	600 mm	1	8620051	8620072	8620061	8620082
5857600	800 mm	1,200 mm	500 mm	1	8620051	8620071	8620061	8620081
5854600	1,000 mm	1,800 mm	400 mm	1	8620052	8620070	8620062	8620080
5855600	1,200 mm	2,000 mm	500 mm	2	8620053	8620071	8620063	8620081
5858600	1,200 mm	1,200 mm	500 mm	2	8620053	8620071	8620063	8620081

Enclosure Inner Doors

PART NUMBER	DESCRIPTION
XAU86860199M	Inner door to suit 600 x 1800 TS 8 & VX SE
XAU86060199M	Inner door to suit 600 x 2000 TS 8 & VX SE
XAU88860199M	Inner door to suit 800 x 1800 TS 8 & VX SE
XAU88060199M	Inner door to suit 800 x 2000 TS 8 & VX SE

VX SE FREE-STANDING ENCLOSURE SYSTEM IP 66/NEMA 4



Material:

- | Enclosure frame: Mild steel, 1.5 mm
- | Door: Mild steel, 2.0 mm
- | Rear panel: Mild steel, 1.5 mm
- | Base: Mild steel, 1.5 mm
- | Mounting plate: Mild steel, 3.0 mm

Surface finish:

- | Enclosure, door and rear panel: Dipcoated-primed, powder-coated on the outside, textured paint
- | Mounting plate: Zinc-plated
- | Base: Dipcoat-primed and powder-coated, textured paint

Supply includes:

- | Enclosure, solid top and sides
- | Door(s)
- | Door hinged on the right, may be swapped to the left
- | Mounting plate
- | Base, solid
- | Rear panel, detachable Lock: 3mm double-bit
- | 2 TS punched rails 18 x 38 mm

Colour:

- | RAL 7035

Protection category IP to IEC 60 529:

- | IP 66

Protection category NEMA:

- | Type 4 (NEMA 4), 3R

IK code:

- | IK10

Mild Steel

PART NUMBER	WIDTH MM	HEIGHT MM	DEPTH MM	MOUNTING PLATE WIDTH MM	MOUNTING PLATE HEIGHT MM	BASE/PLINTH 100MM	
						FRONT/REAR	SIDE
5830680	600	1800	400	499	1696	8660050	8660070
5831680	800	1800	400	699	1696	8660051	8660070
5834680	800	2000	600	699	1896	8660051	8660072

VX SE STAINLESS STEEL 304 ENCLOSURE SYSTEM IP 66/NEMA 4X



Material:

- | Enclosure: Stainless steel, 1.4301 (AISI 304), 1.5 mm, exterior brushed
- | Door: Stainless steel, 1.4301 (AISI 304), 2 mm, exterior brushed
- | Rear panel: Stainless steel, 1.4301 (AISI 304), 1.5 mm, exterior brushed
- | Gland plates: Stainless steel, 1.4301 (AISI 304), 1.5 mm
- | Mounting plate: Mild steel, 3.0 mm

Surface finish:

- | Enclosure, door and rear panel: Brushed, grain size 400
- | Gland plates: Uncoated
- | Mounting plate: Zinc-plated

Supply includes:

- | Enclosure, solid top and sides
- | Door(s)

- | Door hinged on the right, may be swapped to the left
- | Rear panel, detachable
- | Mounting plate
- | Base, solid
- | Lock: 3mm double-bit
- | 2 TS punched rails 18 x 38 mm

Protection category IP to IEC 60 529:

- | IP 66

Protection category NEMA:

- | Type 4 (NEMA 4X), 3R

IK code:

- | IK10

Stainless Steel 304

PART NUMBER	WIDTH MM	HEIGHT MM	DEPTH MM	MOUNTING PLATE WIDTH MM	MOUNTING PLATE HEIGHT MM	BASE/PLINTH 100MM	
						FRONT/REAR	SIDE
5850680	600	1600	400	499	1496	8620050	8620070
5852680	800	1800	500	699	1696	8620051	8620071
5853680	800	2000	600	699	1896	8620051	8620072

Large Enclosure Configurator

Search for enclosures by size or part number

Visit www.rittal.com.au / www.rittal.co.nz >> Support >> Software >> Configurators >> Rittal Configurator System >> Start

BASE/PLINTH SYSTEM VX



Conversion Assistant - New base/plinth system VX

Base/plinth corner pieces with base/plinth trim panels, height 100 mm

WIDTH	PART NUMBER
300	8660000
400	8660001
600	8660002
800	8660003
850	8660004
1000	8660005
1100	8660006
1200	8660007
1600	8660008
1800	8660009

Base/plinth trim panels, sides, height 100 mm

WIDTH	PART NUMBER
300	8660030
400	8660031
500	8660032
600	8660033
800	8660034
1000	8660035
1200	8660036

Base/plinth, vented, height 100 mm

WIDTH	PART NUMBER
600	8660090
800	8660091

Base/plinth corner pieces with base/plinth trim panels, height 200 mm

WIDTH	PART NUMBER
300	8660020
400	8660021
600	8660022
800	8660023
1000	8660024
1200	8660025
1600	8660026
1800	8660027

Base/plinth trim panels, sides, height 200 mm

WIDTH	PART NUMBER
300	8660040
400	8660041
500	8660042
600	8660043
800	8660044
1000	8660045
1200	8660046

Base/plinth trim panels with brush strip, height 100 mm

WIDTH	PART NUMBER
600	8660092
800	8660093
1000	8660094
1200	8660095

PART NUMBER	DESCRIPTION
8660110	Transport castor for base/plinth system VX
8660100	Base mounting plate for base/plinth system VX
8660400	Base/plinth installation bracket for support strips and punched sections
8619470	Bracket/spacer for cable clamp rails and C rails
8660120	Levelling component for base/plinth system VX, 100 mm
8660121	Levelling component for base/plinth system VX, 200 mm
-	No longer required
-	No longer required
8660130	Base/plinth adaptor for twin castors, sheet steel
8660131	Base/plinth adaptor for levelling feet, sheet steel
8660096	Trim panel attachment for base/plinth trim panels VX, vented and vented with brush strip
8660.140	Baying bracket for base/plinth system VX

FREESTANDING BAYABLE ENCLOSURES TS 8



Material:

- | Enclosure frame: Mild steel, 1.5 mm – Roof: Mild steel, 1.5 mm
- | Door: Mild steel, 2.0 mm – Rear panel: Mild steel, 1.5 mm
- | Gland plates: Mild steel, 1.5 mm
- | Mounting plate: Mild steel, 3.0 mm

Surface finish:

- | Enclosure frame: Dipcoat-primed
- | Door, roof and rear panel: Dipcoated-primed, powder-coated on the outside, textured paint
- | Mounting plate and gland plates: Zinc-plated

Supply includes:

- | Enclosure frame

- | Door(s), right hand door hinge with single-door enclosures, may be swapped to opposite side
- | Roof plate and rear panel
- | Gland plates and Mounting plate
- | 2 TS punched rails 18 x 38 mm
- | 4 eyebolts
- | Lock: 3mm double-bit
- | 2 support strips fitted in the enclosure depth

Colour:

- | RAL 7035

Protection category IP to IEC 60 529:

- | IP 55

Protection category NEMA:

- | NEMA 12

IK Code:

- | IK09

Optional Accessories

- | Punched rails for internal mounting
- | 19" rails and swing frames
- | Lights and door switches
- | Comfort handles
- | Door stays
- | Wiring plan pockets
- | Earthing Kits
- | Cable entry systems
- | Baying Kits
- | Fans and filters
- | Air conditioners

Mild Steel

PART NUMBER	WIDTH MM	HEIGHT MM	DEPTH MM	DOOR(S)	SIDE PANELS	BASE/PLINTH 100MM		BASE/PLINTH 200MM	
						FRONT/REAR	SIDE	FRONT/REAR	SIDE
8485510	400	1800	500	1	8185235	8660001	8660032	8660021	8660042
8486510	400	1800	600	1	8186235	8660001	8660033	8660021	8660043
8405510	400	2000	500	1	8105235	8660001	8660032	8660021	8660042
8406510	400	2000	600	1	8106235	8660001	8660033	8660021	8660043
8615500	600	1200	500	1	8115235	8660002	8660032	8660022	8660042
8665500	600	1400	500	1	8145235	8660002	8660032	8660022	8660042
8665500	600	1600	500	1	8165235	8660002	8660032	8660022	8660042
8684500	600	1800	400	1	8184235	8660002	8660031	8660022	8660041
8685500	600	1800	500	1	8185235	8660002	8660032	8660022	8660042
8686500	600	1800	600	1	8186235	8660002	8660033	8660022	8660043
8604500	600	2000	400	1	8104235	8660002	8660031	8660022	8660041
8605500	600	2000	500	1	8105235	8660002	8660032	8660022	8660042
8606500	600	2000	600	1	8106235	8660002	8660033	8660022	8660043
8608500	600	2000	800	1	8108235	8660002	8660034	8660022	8660044
8626500	600	2200	600	1	8126235	8660002	8660033	8660022	8660043
8815500	800	1200	500	1	8115235	8660003	8660032	8660023	8660042
8845500	800	1400	500	1	8145235	8660003	8660032	8660023	8660042
8865500	800	1600	500	1	8165235	8660003	8660032	8660023	8660042
8884500	800	1800	400	1	8184235	8660003	8660031	8660023	8660041

FREESTANDING BAYABLE ENCLOSURES TS 8



PART NUMBER	WIDTH MM	HEIGHT MM	DEPTH MM	DOOR(S)	SIDE PANELS	BASE/PLINTH 100MM		BASE/PLINTH 200MM	
						FRONT/REAR	SIDE	FRONT/REAR	SIDE
8885500	800	1800	500	1	8185235	8660003	8660032	8660023	8660042
8880500	800	1800	500	2	8185235	8660003	8660032	8660023	8660042
8886500	800	1800	600	1	8186235	8660003	8660033	8660023	8660043
8881500	800	1800	600	2	8186235	8660003	8660033	8660023	8660043
8804500	800	2000	400	1	8104235	8660003	8660031	8660023	8660041
8805500	800	2000	500	1	8105235	8660003	8660032	8660023	8660042
8806500	800	2000	600	1	8106235	8660003	8660033	8660023	8660043
8808500	800	2000	800	1	8108235	8660003	8660034	8660023	8660044
8826500	800	2200	600	1	8126235	8660003	8660033	8660023	8660043
8828500	800	2200	800	1	8128235	8660003	8660034	8660023	8660044
8084500	1000	1800	400	1	8184235	8660005	8660031	8660024	8660041
8080500	1000	1800	400	2	8184235	8660005	8660031	8660024	8660041
8004500	1000	2000	400	2	8104235	8660005	8660031	8660024	8660041
8005500	1000	2000	500	2	8105235	8660005	8660032	8660024	8660042
8006500	1000	2000	600	2	8106235	8660005	8660033	8660024	8660043
8215500	1200	1200	500	2	8115235	8660007	8660032	8660025	8660042
8245500	1200	1400	500	2	8145235	8660007	8660032	8660025	8660042
8265500	1200	1600	500	2	8165235	8660007	8660032	8660025	8660042
8284500	1200	1800	400	2	8184235	8660007	8660031	8660025	8660041
8285500	1200	1800	500	2	8185235	8660007	8660032	8660025	8660042
8286500	1200	1800	600	2	8186235	8660007	8660033	8660025	8660043
8204500	1200	2000	400	2	8104235	8660007	8660031	8660025	8660041
8205500	1200	2000	500	2	8105235	8660007	8660032	8660025	8660042
8206500	1200	2000	600	2	8106235	8660007	8660033	8660025	8660043
8208500	1200	2000	800	2	8108235	8660007	8660034	8660025	8660044
8226500	1200	2200	600	2	8126235	8660007	8660033	8660025	8660043
8228500	1200	2200	800	2	8128235	8660007	8660034	8660025	8660044

Inner Doors

PART NUMBER	DESCRIPTION
XAU86860199M	Inner door to suit 600 x 1800 TS 8 & VX SE
XAU86060199M	Inner door to suit 600 x 2000 TS 8 & VX SE
XAU88860199M	Inner door to suit 800 x 1800 TS 8 & VX SE
XAU88060199M	Inner door to suit 800 x 2000 TS 8 & VX SE

FREESTANDING BAYABLE ENCLOSURES TS 8



- Material:**
- | Enclosure frame: Stainless steel, 1.4301 (AISI 304), 1.5 mm
 - | Roof: Stainless steel, 1.4301 (AISI 304), 1.5 mm, exterior brushed
 - | Door: Stainless steel, 1.4301 (AISI 304), 2 mm, exterior brushed
 - | Rear panel: Stainless steel, 1.4301 (AISI 304), 1.5 mm, exterior brushed
 - | Gland plates: Stainless steel, 1.4301 (AISI 304), 1.5 mm
 - | Mounting plate: Mild steel, 3.0 mm
- Surface finish:**
- | Enclosure frame and gland plates: Exterior brushed, grain size 400
 - | Door, roof and rear panel: Exterior brushed, grain size 400
 - | Mounting plate: Zinc-plated
- Supply includes:**
- | Enclosure frame
 - | Door(s), right hand door hinge with single-door enclosures, may be swapped to opposite side
- | Roof plate, rear panel, gland plates and mounting plate
 - | 4 eyebolts - Lock: 3mm double-bit
 - | 2 TS punched rails 18 x 38 mm
 - | 2 support strips fitted in the enclosure depth
- Protection category IP to IEC 60 529:**
- | IP 55
- Protection category NEMA:**
- | NEMA 12
- IK Code:**
- | IK09
- Options:**
- | Models available in 316 Stainless Steel / Models available in NEMA 4X

Stainless Steel 304

PART NUMBER	WIDTH MM	HEIGHT MM	DEPTH MM	DOOR(S)	SIDE PANELS	BASE/PLINTH 100MM		BASE/PLINTH 200MM	
						FRONT/REAR	SIDE	FRONT/REAR	SIDE
8457600	600	1800	500	1	8700850	8701600	8701050	8702600	8702050
8452600	600	2000	600	1	8700060	8701600	8701060	8702600	8702060
8454600	800	1800	400	1	8700840	8701800	8701040	8702800	8702040
8455600	800	1800	500	1	8700850	8701800	8701050	8702800	8702050
8450600	800	2000	600	1	8700060	8701800	8701040	8702800	8702040
8453600	1200	1800	500	2	8700850	8701200	8701050	8702200	8702050
8456600	1200	1800	400	2	8700840	8701200	8701040	8702200	8702040
8451600	1200	2000	600	2	8700060	8701200	8701060	8702200	8702060

POPULAR ACCESSORIES

AE Enclosures



Baying kit for AE

Baying kit for individual adaptation to various AE enclosure sizes.

PART NUMBER	PACK QTY	PROTECTION CATEGORY
1199100	KIT	IP 66



Wall mounting bracket for AE

For attaching to the enclosure from the outside. Simply insert the expandable dowel into the enclosure hole from the outside, and screw-fasten the wall bracket from the outside.

PART NUMBER	PACK QTY	MATERIAL	WALL DISTANCE
2433000	Pack of 4	Stainless steel 1.4301 (AISI 304)	10 mm
2433500	Pack of 4	Stainless steel 1.4404 (AISI 316L)	10 mm
2503010	Pack of 4	Mild steel, zinc-plated	40 mm
2508010	Pack of 4	Mild steel, zinc-plated	10 mm
2508100	Pack of 4	Mild steel, zinc-plated attaches from the outside	15 mm



Rails for interior installation AE

For mounting in the enclosure, no machining required. Suitable for all-round mounting on the sides, base and roof areas.

PART NUMBER	PACK QTY	FOR DEPTH
2383210	Pack of 4	= 210 mm
2383250	Pack of 4	= 250 mm
2383300	Pack of 4	= 300 mm
2383350	Pack of 4	= 350 mm



Padlockable Handle for AE Stainless Steel Enclosure

PART NUMBER	PACK QTY	PROTECTION CATEGORY
XAU2535990	Pack of 1	IP66

To suit AE Stainless Steel 304 and 316 Complete with 10mm hasp.

TS 8 Enclosures



Quick-fit baying clamp, one-piece for TS/TS

Simply attach the screws, insert the quick-fit baying clamp, tap in with a hammer and lock.

PART NUMBER	PACK QTY	DESCRIPTION
8800500	Pack of 6	Quick-fit baying clamp, one-piece



Baying connector, external for TS/TS

For mounting on the vertical enclosure sections from the outside.

PART NUMBER	PACK QTY	MATERIAL
8700000	Pack of 6	Stainless steel 1.4301 (AISI 304)
8800490	Pack of 6	Mild steel



Angular baying bracket for TS/TS

For a stable connection when transporting bayed enclosure suites.

PART NUMBER	PACK QTY	DESCRIPTION	MATERIAL
8800430	Pack of 4	Angular baying bracket	Mild steel



TS punched section with mounting flange, 17 x 73 mm

Variable, with 5 rows of holes for universal skeleton structures or partial assembly. Simply locate onto the TS punchings and secure.

PART NUMBER	PACK QTY	DESIGN	TO FIT ENCLOSURE WIDTH/DEPTH	FOR DOOR WIDTH	LENGTH
8612040	Pack of 4	Inner mounting	400 mm	500 mm	390 mm
8612050	Pack of 4	Inner mounting	500 mm	600 mm	490 mm
8612060	Pack of 4	Inner mounting	600 mm	-	590 mm
8612080	Pack of 4	Inner mounting	800 mm	900 mm	790 mm
8612140	Pack of 4	Outer mounting	400 mm	-	340 mm
8612150	Pack of 4	Outer mounting	500 mm	-	440 mm
8612160	Pack of 4	Outer mounting	600 mm	-	540 mm
8612180	Pack of 4	Outer mounting	800 mm	-	740 mm

LED SYSTEM LIGHT



Material:

- | Light body: Extruded aluminium
- | Light cover: Polycarbonate (halogen-free)
- | Light ends: PC-ABS (halogen-free)

Supply includes:

- | Assembly screws

Colour:

- | RAL 7016

Features:

- | Fast, tool-free assembly, simply latch and secure
- | May be fitted horizontally and vertically with no loss of space in the enclosure
- | Lights with motion detectors are equipped with a rotating LED board as standard, allowing the light to be perfectly adapted to any installation situation
- | Rotating connectors support installation in the most confined spaces
- | Simple through-wiring based on the plug & play system

MODEL		2500100	2500110	2500200	2500220	2500300	2500320
Output (lumens)		400	600	900	900	1200	1200
Length (mm)		262	337	437	437	437	437
Motion sensor		-	-	-	-	●	-
Rated operating voltage	100 - 240 V AC	●	●	●	-	●	●
	24 - 56 V DC	-	-	-	●	-	●
Equipment	Socket	-	-	-	-	-	-
	90° rotating connector	-	-	●	●	●	●
	Adjustable light direction	-	-	-	-	●	●
	Adjustable light distribution	-	-	●	●	●	●
Protection class		II (all-insulated)			III (SELV)	II (all-insulated)	III (SELV)
Approvals	UL	●	-	●	●	●	●
	cUL	●	-	●	●	●	●
	CCC	●	●	●	-	●	●
	ENEC	●	●	●	●	●	●
Installation type	Screw fastening	●	●	●	●	●	●
	Clip attachment	●	●	●	●	●	●
	Magnetic	●	●	●	●	●	●
Connection options	Infeed	2-pole	2-pole	3-pole	2-pole	3-pole	2-pole
	Through-wiring	2-pole	2-pole	3-pole	2-pole	3-pole	2-pole
	Door-operated switch	●	●	●	●	-	-
Mounting options	Enclosures with a 25 mm pitch pattern	Screw fastening/clip	-	Directly on the profile	Directly on the profile	Directly on the profile	Directly on the profile
	AE	Screw fastening	With universal bracket				
Accessories							
Universal bracket		2373000	2373000	2373000	2373000	2373000	2373000
Mounting kit magnet		2500480	2500480	2500480	2500480	2500480	2500480
Door-operated switch		2500460	2500460	2500460	2500460	-	-
Door-operated switch, UL		-	-	2500470	2500470	-	-
Connection accessories							
Infeed, 2 pole *(pkt of 5)		*2500420	*2500420	-	2500410	2500400	2500410
Infeed, 3 pole		-	-	2500400	-	-	-
Infeed, 3-pole, ENEC, UL		-	-	2500500	-	-	-
Through-wiring, 2-pole		2500450	2500450	-	2500440	2500500	2500440
Through-wiring, 3-pole		-	-	2500430	-	-	-
Through-wiring, 3-pole. ENEC, UL		-	-	2500530	-	2500530	-

Note: Contact your local APS Industrial Sales Representative for pricing

SYSTEM LIGHTS

LED compact system light in 24 V (DC) ($\pm 10\%$) version

- | Max. EMC compatibility
- | Protected, as it operates within the safety extra-low voltage range
- | Door operated switch connection supported
- | Integral through-wiring
- | Vertically hinged light cone

Material:

- | Light body: Extruded aluminium
- | Light cover: Polycarbonate (halogen-free)
- | Light ends: PC-ABS

Colour: Similar to RAL 7035

- | Protection category IP to IEC 60 529: IP 20

Supply includes:

- | LED compact system light with clip and screw
- | mounting kits, assembly parts

LED compact system light

PART NUMBER	INPUT VOLTAGE	LEDS	WIDTH
4140810	24 V (DC)	10	230 mm
4140820	24 V (DC)	20	330 mm
4140830	24 V (DC)	30	430 mm
4140840	24 V (DC)	40	530 mm

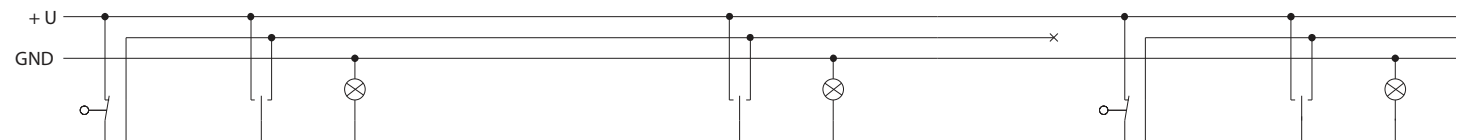
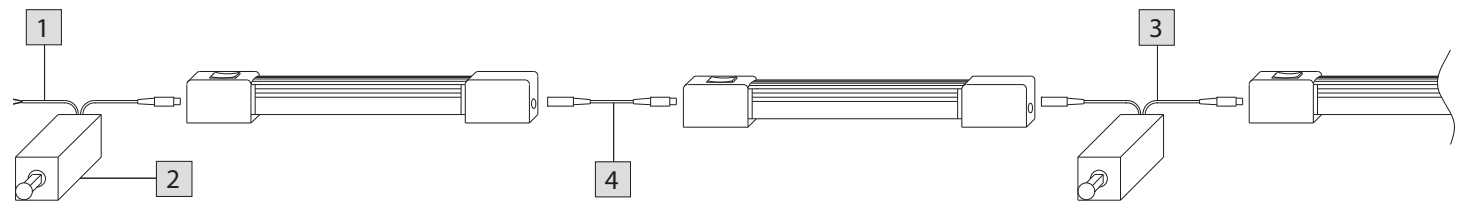


Connection accessories for LED compact system light

	CONNECTION CABLE	PART NUMBER	LENGTH MM	PACKS OF
1	LED connection cable	4315800	3000	1 pc(s).
	DOOR-OPERATED SWITCH	PART NUMBER	LENGTH MM	PACKS OF
2	With LED connection cable	4315810	3000	1 pc(s).
3	With LED interconnecting cable	4315820	1000	1 pc(s).
	INTERCONNECTING CABLE	PART NUMBER	LENGTH MM	PACKS OF
4	LED interconnecting cable	4315830	600	1 pc(s).
		4315840	1000	1 pc(s).
		4315850	3000	1 pc(s).

Layout diagram for LED compact system light 24 V (DC):

- 1 Connection cable
- 2 Door-operated switch with LED connection cable (open end/cable bush)
- 3 Door-operated switch with LED interconnecting cable
- 4 LED interconnecting cable for through-wiring



1



2

3



4

The background of the entire page is a photograph of industrial equipment, overlaid with a semi-transparent red filter. On the left, a tall cabinet has a large monitor displaying a software interface with various data fields and graphs. To the right, a smaller cabinet has its top door open, revealing internal components and another monitor. The overall scene is dimly lit, emphasizing the equipment's form and function.

INDUSTRIAL CONSOLE & PC ENCLOSURE SYSTEMS

CX ONE-PIECE CONSOLE



Material:

- | Enclosure: Sheet steel 1.5 mm
- | Door and console cover: Sheet steel, 2.0 mm, all-round foamed-in PU seal
- | Mounting plate: Sheet steel, 2.5 mm Zinc-plated

Surface finish:

- | Enclosure, cover and door: Dipcoat-primed, powder-coated on the outside, textured paint

supply includes

- | Enclosure, solid back and sides
- | Door or double-door at front, with 3-point locking system
- | Mounting plate
- | Cover with cam locks, hinged at the rear, 2 stays with automatic latching.
- | Automatic unlatching on the left, manual on the right.
- | Gland plate
- | Lock: 3 mm double-bit

Colour:

- | RAL 7035

Protection category IP to IEC 60 529:

- | IP 55

IK Code

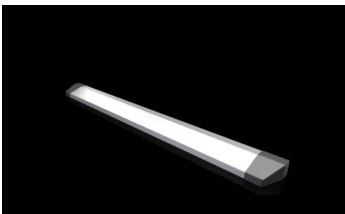
- | IK10

Mild Steel

PART NUMBER	WIDTH MM	HEIGHT MM	DEPTH BOTTOM MM	DEPTH TOP MM	DOOR(S)	BASE/PLINTH 100MM		BASE/PLINTH 200MM	
						FRONT/REAR	SIDE	FRONT/REAR	SIDE
6748000	800	970	400	1	8660003	8660031	8660023	8660041	8660041
6740000	1000	970	400	2	8660005	8660031	8660024	8660041	8660041
6742000	1200	970	400	2	8660007	8660031	8660025	8660041	8660041

Accessories

PART NUMBER	DESCRIPTION
6730800	CX aluminium strip
2519020	Door stay for AX
8601450	Cross member for VX, TS, VX SE, TP, PC, IW, Blue e+ chillers
2515200	Wiring plan Pocket To fit door width 400mm – 500mm
2515400	Wiring plan Pocket To fit door width 760mm – 800mm



ONE-PIECE CONSOLES STAINLESS STEEL (304)



Material:

- | Enclosure: Stainless steel 1.4301 (AISI 304) 1.5mm
- | Door or double door and console lid; Stainless steel 1.4301 (AISI 304). 2.0 MM
- | Mounting plate: Mild steel 3.0 mm

Protection category IP to IEC 60 529:

- | IP 55

Protection category NEMA:

- | NEMA 12

Surface finish:

- | Enclosure, door, console lid and gland plates: Brushed grain 240
- | Mounting plate: Zinc-plated

Supply includes:

- | Enclosure, solid back and sides
- | Door or double door at front, with locking rod
- | Console lid with lid stay and cam lock latched in the enclosure
- | Locks with double-bit insert
- | Gland plates, divided
- | Mounting plate

Stainless Steel 304

PART NUMBER	DOOR(S)	WIDTH MM	HEIGHT MM	DEPTH BOTTOM MM	DEPTH TOP MM	BASE/PLINTH 100MM COMPLETE
2683600	1	600	960	400	480	2865000
2684600	1	800	960	400	480	2869000
2685600	2	1000	960	400	480	2867000
2686600	2	1200	960	400	480	2870000

PC ENCLOSURES



PC Enclosures - Mild Steel

Material:

- | Enclosure, door, rear door, mounting compartment, supports: Mild steel
- | Handles, decorative trim panels: Plastic
- | Door trim panels: Aluminium
- | Viewing window: Single-pane safety glass

Surface finish:

- | Enclosure and door: Dipcoat primed, powder-coated on the outside, textured paint
- | Mounting compartment, support: Powder-coated

Supply includes:

- | Enclosure, door, rear door
- | Glazed door, top
- | Keyboard drawer
- | Component shelf

Colour:

- | Colour: Enclosure, door, decorative trim panels, supports: RAL 7035
- | Handle: RAL 7015
- | Monitor panel, door centre part: RAL 7015

Protection category IP to IEC 60 529:

- | IP 55

Protection category NEMA:

- | NEMA 12

PART NUMBER	WIDTH MM	HEIGHT MM	DEPTH MM	DESIGN
5366050	600	1,600	636	with glazed door at the top, keyboard drawer and component shelf
5366150	600	1,600	636	with glazed door at the top, folding keyboard and component shelf
5366250	600	1,600	636	with glazed door at the top, desk section and component shelf
5366350	600	1,600	636	with glazed door at the top, keyboard drawer, small mounting compartment and component shelf
5366450	600	1,600	636	with keyboard drawer and large mounting compartment
5368050	600	1,600	836	with glazed door at the top, keyboard drawer and component shelf
5386050	800	1,600	636	with glazed door at the top, keyboard drawer and component shelf

PC Enclosures - Stainless Steel

Material:

- | Enclosure: Stainless steel 1.4301 (AISI 304), 1.5 mm
- | Rear door: Stainless steel 1.4301 (AISI 304), 2.0 mm
- | Gland plates: Stainless steel 1.4301 (AISI 304), 1.5 mm
- | Monitor field: Single-pane safety glass, 4 mm

Surface finish:

- | Brushed, grain 400

Supply includes:

- | Enclosure, solid top and side
- | Rear door with locking rod
- | Component shelf
- | Keyboard drawer with swing-down front for handrest and mouse pad support
- | Lock insert, lock no 3524 E
- | Bottom door with locking rod
- | Gland plates, divided

Protection category IP to IEC 60 529:

- | IP 55

Protection category NEMA:

- | NEMA 12

PART NUMBER	WIDTH MM	HEIGHT MM	DEPTH MM
4650150	600	1600	630



RITTAL

HYGIENIC DESIGN

aps

HYGIENIC DESIGN TERMINAL BOXES HD



Material:

- | Enclosure and cover: Stainless steel 1.4301 (AISI 304) 1.5 mm
- | Screw plug: Stainless steel
- | Seal: Silicone, compliant with FDA Guideline 21 CFR 177.2600

Surface finish

- | Enclosure and cover: Brushed, grain 400, peak-to-valley height < 0.8 µm
- | Seal: Blue, dyed (RAL 5010)

Supply includes

- | Enclosure of all-round solid construction
- | Cover with switch cut-out
- | Seal and screw plug (supplied loose)

Lock

- | Type of lock: Hygiene-compliant quick-release hexagon fastener
- | Number locks: 4

IP protection category to IEC 60 529

- | IP 66
- | IP X9

Protection category NEMA

- | NEMA 13
- | NEMA 3R
- | NEMA 4X

Type rating to UL 50E

- | Type 1, 3, 3X, 4, 4X, 12, 13

PART NUMBER HD	NO. OF SWITCH CUT-OUTS Ø 22.5 MM	WIDTH FRONT	WIDTH (REAR)	HEIGHT, FRONT	HEIGHT REAR	DEPTH
1681600	1	100 mm	122 mm	100 mm	122 mm	90 mm
1682600	2	100 mm	122 mm	160 mm	182 mm	90 mm
1683600	3	100 mm	122 mm	220 mm	242 mm	90 mm
1684600	4	100 mm	122 mm	280 mm	302 mm	90 mm
1686600	6	160 mm	182 mm	220 mm	242 mm	90 mm

Accessories

Cable Glands HD

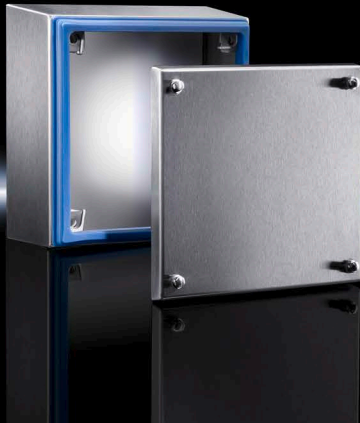
PART NUMBER HD	DESIGN	THREAD	MIN. CABLE DIAMETER	MAX. CABLE DIAMETER
2410001	Standard	M12 x 1.5	3 mm	6.5 mm
2410011	Standard	M16 x 1.5	5 mm	10 mm
2410021	Standard	M20 x 1.5	6 mm	12 mm
2410031	Standard	M25 x 1.5	12 mm	17 mm



PART NUMBER	DESCRIPTION
4000100	Wall Spacer Bracket HD 50mm Long x 34mm dia pack of 1 Note: Replacement seals available on request.
2459500	Pressure relief stoppers



HYGIENIC DESIGN TERMINAL BOXES HD



Design:

- | Enclosure angled forwards by 3°

Material:

- | Enclosure and cover: Stainless steel 1.4301 (AISI 304) 1.5 mm
- | Mounting bracket: Sheet steel, zinc-plated, passivated, 2.0 mm
- | Screw plug: Stainless steel
- | Seal: Silicone, compliant with FDA Guideline 21 CFR 177.2600

Supply includes:

- | Enclosure of all-round solid construction
- | Cover
- | Mounting bracket (pre-assembled)
- | Seal and screw plug (supplied loose)

Surface finish:

- | Enclosure and cover: Brushed, grain 400, peak-to-valley height < 0.8 µm
- | Seal: Blue, dyed (RAL 5010)

Protection category IP to IEC 60 529:

- | IP 66
- | IP X9

Protection category NEMA:

- | NEMA 13
- | NEMA 3R
- | NEMA 4X

Approvals:

- | UL
- | cUL

PART NUMBER HD	WIDTH FRONT MM	WIDTH REAR MM	HEIGHT FRONT MM	HEIGHT REAR MM	DEPTH MM	MOUNTING PLATE PACK OF 1
1670600	150	172	150	172	80	1560800
1671600	150	177	150	177	120	1560800
1672600	200	227	200	227	120	1562800
1674600	300	327	200	227	120	1563800
1675600	400	427	200	227	120	1564800
1676600	400	427	300	327	120	1568800

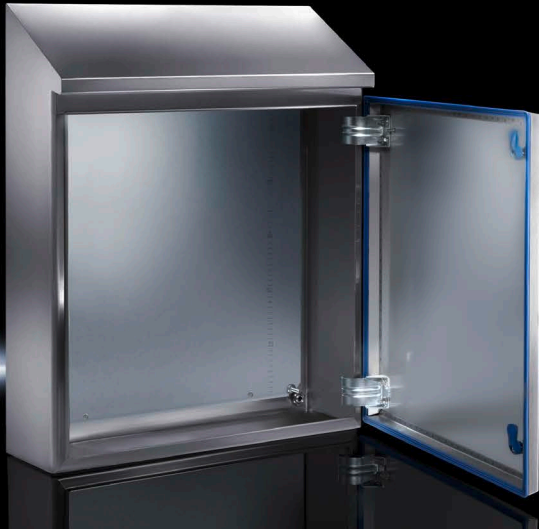
Accessories

PART NUMBER	DESCRIPTION
4000100	Wall Spacer Bracket HD 50mm Long x 34mm dia pack of 1.

Note: Replacement seals available on request.



HYGIENIC DESIGN COMPACT ENCLOSURES HD



Material:

- | Enclosure and door: Stainless steel 1.4301 (AISI 304)
- | Mounting plate: Mild steel

Lock inserts HD:

- | Stainless steel 1.4404 (AISI 316L)

Seal:

- | Silicone, compliant with FDA Guideline 21 CFR 177.2600

Surface finish:

- | Enclosure and door: Brushed, grain 400, peak-to-valley height < 0.8µm
- | Mounting plate: Zinc-plated
- | Seal: Blue, dyed (RAL 5010)

Supply includes:

- | Enclosure of all-round solid construction
- | Door with inserted seal
- | Door hinged on the

Protection category IP to IEC 60 529:

- | IP 66

Protection category IP to DIN 40 050-9:

- | IP 69K *(IP X9)

Protection category NEMA:

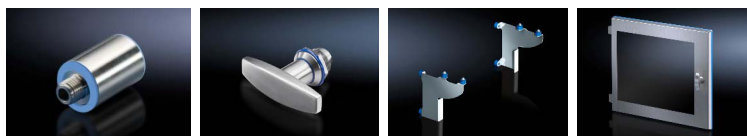
- | NEMA 13
- | NEMA 4X

PART NUMBER	WIDTH FRONT MM	HEIGHT FRONT MM	HEIGHT REAR MM	DEPTH MM	DOORS	MOUNTING PLATE WIDTH MM	MOUNTING PLATE HEIGHT MM	INTERNAL ASSEMBLY RAIL 4 PACK
1302600	220	350	437	155	1	160	275	
1304600	310	430	549	210	1	250	355	
1305600	390	550	669	210	1	330	475	
1306600	390	430	549	210	1	330	355	
1307600	510	550	669	210	1	450	475	
1308600	390	650	769	210	1	330	575	5001050
1310600	610	650	769	210	1	550	575	5001050
1311600	610	650	821	300	1	550	575	5001050
1312600	610	810	981	300	1	550	735	5001050
1314600	810	430	549	210	1	750	355	
1315600	810	650	821	300	1	750	575	5001050
1316600	810	1050	1221	300	1	745	975	5001052
1317600	810	1250	1421	300	1	745	1175	5001053
1320600	610	430	601	300	1	549	355	
1318600	1010	1050	1280	400	2	945	975	5001052
1319600	1010	1250	1480	400	2	945	1175	5001053

Accessories

PART NUMBER	DESCRIPTION
4000100	Wall Spacer Bracket HD 50mm Long x 34mm dia pack of 1.
4000065	T handle HD
4000110	HD wall spacer bracket 150 mm
4000080	HD Viewing window, WHD: 518x436x23 mm. For the protection of switches or displays.

Note: Replacement seals available on request.



HYGIENIC DESIGN SYSTEM ENCLOSURE HD



Material:

- | Enclosure and door: Stainless steel 1.4301 (AISI 304)
- | Lock inserts HD: Stainless steel 1.4404 (AISI 316L)
- | Seal: Silicone, compliant with FDA Guideline 21 CFR 177.2600
- | Mounting plate: Mild steel

Protection category IP to IEC 60 529:

- | IP 66

Protection category DIN 40 050-9:

- | IP 59K

Surface finish:

- | Enclosure and door: Brushed, grain 400, peak-to-valley height < 0.8 µm
- | Mounting plate: Zinc-plated
- | Seal: Blue, dyed (RAL 5010)

Supply includes:

- | Enclosure frame with welded rear panel gland plate
- | Door with inserted seal
- | Right hand door hinge with single-door enclosures, may be swapped to opposite side
- | Mounting plate

PART NUMBER	WIDTH MM	HEIGHT MM	DEPTH MM	ACCESSORIES				
				HD SIDE PANELS 1 PAIR	HD BAYING FRAME PACK OF 1	MOUNTING PLATE INFILL PACK OF 1	HD ANGLED ROOF 30° OPEN AT THE SIDES PACK OF 1	HD SIDE PANELS FOR ANGLED ROOF 1 PAIR WW
4000485*	400	1800	500	4000185*	4000785	4000508*	4000545*	4000505*
4000685	600	1800	500	4000185	4000785	4000508	4000565	4000505
4000885	800	1800	500	4000185	4000785	4000508	4000585	4000505
4000285	1200	1800	500	4000185	4000785	4000508	4000525	4000505

*Customised/Extended delivery times

Accessories

PART NUMBER	DESCRIPTION
4000240	HD Levelling feet without base mount
4000250	HD Levelling feet with base mount

HYGIENIC DESIGN COMMAND PANEL AND PRINTER ENCLOSURE HD



Material:

- | Enclosure and door: Stainless steel 1.4301 (AISI 304)
- | Lock insert HD: Stainless steel 1.4404 (AISI 316L)
- | Viewing window: Polycarbonate
- | Seal: Silicone, compliant with FDA Guideline 21 CFR 177.2600
- | Viewing window: Polycarbonate

Surface finish:

- | Enclosure and door: Brushed, grain 400, peak-to-valley height < 0.8 µm
- | Seal: Blue, dyed (RAL 5010)

Supply includes:

- | Enclosure of all-round solid construction
- | Door with viewing window and inserted seal
- | R/h door hinge
- | Holder for desktop TFT with VESA 75/100 locator

Protection category to IEC 60 529:

- | IP 66

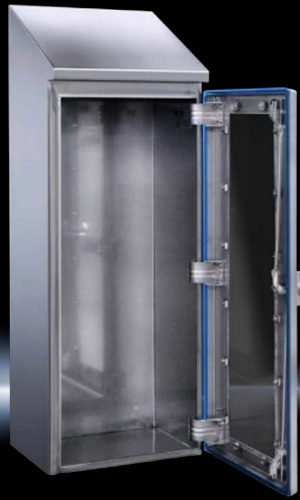
	PART NUMBER	WIDTH MM	HEIGHT, FRONT MM	HEIGHT REAR MM	DEPTH MM
Command Panel	4000062	810	692	848	266
Printer Enclosure	4000064	810	863	888	496

Accessories

PART NUMBER	DESCRIPTION
4000066	HD connection components for command panels HD, printer enclosures HD
4000072	HD keyboard support



HYGIENIC DESIGN FIRE EXTINGUISHER ENCLOSURE HD

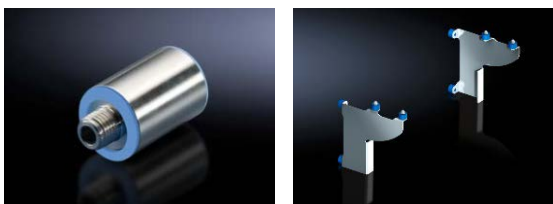


- Material:**
- | Enclosure and door: Stainless steel 1.4301 (AISI 304)
 - | Mounting plate: Mild steel
- Material:**
- | Enclosure and door: Stainless steel 1.4301 (AISI 304)
 - | Handle and lock: Stainless steel 1.4301 (AISI 304)
 - | Viewing window: Polycarbonate
- Seal:**
- | Silicone, compliant with FDA Guideline 21 CFR 177.2600
- Roof:**
- | Angled forward by 30°
- Surface finish:**
- | Enclosure and door: Brushed, grain 400, peak-to-valley height < 0.8 µm
 - | Seal: Blue, dyed (RAL 5010)
- Supply includes:**
- | Enclosure of all-round solid construction
 - | Door with viewing window and inserted seal
 - | Interchangeable door hinge
 - | T handle with 3-point lock system
- Protection category to IEC 60 529:**
- | IP 66 / IP59K
- Protection category**
- | IP 69K

PART NUMBER	WIDTH MM	HEIGHT, FRONT MM	HEIGHT REAR MM	DEPTH MM
4000075	390	840	1010	300

Accessories

PART NUMBER	DESCRIPTION
4000100	Wall Spacer Bracket HD 50mm Long x 34mm dia pack of 1. Note: Replacement seals available on request.
4000110	HD wall spacer bracket 150 mm



The background of the entire page is a photograph of Rittal outdoor enclosures. On the left, there is a closed cabinet with two doors and a large ventilation grille on the right door. On the right, a larger cabinet is shown with its double doors open, revealing a server rack with multiple empty slots. The scene is set against a dark background, and the enclosures are reflected on a glossy surface below them.

OUTDOOR ENCLOSURES

WALL MOUNTED ENCLOSURES CS



Material:

- | Enclosure: Aluminium AlMg3
- | Mounting plate: Aluminium, 2 mm

Surface finish:

- | Enclosure: Powder Coated, UV-resistant pure polyester
- | Mounting plate: Clear chromated

Supply includes:

- | Double-walled outdoor enclosure, fully preconfigured
- | Inner enclosure with mounting plate, gland plate and security lock
- | Mounting bracket for enclosure internal thermostat or hygostat
- | Outer enclosure with designer cover and security lock 3524 E
- | Two C rails on the rear panel

Colour:

- | RAL 7035
- | Protection category IP to IEC 60 529:
- | IP 55

Protection category NEMA:

- | NEMA 4

IK Code:

- | IK08

Double-walled

PART NUMBER	DESCRIPTION	WIDTH MM	HEIGHT MM	DEPTH MM
9791015	Inner	300	400	170
	Outer	370	522	210
9791025	Inner	350	440	170
	Outer	420	560	210
9791035	Inner	460	565	220
	Outer	530	700	265
9791045	Inner	580	580	333
	Outer	630	780	380

Top Accessories

PART NUMBER	DESCRIPTION	PACK OF
2584000	Pole Clamp	2
3110000	Enclosure Internal Thermostat	1
3118000	Hygostat	1

BASIC ENCLOSURES CS



Material:

- | Aluminium AlMg3
- | Surface finish:
- | Powder-coated
- | UV-resistant pure polyester

Supply includes:

- | Single-walled outdoor enclosure, fully preconfigured
- | Basic enclosure with gland plate, three-part
- | 25mm system punchings in the roof, base, front and in the enclosure depth
- | Front door(s) with door stay, swing lever handle and semi-cylinder, lock BJ 20027
- | Transport plinth with screw-fastened trim panels front and rear
- | Rain canopy

Colour:

- | RAL 7035

Protection category IP to IEC 60 529:

- | IP 55

Protection category NEMA:

- | NEMA 3R

IK Code:

- | IK07

Single-walled and one-door, width 600 and 800mm

PART NUMBER	WIDTH MM	HEIGHT MM	DEPTH MM	MOUNTING PLATE
9783530	600	1200	500	9765092
9783610	800	1200	500	9765095
9784540	1200	1200	500	9765191

Note: 19 inch mounting angles available. Please contact your APS Industrial sales representative for a quotation



Description

- Outdoor enclosure with 100 mm transport plinth and rain canopy with projections on all sides. Side panels, rear panel and door fully double-walled on the outside, the entire TS 8 frame is available for interior installation.

Material

- Enclosure frame: Stainless steel 1.4301 (AISI 304)
- Enclosure panels and base/plinth trim: Aluminium, AlMg3

Rain canopy:

- Aluminium

Surface finish

- Powder-coated
- UV-resistant pure polyester

Colour

- RAL 7035

Protection category IP to IEC 60 529

- IP 55

Supply includes

- Double-walled outdoor enclosure, fully preconfigured
- TS 8 frame with 25 mm system punchings in the roof and base frame plus vertical sections with two mounting levels
- Front door with door stay, swing lever handle and semi-cylinder, lock BJ 20027
- Side panels left and right
- Rear panel
- Rain canopy
- Base/plinth with screw-fastened gland plates and screw-fastened trim panels front and rear
- All enclosure panels are doubled and earthed (external wall onto internal wall)

Note: A climate control unit or adaptor plate is required to seal the enclosures with cut-out

PART NUMBER	WIDTH MM	HEIGHT MM	DEPTH MM	DESIGN
9774510	600 mm	1,800 mm	600 mm	Without cut-out
9828500	800 mm	1,200 mm	800 mm	Without cut-out
9828550	800 mm	1,200 mm	800 mm	With cut-out for outdoor cooling units 1.5 kW
9868500	800 mm	1,600 mm	800 mm	Without cut-out
9868550	800 mm	1,600 mm	800 mm	With cut-out for outdoor cooling units 1.5 kW
9888500	800 mm	1,800 mm	800 mm	Without cut-out
9888550	800 mm	1,800 mm	800 mm	With cut-out for outdoor cooling units 1.5 kW
9888560	800 mm	1,800 mm	800 mm	With cut-out for outdoor cooling units 2 - 5 kW

Accessories

PART NUMBER	DESCRIPTION
9828110	CS Adaptor Plate To accommodate fan-and-filter units for Enclosure with a cut-out.
3185330	Air Conditioner Blue e+ outdoor cooling unit 1.5kW
3189340	Air Conditioner Blue e+ outdoor cooling unit 4.9kW
7827160	19" (483.6mm) mounting angles Pack of 2
7827480	Depth Stay Pack of 2
5050063	Mounting plate attachment
3243100	Fan & Filter 230VAC 500m ³ /h
3244100	Fan & Filter 230VAC 700m ³ /h
3243200	Outlet Filter 323 x 323 mm

TOPTEC BAYABLE CS



- Material:**
- | Base frame: Stainless steel
 - | Enclosure panels: Aluminium
 - | Rain canopy: Aluminium
- Surface finish:**
- | Powder-coated
 - | UV-resistant pure polyester
- Supply includes:**
- | Double-walled outdoor enclosure, fully preconfigured
 - | TS 8 frame with 25mm system punchings in the roof and base frame plus vertical sections with two mounting levels
- Colour:**
- | RAL 7035
- Protection category IP to IEC 60 529:**
- | IP 55
- IK code:**
- | IK10
- Variants and modifications available on request:**
- | Dimensions - Rear door - Mounting panel - Baying - Climate control - Battery tray - Side door - Mounting angles

PART NUMBER	WIDTH MM	HEIGHT MM	DEPTH MM	SIDE PANEL	OPTIONAL REAR DOOR	DESIGN
9781666	600	1600	600	9781660	5051444	-
9781686	600	1800	600	9781860	5051446	-
9781818	800	1200	800	9781180	5051443	-
9781828	800	2000	800	9781280	5051448	-
9781866	800	1600	600	9781660	5051445	-
9781868	800	1600	800	9781680	5051445	-
9781888	800	1800	800	9781880	5051447	-
9782818	800	1200	800	9781180	5051443	With cut-out for outdoor cooling units 1.5 kW
9782828	800	2000	800	9781280	5051448	With cut-out for outdoor cooling units 2 - 5 kW
9782866	800	1600	600	9781660	5051445	With cut-out for outdoor cooling units 1.5 kW
9782868	800	1600	800	9781680	5051445	With cut-out for outdoor cooling units 1.5 kW
9782888	800	1800	800	9781880	5051447	With cut-out for outdoor cooling units 1.5 kW
9783888	800	1800	800	9781880	5051447	With cut-out for outdoor cooling units 2 - 5 kW

Accessories

PART NUMBER	DESCRIPTION	PACKS OF
9828110	CS Adaptor Plate	1 pc
3185330	Blue e+ outdoor cooling unit	1 pcs
7827160	19" (483.6mm) mounting angles	2 pcs
7827480	Depth Stay	2 pcs
5050063	Mounting plate attachment	1 pc



The Ultimate In Efficiency

Blue e+, Rittal's revolution in energy efficiency through innovative hybrid technology, utilising two parallel cooling circuits working together.

- | 75% energy saved due to inverter technology, demand-regulated components and heat pipe technology
- | Unique multi-voltage capability for world wide use
- | Intuitive operation via touch display
- | Identical mounting cut-out (external mounting, partial internal mounting and full internal mounting) for four output categories

CLIMATE CONTROL



BLUE E+ FAN AND FILTER UNITS



Product description:

- Complete fan unit for tool-free mounting on surfaces.
- Air throughput from 20 - 1160 m³/h, standard protection category IP 54.

Operating temperature range (environment):

- 30°C...+55°C

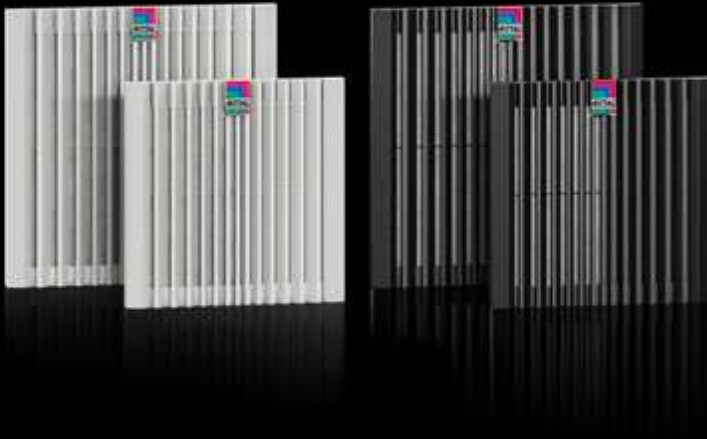


Protection category IP to IEC 60 529:

- IP54 with chopped-fibre filter/pleated filter
- IP55 with pleated filter and absorber mat
- IP56 with chopped-fibre filter/pleated filter and hose-proof hood

PART NUMBER (FAN)	PART NUMBER (FILTER)	AIR FLOW RATE (M ³ /H, UNIMPEDED - CHOPPED FIBER FILTER)	AIR FLOW RATE (M ³ /H, UNIMPEDED - PLEATED FILTER)	WIDTH (MM)	HEIGHT (MM)	DEPTH (MM)	VOLTAGE (V)	RATED CURRENT (A)
3237700	3237300	20/25	-	116.5	116.5	64.5	230	0.1/0.09
3237710	3237300	20/25	-	116.5	116.5	64.5	115	0.14/0.13
3237724	3237300	20	-	116.5	116.5	64.5	24 (DC)	0.06
3238700	3238300	53/64	-	148.5	148.5	82.5	230	0.1/0.12
3238710	3238300	53/64	63/72	148.5	148.5	82.5	115	0.2/0.21
3238724	3238300	53	63	148.5	148.5	82.5	24 (DC)	0.27
3239700	3239300	100/115	110/125	204	204	105	230	0.1/0.12
3239710	3239300	100/115	110/125	204	204	105	115	0.2/0.21
3239724	3239300	100	110	204	204	105	24 (DC)	0.27
3240700	3240300	175/157	218/191	255	255	129	230	0.2/0.21
3240710	3240300	175/157	218/191	255	255	129	115	0.41/0.42
3240724	3240300	175	218	255	255	129	24 (DC)	0.42
3241700	3240300	225/245	272/280	255	255	129	230	0.27/0.32
3241710	3240300	225/245	272/280	255	255	129	115	0.54/0.6
3241724	3240300	225	272	255	255	129	24 (DC)	0.8
3243700	3243300	540/590	625/716	323	323	144.5	230	0.39/0.47
3243710	3243300	540/590	625/716	323	323	144.5	115	0.81/0.9
3244700	3243300	700/770	867/910	323	323	156	230	0.51/0.68
3244710	3243300	700/770	867/910	323	323	156	115	1.06/1.47
3244740	3243300	700/770	867/910	323	323	156	400/460	0.22/0.28

BLUE E+ EC FAN AND FILTER UNITS



Product description:

The energy-efficient version with EC technology stands out for more than just its unique IoT capabilities. The Blue e+ fan-and-filter unit unlocks countless other advantages, from energy efficiency, to monitoring and sustainability, through to a higher air throughput (175 – 1,160 m³/h).

Protection category IP to IEC 60 529:

- | IP54 with chopped-fibre filter/pleated filter
- | IP55 with pleated filter and absorber mat
- | IP56 with chopped-fibre filter/pleated filter and hose-proof hood



Operating temperature range (environment) :

- | -25°C...+55°C

PART NUMBER (FAN)	PART NUMBER (FILTER)	AIR FLOW RATE (M ³ /H) UNIMPEDED (WITH CHOPPED-FIBRE FILTER)	AIR FLOW RATE (M ³ /H) UNIMPEDED (WITH PLEATED FILTER)	WIDTH (MM)	HEIGHT (MM)	DEPTH (MM)	VOLTAGE (V) (50/60 HZ)	RATED CURRENT (A)
3240900	3240300	175	218	255	255	137.5	100-240	0.2
3241900	3240300	225	272	255	255	137.5	100-240	0.3
3243900	3243300	540	625	323	323	156.5	100-240	0.88
3244900	3243300	700	867	323	323	161	100-240	1.97
3245900	3243300	931	1161	323	323	161	200-240	1.38
3245910	3243300	931	1161	323	323	156	100 -130	2.52

We reserve the right to make technical modifications, EC & EMC fans/filters available.

BLUE E+ EMC FAN AND FILTER UNITS



Product description:

- Complete fan unit with EMC shielding for tool-free mounting on surfaces.
- Air throughput from 20 - 900 m³/h, standard protection category IP 54

Protection category IP to IEC 60 529:

- IP54 with chopped-fibre filter
- IP56 with chopped-fibre filter and hose-proof hood

Operating temperature range (environment) :

- 25°C...+55°C



PART NUMBER (FAN)	PART NUMBER (FILTER)	AIR FLOW RATE (M ³ /H) UNIMPEDED (WITH CHOPPED-FIBRE FILTER)	AIR FLOW RATE (M ³ /H) UNIMPEDED (WITH PLEATED FILTER)	WIDTH (MM)	HEIGHT (MM)	DEPTH (MM)	VOLTAGE (V) (50/60 HZ)	RATED CURRENT (A)
3237800	3237400	20/25	-	116.5	116.5	64.5	230	0.1/0.09
3237810	3237400	20/25	-	116.5	116.5	64.5	115	0.14/0.13
3238800	3238400	53/64	-	148.5	148.5	82.5	230	0.1/0.12
3238810	3238400	53/64	-	148.5	148.5	82.5	115	0.2/0.21
3238824	3238400	53	-	148.5	148.5	82.5	24 (DC)	0.27
3239800	3239400	100/115	-	204	204	105	230	0.1/0.12
3239810	3239400	100/115	-	204	204	105	115	0.2/0.21
3239824	3239400	100	-	204	204	105	24 (DC)	0.27
3240800	3240400	175/157	-	255	255	129	230	0.2/0.21
3240810	3240400	175/157	-	255	255	129	115	0.41/0.42
3241800	3240400	225/245	-	255	255	129	230	0.27/0.32
3241810	3240400	225/245	-	255	255	129	115	0.54/0.6
3243800	3243400	540/590	-	323	323	144.5	230	0.39/0.47
3243810	3243400	540/590	-	323	323	144.5	115	0.81/0.9
3244800	3243400	700/770	-	323	323	156	230	0.51/0.68
3244810	3243400	700/770	-	323	323	156	115	1.06/1.47
3245800	3243400	931	-	323	323	161	200- 240	1.38
3245810	3243400	931	-	323	323	156	100 - 130	2.52

TOPTHERM FAN AND FILTER UNITS



Product description:

- Complete fan unit for tool-free mounting on surfaces. Air throughput from 20 - 700 m³/h, standard protection category
- IP 54.

Protection category IP to IEC 60 529:

- IP 54

Protection category NEMA:

- NEMA 12
- With additional hose-proof hood: the protection category would be improved to IP 56, NEMA 3 or NEMA 3R (for more details refer to the accessories section)

FAN AND FILTER MAT	OUTLET FILTER	AIR FLOW RATE (M ³ /H) 50HZ UNIMPEDED	EXTERNAL WIDTH MM	EXTERNAL HEIGHT (H1) MM	DEPTH (T2) MM	VOLTAGE (V) (50/60HZ)	RATED CURRENT A 50HZ
3237100	3237200	20	116.5	116.5	43	230	0.065
3237110	3237200	20	116.5	116.5	43	115	0.12
3237124	3237200	20	116.5	116.5	43	24 (DC)	0.125
3238100	3238200	55	148.5	148.5	58.5	230	0.12
3238110	3238200	55	148.5	148.5	58.5	115	0.24
3238124	3238200	55	148.5	148.5	58.5	24 (DC)	0.23
3239100	3239200	105	204	204	90	230	0.12
3239110	3239200	105	204	204	90	115	0.24
3239124	3239200	105	204	204	90	24 (DC)	0.23
3240100	3240200	180	255	255	107	230	0.21
3240110	3240200	180	255	255	107	115	0.42
3240124	3240200	180	255	255	107	24 (DC)	0.43
3241100	3240200	230	255	255	107	230	0.26
3241110	3240200	230	255	255	107	115	0.52
3241124	3240200	230	255	255	107	24 (DC)	0.78
3243100	3243200	550	323	323	118.5	230	0.37
3243110	3243200	550	323	323	118.5	115	0.75
3244100	3243200	700	323	323	130.5	230	0.43
3244110	3243200	700	323	323	130.5	115	0.9
3244140	3243200	700	323	323	130.5	400/460	0.17

Note: We reserve the right to make technical modifications, EC & EMC fans/filters available

ROOF MOUNTED FILTER FANS



Product description:

The new generation of roof-mounted fans is one system for all sizes. Only one mounting cut-out is needed for all output categories. Air routing with minimal pressure losses ensures a high level of efficiency, while an innovative clamping attachment supports a high protection category of IP54.

Protection category IP to IEC 60 529:

- | IP 21 without filter mat
- | IP 54 including pleated filter

Operating temperature range (environment):

- | -20°C...+55°C

ROOF VENT	OUTLET FILTER	AIR FLOW RATE (M ³ /H) UNIMPEDED (WITH PLEATED FILTER)	WIDTH MM	HEIGHT MM	DEPTH MM	VOLTAGE (V) (HZ)	RATED CURRENT A
3138000	3243200	-	400	133	400	-	-
3139100	3243200	417	400	133	400	230, 1~, 50/60	0.22 / 0.27
3139110	3243200	417	400	133	400	115, 1~, 50/60	0.43 / 0.55
3140100	3243200	725	400	133	400	230, 1~, 50/60	0.43 / 0.56
3140110	3243200	725	400	133	400	115, 1~, 50/60	0.88 / 1.17
3140140	3243200	700	400	133	400	400, 3~, 50/60 460, 3~, 60	0.17 / 0.19
EC TECHNOLOGY	OUTLET FILTER	AIR FLOW RATE (M ³ /H) UNIMPEDED (WITH PLEATED FILTER)	WIDTH MM	HEIGHT MM	DEPTH MM	VOLTAGE (V) (HZ)	RATED CURRENT A
3140500	3243200	976	400	133	400	220 - 240, 1~, 50/60	1
3140510	3243200	976	400	133	400	115, 1~, 60	1.51

WALL MOUNTED COOLING UNITS



Product description:

| SK Blue e cooling unit, wall-mounted, 0.36-3.95 kW, 230/115/400/460 V, 1/3~, 50/60 Hz, sheet steel/stainless steel (304)

Protection category IP to IEC 60 529:

| External circuit: IP 34
| Internal circuit: IP 54

Operating temperature range (environment):

| +10°C...+55°C

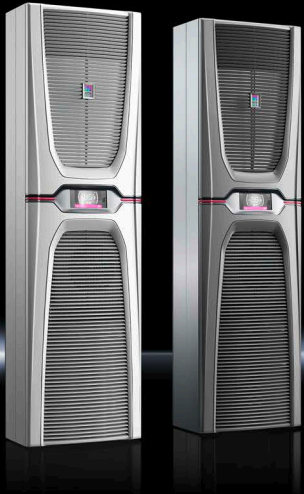
Refrigerant/cooling medium:

| R-513A



MILD STEEL		STAINLESS STEEL		COOLING OUTPUT (W)*	WIDTH MM	HEIGHT MM	DEPTH MM	OPERATING VOLTAGE (V) (50/60HZ)
BASIC CONTROL	COMFORT CONTROL	BASIC CONTROL	COMFORT CONTROL					
3302100	-	3302200	-	310	280	550	140	230
3302110	-	3302210	-	320	280	550	140	115
-	3303500	-	3303600	520	280	550	210	230
-	3303510	-	3303610	600	280	550	210	115
-	3361500	-	3361600	820	280	550	206	230
-	3361510	-	3361610	870	280	550	206	115
-	3361540	-	3361640	820	280	550	206	400
-	3304500	-	3304600	1100	400	950	260	230
-	3304510	-	3304610	1100	400	950	260	115
-	3304540	-	3304640	1100	400	950	260	400/460
-	3305500	-	3305600	1600	400	950	260	230
-	3305510	-	3305610	1600	400	950	260	115
-	3305540	-	3305640	1600	400	950	260	400/460
-	3328500	-	3328600	2100	400	1580	295	230
-	3328510	-	3328610	2100	400	1580	295	115
-	3328540	-	3328640	2050	400	1580	295	400/460
-	3329500	-	3329600	2550	400	1580	295	230
-	3329510	-	3329610	2550	400	1580	295	115
-	3329540	-	3329640	2550	400	1580	295	400/460
-	3332540	-	3332640	3950	500	1580	340	400/460

WALL MOUNTED COOLING UNITS BLUE E+



Product description:

| SK Blue e+ cooling unit, wall-mounted, 1,6 – 6,00 kW,
110-240 V, 1~, 380-480 V, 3~, 50-60 Hz, sheet steel/stainless steel (304)

Protection category IP to IEC 60 529:

| Internal circuit IP 55

Operating temperature range (environment):

| -20°C...+60°C

Refrigerant/cooling medium:

| R-513A

| *Total cooling output 50Hz L35 L35 to DIN EN 14511



MILD STEEL	STAINLESS STEEL	COOLING OUTPUT (W)*	WIDTH MM	HEIGHT MM	DEPTH MM	OPERATING VOLTAGE (V)
3185830	3185530	1600	400	950	310	110 - 240, 1~, 50/60 380 - 480, 3~, 50/60
3186930	3186630	2000	450	1600	294	110 - 240, 1~, 50/60 380 - 480, 3~, 50/60
3187930	3187630	2600	450	1600	294	110 - 240, 1~, 50/60 380 - 480, 3~, 50/60
3188940	3188640	4000	450	1600	294	380 - 480, 3~, 50/60
3189940	3189640	5500	450	1600	294	380 - 480, 3~, 50/60

WALL MOUNTED COOLING UNITS BLUE E+ S



Product description:

- | SK Blue e+ S cooling unit, wall-mounted, 0.3 – 1.0 kW,
- | 110-240 V, 1~, 380-480 V, 3~, 50-60 Hz, sheet steel
- | Protection category IP to IEC 60 529:
- | IP54 with chopped-fibre filter
- | IP56 with chopped-fibre filter and hose-proof hood

Operating temperature range (environment):

- | -20°C...+60°C

Refrigerant/cooling medium:

- | R-513A

*Total cooling output L35 L35/50Hz 60Hz to DIN EN 14511



SHEET STEEL	COOLING OUTPUT (W)*	WIDTH MM	HEIGHT MM	DEPTH MM	VOLTAGE (V) (50/60 HZ)	INTEGRAL ELECTRIC CONDENSATE EVAPORATION
3178800	300	300	570	159	110 - 240	Yes
3178801	300	300	570	159	110 - 240	No
3179800	520	300	570	199	110 - 240	Yes
3179801	520	300	570	199	110 - 240	No
3180800	780	300	570	250	110 - 240	Yes
3184800	1000	400	950	196	110 - 240	Yes
3184840	1000	400	950	196	380 - 480	Yes

WALL MOUNTED COOLING UNITS BLUE E+ OUTDOOR



Product description:

- | SK Blue e+ outdoor cooling unit, wall-mounted, 1.5 – 5.0 kW,
- | 110-240 V, 1~, 380-480 V, 3~, 50-60 Hz, Aluminium AlMg3

Protection category IP to IEC 60 529:

- | IP54 without mounting frame
- | IP56 with mounting frame

Operating temperature range (environment):

- | -30°C...+60°C

Refrigerant/cooling medium:

- | R-513A

*Total cooling output L35 L35/50Hz 60Hz to DIN EN 14511



SHEET STEEL	COOLING OUTPUT (W)*	WIDTH MM	HEIGHT MM	DEPTH MM	VOLTAGE (V) (50/60 HZ)
3185330	1500	415	990	280	110 - 240, 1~380 - 480, 3~
3186330	2000	465	1640	260	110 - 240, 1~380 - 480, 3~
3187330	2500	465	1640	260	110 - 240, 1~380 - 480, 3~
3188340	3700	465	1640	360	380 - 480, 3~
3189340	4900	465	1640	360	380 - 480, 3~

TOPTHERM WALL-MOUNTED COOLING UNIT BLUE E



Product Description:

Energy-efficient Blue e wall-mounted cooling 0.5-2.5kW with integral e-Comfort controller, RiNano coating on the condenser, electric condensate evaporation, Mild Steel RAL 7035, Outdoor Mounting

Operating temperature range (environment):

-20 °C...+50 °C

Refrigerant/cooling medium:

R-513A



Protection category:

UL Type 3R/4, 12. Suitable for outdoor use. May be linked to the IoT interface via the Blue e IoT adaptor

TopTherm wall-mounted cooling unit Blue e, UL Type 3R/4 Total cooling output 0.50 – 2.50 kW

PART NUMBER COMFORT CONTROLLER	TOTAL COOLING OUTPUT W L35 L35 AT 50 HZ	TOTAL COOLING OUTPUT W L35 L35 AT 60 HZ	WIDTH MM	HEIGHT MM	DEPTH MM	RATED OPERATING VOLTAGE (V - HZ)
3303508	440	500	285	620	298	230 V, 1~, 50 Hz/60 Hz
3303518	-	500	285	620	298	115 V, 1~, 60 Hz
3304508	1100	1250	405	1020	358	230 V, 1~, 50 Hz/60 Hz
3304518	1100	1250	405	1020	358	115 V, 1~, 50 Hz/60 Hz
3304548	1100	1250	405	1020	358	400 V, 3~, 50 Hz 460 V, 3~, 60 Hz
3305508	1600	1730	405	1020	358	230 V, 1~, 50 Hz/60 Hz
3305518	1600	1730	405	1020	358	115 V, 1~, 50 Hz/60 Hz
3305548	1600	1610	405	1020	358	400 V, 3~, 50 Hz 460 V, 3~, 60 Hz
3329508	2550	2600	405	1650	388	230 V, 1~, 50 Hz/60 Hz
3329518	2550	2600	405	1650	388	115 V, 1~, 50 Hz/60 Hz
3329548	2550	2750	405	1650	388	400 V, 3~, 50 Hz 460 V, 3~, 60 Hz

Accessories

PART NUMBER	DESCRIPTION	PACKS OF
4127010	Door Operated Switch	1
31241001	Cable for SK BUS system	1

WALL MOUNTED COOLING UNITS NEMA 4X



Product description:

Energy-efficient Blue e wall-mounted cooling, 0.5-2.5 kW, 230/115/400/460 V, 1/3~, 50/60 Hz, stainless steel (316L), e-Comfort controller integrated as standard, RiNano coating on the condenser, electrical condensate evaporation.

Operating temperature range (environment):

+10°C...+55°C

Refrigerant/cooling medium:

R-513A



Protection category NEMA:

NEMA 4X

*Total cooling output 50Hz L35 L35 to DIN EN 14511

TopTherm wall-mounted cooling unit Blue e, UL Type 3R/4 Total cooling output 0.50 – 2.50 kW

PART NUMBER COMFORT CONTROLLER	COOLING OUTPUT (W)*	WIDTH MM	HEIGHT MM	DEPTH MM	RATED OPERATING VOLTAGE (V - HZ)
3303504	520	285	620	298	230 - 50/60
3303514	600	285	620	298	115 - 60
3304504	1100	405	1020	358	230 - 50/60
3304514	1100	405	1020	358	115 - 50/60
3304544	1100	405	1020	358	400 - 50/460 - 60
3305504	1600	405	1020	358	230 - 50/60
3305514	1600	405	1020	358	115 - 50/60
3305544	1600	405	1020	358	400 - 50/460 - 60
3328504	2100	405	1650	388	230 - 50/60
3328514	2100	405	1650	388	115 - 50/60
3328544	2050	405	1650	388	400 - 50/460 - 60
3329504	2550	405	1650	388	230 - 50/60
3329514	2550	405	1650	388	115 - 50/60
3329544	2430	405	1650	388	400 - 50/460 - 60

ROOF MOUNTED COOLING UNITS



Product description:

| SK Blue e cooling unit, Roof-mounted, 0.55-3.8 kW, 230/115/400/460 V, 1/3~, 50/60 Hz, sheet steel, nano-coated condenser, integrated electric condensate evaporation

Protection category IP to IEC 60 529:

| External circuit IP 34
| Internal circuit IP 54

Operating temperature range (environment):

| +10°C...+55°C

Refrigerant/cooling medium:

| R-513A

Product description:

| Blue e+ cooling unit, Roof-mounted, 1.3 kW, 110 V - 240 V, 380 V - 480 V 1/3~, 50/60 Hz, sheet steel, pleated filter, fully wired ready for connection

Protection category IP to IEC 60 529:

| External circuit IP 54 with pleated filter
| Internal circuit IP 54 with pleated filter

Operating temperature range (environment):

| -20°C...+55°C

Refrigerant/cooling medium:

| R-513A



Total cooling output 50Hz L35 L35 to DIN EN 14511

MILD STEEL COMFORT CONTROL	STAINLESS STEEL COMFORT CONTROL	COOLING OUTPUT (W)*	WIDTH MM	HEIGHT MM	DEPTH MM	OPERATING VOLTAGE (V) (50/60HZ)
Blue e						
3382500	3382600	600	597	417	380	230
3382510	3382610	600	597	417	380	115
3273500	-	1100	597	417	475	230
3359500	3359600	770	597	417	380	230
3359510	3359610	770	597	417	380	115
3359540	3359640	770	597	417	380	400
3383500	3383600	1000	597	417	475	230
3383510	3383610	1000	597	417	475	115
3383540	3383640	1000	597	417	475	400
3384500	3384600	1600	597	417	475	230
3384510	3384610	1600	597	417	475	115
3384540	3384640	1600	597	417	475	400
3385500	3385600	2000	597	417	475	230
3385510	3385610	2000	597	417	475	115
3385540	3385640	2000	597	417	475	400
3386540	3386640	3000	796	470	580	400/460
3387540	3387640	3800	796	470	580	400/460
Blue e+						
3185730	-	1300	700	308	560	110 - 240, 1~ 380 - 480, 3~

TOPTHERM AIR/AIR HEAT EXCHANGERS



Temperature Control:

- | Electronic Control with digital display (factory setting +35 °C)

Colour:

- | RAL 7035

Protection category IP to IEC 60 529:

- | Internal circuit IP 54

Supply includes:

- | Complete unit ready for connection
- | Plug-in terminal strip
- | Floating fault signal contact in case of over temperature

MODEL	MOUNTING		THERMAL OUTPUT W/K	AIR THROUGHPUT (UNIMPEDED) M ³ /H	DIMENSIONS MM			IP/NEMA RATING
	WALL	ROOF			W	H	D	
3126100	X		17.5	265	280	550	150	54
3127100	X		30	480	400	950	205	54
3128100	X		45	600	400	950	205	54
3129100	X		60	860	400	950	225	54
3130100	X		90	850	400	1580	215	54
3248000		X	66	965	595	362	440	54

AIR/WATER HEAT EXCHANGERS



Description:

- | Output classes 375 – 7,000 W. For use in tough environments.
- | Convenient mounting options and flexible water connection options.
- | Partial or full internal mounting possible.

Colour:

- | RAL 7035

Protection category IP to IEC 60 529:

- | IP 55*

Supply includes:

- | Fully wired ready for connection (plug-in terminal strip)
- | Drilling template
- | Sealing and assembly parts

Note: Integral non-return valve for version with e-Comfort controller

MODEL	MOUNTING		WATER-CARRYING PARTS		TEMPERATURE CONTROLLER			TOTAL COOLING OUTPUT L35 W10 (KW)		DIMENSIONS MM			IP/NEMA RATING
	WALL	ROOF	COPPER/BRASS	STAINLESS STEEL	THERMOSTAT-CONTROLLED MAGNETIC VALVE	BASIC	E-COMFORT	200 L/H	400 L/H	W	H	D	
3212024	X		X					0.3		150	300	85	55
3212230	X		X					0.3		150	300	85	55
3363100	X		X				X		0.5	280	550	120	55
3363500	X		X				X		0.5	280	550	120	55
3214100	X		X		X			0.6	0.7	200	500	100	55
3364504	X			X			X		0.95	280	550	120	55
3364100	X		X				X		1	280	550	120	55
3364500	X		X				X		1	280	550	120	55
3215100	X		X		X			1.25	1.3	200	950	100	55
3373100	X		X				X		2	400	950	145	55
3373500	X		X				X		2	400	950	145	55
3374504	X			X			X		2.8	400	950	145	55
3374100	X		X				X		3	400	950	145	55
3374500	X		X				X		3	400	950	145	55
3375504	X			X			X		4.5	450	1400	220	55
3375100	X		X				X		5	450	1400	220	55
3375500	X		X				X		5	450	1400	220	55
3216480	X				X				7*	450	1800	300	55
3214700	X			X	X			0.6	0.65	220	526	100	4X
3215700	X			X	X			1	1.2	215	982	100	4X
3209504		X		X			X		1.88	597	417	475	55
3209100		X	X				X		2.5	597	417	475	55
3209500		X	X				X		2.5	597	417	475	55
3210504		X		X			X		3	597	417	475	55
3210100		X	X				X		4	597	417	475	55

CHILLER BLUE E+



Product description:

- | Blue e+ chillers ensure centralised and efficient cooling of liquid media with a high level of temperature accuracy and innovative DC inverter technology
- | Suitable for international use due to unique multivoltage capability (without rewiring) and high operating limits
- | Maximum reliability thanks to integral overflow valve and monitoring sensors
- | Intuitive operation due to touch display and intelligent interfaces

- | Compact and modular layout ensures minimum footprint
- | Pumps with highly efficient IE3 motors

Operating temperature range (environment):

- | +5°C...+50°C

Refrigerant/cooling medium:

- | R513A

PART NUMBER	COOLING OUTPUT (W)*	WIDTH MM	HEIGHT MM	DEPTH MM	RATED OPERATING VOLTAGE (V - HZ)
3320200	2500	400	820	670	380 - 450, 3~, 50 440 - 480, 3~, 60
3334300	4000	450	820	670	380 - 450, 3~, 50 440 - 480, 3~, 60
3334400	5500	450	1000	670	380 - 450, 3~, 50 440 - 480, 3~, 60

ENCLOSURE HEATERS



Product description:

- | SK Enclosure PTC heater, 8-150 W without fan, 250-800 W with fan, 110-240 V, 1~, 50/60 Hz, with quick connection terminal
- | Special voltages available on request
- | For precise temperature control inside the enclosure, we recommend the enclosure internal thermostat or the digital enclosure internal temperature display and thermostat.

| In order to prevent condensation on assembly, a hygostat is recommended to regulate heating.

Without Fan-Continuous Thermal Output 8-150 W

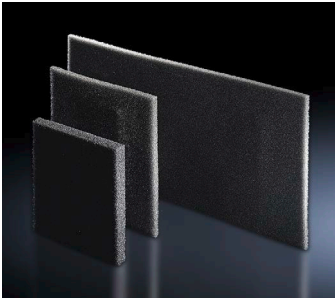
PART NUMBER	OPERATING THERMAL OUTPUT (W @ TU=10°C)	WIDTH MM	HEIGHT MM	DEPTH MM	OPERATING VOLTAGE (50/60HZ)	PRE-FUSE T
3105310	8 - 10	45	120	46	110-240V	2A
3105320	18 - 20	45	120	46	110-240V	2A
3105330	23 - 30	64	155	56	110-240V	4A
3105340	49 - 50	64	155	56	110-240V	4A
3105350	63 - 75	64	230	56	110-240V	4A
3105360	86 - 100	90	165	75	110-240V	4A
3105370	130 - 150	90	180	75	110-240V	4A

With Fan-Continuous Thermal Output 250-800 W

PART NUMBER	OPERATING THERMAL OUTPUT (W @ TU=10°C)	WIDTH MM	HEIGHT MM	DEPTH MM	OPERATING VOLTAGE (50/60HZ)	PRE-FUSE T
3105410	250	103	200	103	110	4A
3105380	250	103	200	103	230	4A
3105420	400	103	200	103	110	6A
3105390	400	103	200	103	230	6A
3105430	800	103	200	103	110	10A
3105400	800	103	200	103	230	6A

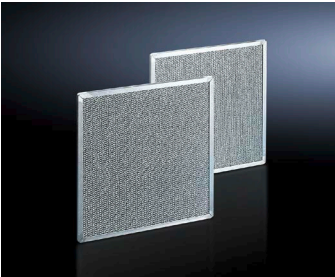
CLIMATE CONTROL ACCESSORIES

Filter Mats (for cooling units, air/air heat exchangers and chillers)



PART NUMBER	UNIT	DIMENSIONS MM	PACK OF
3286110	3302300/ 3302310	190 x 95 x 10	3
3286300	3302.../ 3303.../ 3361...	265 x 200 x 10	3
3286400	3304.../ 3305.../ 3328.../ 3329.../ 3332.../ 3366...	344 x 268 x 10	3
3286500	3273.../ 3382.../ 3383.../ 3384.../ 3385.../ 3359...	530 x 255 x 10	3
3286600	3386.../ 3387...	720 x 300 x 10	3
3253010	3377...	205 x 210 x 10	3
3285900	3186930 / 3187930 / 3188940 / 3189940	390 x 397 x 10	3

Metal Filters (for cooling units and chillers)



PART NUMBER	UNIT	DIMENSIONS MM	PACK OF
3286120	3302300/ 3302310	190 x 95 x 10	1
3286310	"3302100 / 3302110 / 3303.../ 3361..."	265 x 200 x 10	1
3286410	3304.../ 3305.../ 3328.../ 3329.../ 3332.../ 3366...	344 x 268 x 10	1
3286510	3273.../ 3382.../ 3383.../ 3384.../ 3385.../ 3359...	530 x 255 x 10	1
3286610	3386.../ 3387...	720 x 300 x 10	1
3285910	3186930 / 3187930 / 3188940 / 3189940	380 x 355 x 10	1
3285910	3186930 / 3187930 / 3188940 / 3189940	380 x 358 x 10	1

Chopped-Fibre Filter Mats (for fan/outlet filter)



PART NUMBER	FAN AND FILTER UNIT	FILTER CLASS DIN EN 779	PACK OF
3321700	3237...	G2	5
3322700	3238...	G2	5
3171100	3239...	G3	5
3172100	3240.../ 3241...	G3	5
3173100	3243.../ 3244...	G3	5
3174100	3138.../ 3139.../ 3140...	G3	12

Pleated Filter (for fan/outlet filter, cooling units and chillers)



PART NUMBER	UNIT	FILTER CLASS DIN EN 779	FILTER CLASS IEC 60 529	PACK OF
3171120	3239...	G4	IP 54	5
3172120	3240.../ 3241...	G4	IP 54	5
3173120	3240.../ 3241	G4	IP 54	5
3174120	3138.../ 3139.../ 3140...	M5	IP 54	12
3181125	3243.../ 3244.../ 3245...	-	IP 55	5
3182125	3239...	-	IP 55	5
3183125	3240.../ 3241...	-	IP 55	5
3238025	3243.../ 3244.../ 3245...	-	IP 55	5
3285700	3185.030/ 3185.730	G4	IP 54	3
3285940	3320.200/ 3334.300/ 3334.400	G3	-	3
3322720	3238...	G4	IP 54	5

CLIMATE CONTROL ACCESSORIES

IoT Interface

The IoT interface is used to link Rittal components such as Blue e+ cooling units, Blue e+ chillers, smart monitoring systems etc. to the customer's own monitoring and/or energy management systems. Data may be integrated both horizontally and vertically into data collectors and processors, to allow the long-term logging and evaluation of device data, statuses and system messages.

PART NUMBER	WIDTH MM	HEIGHT MM	DEPTH MM
3124300	18	117	120



Hose Proof Hood (for TopTherm fans and filter units)

Hose proof hood Stainless Steel (304) for TopTherm Fan and Filter units IP 56 when fitted over fan-and-filter unit/outlet filter with filter mat

PART NUMBER	FOR FAN AND FILTER UNIT	WIDTH MM	HEIGHT MM	DEPTH MM
3237080	3237...	150	230	40
3238080	3238...	176	245	55
3239080	3239...	233	330	55
3240080	3240.../ 3241...	282	390	85
3243080	3243.../ 3244...	350	480	110
3245080	3245...	350	480	160



Control Regulation (for TopTherm fans and filter units)

PART NUMBER	DESCRIPTION	PACK OF
3110000	Thermostat	1
3118000	Hygrostat	1

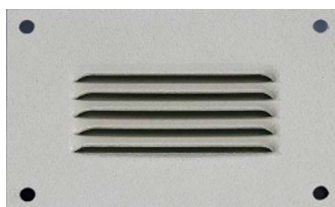


Air Duct System (for roof-mounted cooling units)

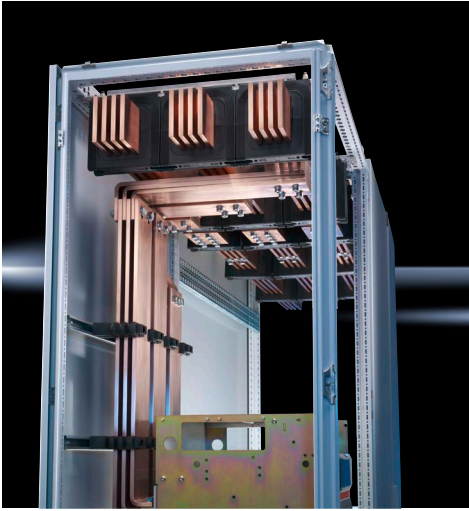
PART NUMBER	FOR UNIT	PACK OF
3286870	3209.../ 3210.../ 3273.../ 3359.../ 3382.../ 3383.../ 3384.../ 3385...	1
3286970	3386.../ 3387...	1

Metal Louvres

PART NUMBER	FOR UNIT	PACK OF
2541235	LOUVRE PLATE 160X110MM RAL7035	4
XAURWB504	S/S LOUVRE PLATE 126W X 114H	1



POWER DISTRIBUTION



Modular system

- | For low-voltage switchgear with design verification to IEC 61 439-1/-2
- | For control systems and power distributors
- | Structured system solution for switch gear with Form separation 1-4b
- | Simple, installation-friendly configuration of the system



Busbar systems up to 5500 A

- | RiLine - The compact busbar system up to 1600 A
- | Maxi-PLS - The assembly-friendly system
- | Flat-PLS - The flat busbar system for discerning requirements
- | Tested PE conductor system



Modular enclosure system

- | Based on enclosure platform TS 8
- | Flexible, modular front design
- | Roof plates to suit most requirements
- | Modular compartment configuration for internal compartmentalisation up to Form 4b
- | Internal cover plates, contact hazard protection for NH fuse-switch-disconnector sections Form 2b
- | Accessories for Ri4Power



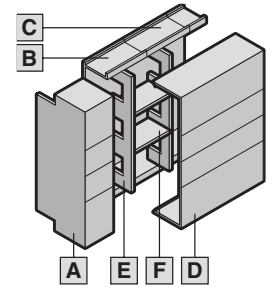
Simple planning

- | Rittal Power Engineering with update function
- | Configuration of low-voltage switchgear with design verification
- | Simple, fast assembly with automatically generated assembly plan
- | Generation of parts list with graphical output

RILINE ACCESSORIES

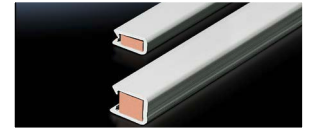
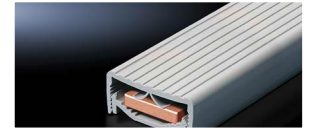
RiLine Busbar Assembly

DESIGNATION	DESCRIPTION	SUB-DESCRIPTION	QTY /PACK	800A FLAT CU, 30X10 PART NUMBER	1600A PLS CU PART NUMBER
	Busbar support	3P	4	9340000	9342000
	Busbar support	4P	4	9340004	9342004
A	End covers	3P	2	9340070	9342070
A	End covers	4P	2	9340074	9342074
B	Base tray, 1100mm	3P	2	9340130	9342130
B		4P	2	9340134	9342134
D	Cover sections, 1100mm	3P	2	9340210	9340210
D	Cover sections, 1100mm	4P	2	9340214	9340214
E	Support panels	3P	5	9340220	9340220
E	Support panels	4P	5	9340224	9340224



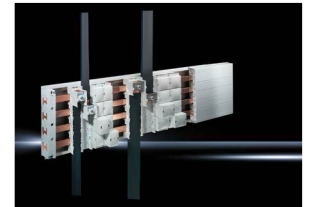
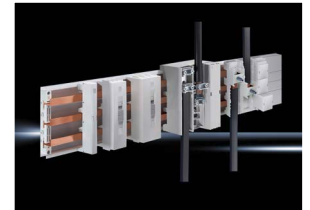
PLS Special Cu Busbars, 1600A

RATING	DESCRIPTION	LENGTH	QUANTITY/PACK	PART NUMBER
1600A	PLS cu busbars	L = 1750 mm	1	9675240
1600A	PLS cu busbars	L = 1950 mm	1	9675242
1600A	PLS cu busbars	L = 2400 mm	1	3516000
	Busbar sleeves, 30x10, 1M		4	3092000
	Busbar sleeves, 60x10, 1M		2	3085000



Cable Connection Adaptors

RATING	DESCRIPTION	QUANTITY/PACK	PART NUMBER
63A, 3P	63A, 690V Top connect, 2.5-10mm ² Round Conductor	1	9342200
63A, 3P	63A, 690V Bottom connect, 2.5-10mm ² Round Conductor	1	9342210
125A, 3P	125A, 690V Top/Bottom connect, 10-35mm ² Round, clamping area 10 x 7.8 mm	1	9342240
250A, 3P	250A, 690V Top/Bottom connect, 35-120mm ² , clamping area 18.5 x 15.5 mm	1	9342270
600A, 3P	600A, 690V Top/Bottom connect, 35-240mm ² , clamping area 24 x 21 mm	1	3439010
800A, 3P	800A, 690V Top/Bottom connect, 95-300mm ² , clamping area 33 x 20 mm	1	9342310
800A, 1P	800A, 690V Expansion set to make 4P 95-120mm ² , clamping area 33 x 21/26 mm	1	9342314
1600A, 3P	1600A, 690V Top/Bottom connect, 65 x 27 x 5 mm, clamping area 65 x 22 x 10 mm	1	9342320
1600A, 1P	1600A, 690V Expansion set to make 4P 65 x 22/27mm	1	9342324



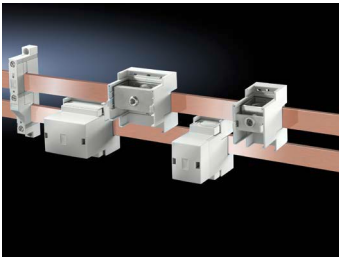
MCCB Adaptors

RATING	DESCRIPTION	QUANTITY/PACK	PART NUMBER
100A, 3P	100A Bottom connect, 10 - 35 mm ² , 10 x 7.8mm Cu	1	9342410
125A, 3P	125A Bottom connect, 35 - 120 mm ² , 18.5 x 15.5mm Cu	1	9342550
160A, 3P	160A Bottom connect, 35 - 120 mm ² , 18.5 x 15.5mm Cu	1	9342510
250A, 3P	250A Bottom connect, with copper connection tails	1	9345610
400A, 3P	400A Bottom connect, with copper connection tails	1	9345730
630A, 3P	630A Bottom connect, with copper connection tails	1	9345710



RILINE ACCESSORIES

Overload Motor (OM) Adaptors



RATING	DESCRIPTION	QUANTITY/ PACK	PART NUMBER
16A, 3P	16A OM Adaptor with connection cables, 45W x 272H, AWG 12	1	9340760
25A, 3P	25A OM Adaptor with connection cables, 45W x 208H, AWG 12	1	9340320
32A, 3P	32A OM Adaptor with connection cables, 45W x 272H, AWG 10	1	9340770
32A, 3P	32A OM Adaptor with connection cables, 55W x 208H, AWG 10	1	9340470
40A, 3P	40A OM Adaptor with connection cables, 55W x 272H, AWG 8	1	9340730
40A, 3P	40A OM Adaptor with connection cables, 75W x 208H, AWG 8	1	9340710
65A, 3P	65A OM Adaptor with connection cables, 55W x 272H, AWG 6	1	9340450
65A, 3P	65A OM Adaptor with connection cables, 75W x 208H, AWG 6	1	9340700

Overload Motor (OM) Accessories

DESCRIPTION	QUANTITY/PACK	PART NUMBER
Connection pin	20	9340280
Insert strip	2	9340290
Sliding blocks	6	9342640
Connection brackets	3	9342570

RiLine Accessories

Conductor Connection Clamps

BAR THICKNESS	DESCRIPTION	QTY/PACK	PART NUMBER
10mm	Conductor connection clamps, Push In 1.5-16 mm ²	10	3456505
	Laminated flexible copper bar 415A, W:15,5 x H:4,8 mm, L: 2000 mm	1	3568005
	Laminated flexible copper bar 605A, W:24 x H:5 mm, L: 2000 mm	1	3571005
	Laminated flexible copper bar 920A, W:24 x H:10 mm, L: 2000 mm	1	3572005
	Laminated flexible copper bar 1155A, W:32 x H:10 mm, L: 2000 mm	1	3574005
	Laminated flexible copper bar 1635A, W:50 x H:10 mm, L: 2000 mm	1	3578005
	Universal support, for laminated copper bar, WH: 20x5-63x10 mm	3	3079000
	Busbar support, 2-pole, 60 mm bar centre distance, for busbar WH: 12x5 - 30x10 mm, E & N	4	9340040

Note: All above items are indent products (2-3 weeks via air freight)



PERFOREX CUSTOM SOLUTIONS

CUSTOM SOLUTIONS FROM STANDARD RITTAL STEEL ENCLOSURES

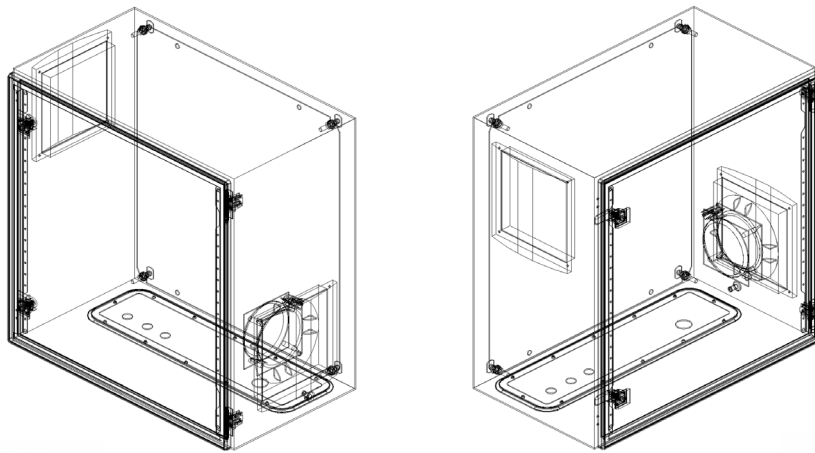
As the national distributor of Rittal enclosures, we understand that some projects require unique solutions. Our APS Modification service is here to meet those needs.


Our modification program allows for precise customisations of small, medium, and large Rittal enclosures. Whether you need cutouts for fans and filters, push buttons, or multi-pole connectors, our advanced Perforex machine and skilled modification team will tailor the enclosures to your exact specifications.

How to Place an Order:

1. Reference the Rittal enclosure part number (xxxx.xxx).
2. Attach detailed drawings and specifications. We accept files in Eplan, DWG, DXF, or Rittal Configurator formats.
3. Ensure all cutouts, holes, and thread specifications are clearly indicated.

For projects that demand something different, our APS Modification service provides the precise, customized solutions you need. Ask about our optional fitting of fans and filters to ensure your enclosure meets all your requirements.



Scan the QR Code or follow the  YouTube link below to see the drilling and milling centres from Rittal Automation Systems in action.

<https://www.youtube.com/watch?v=6FbjYGjactM>



FAST AND RELIABLE MACHINING AND ASSEMBLY SERVICE

MODIFICATION CENTRE

When it comes to industrial enclosures, one size does not fit all. Each application is unique, every industry has its own demands and requirements, and companies striving to compete on a global stage or in a variant-rich marketplace must be flexible and agile to respond to unpredictable market forces.

APS's commitment to industry-leading products and services goes beyond supplying modular enclosures. We offer best-in-class custom modifications that not only help companies meet the demands of their industry but also aid in better understanding their business potential and goals by reengineering their value chain.

This is where APS's value proposition as a partner in the industrial enclosure and automation space becomes clear. Simply put, we supply the most efficient and durable enclosures on the market, and we customize them to exact specifications in a cost-effective and scalable manner.

STATE-OF-THE-ART EQUIPMENT

Perforex MT2201S:

A 4-axis CNC machine renowned for its precision and Reliability.

Automated Machining:

Ensures accuracy and consistency in every cut.

Wide Work-piece Holder:

Perfect for handling fully welded enclosures.



VERSATILE CAPABILITIES

Hole Drilling:

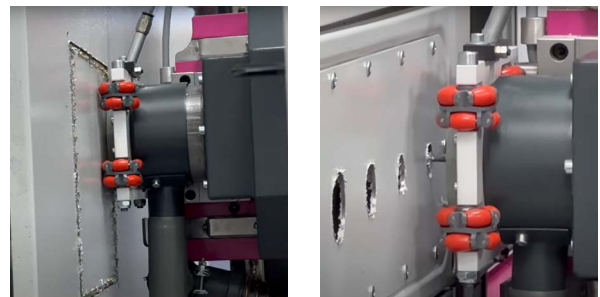
Perfectly positioned and accurately sized holes.

Tapping:

Flawless tapping of threads for secure fastening.

Cut-Outs:

Custom shapes and sizes to meet your specific requirements.



COST-EFFECTIVE

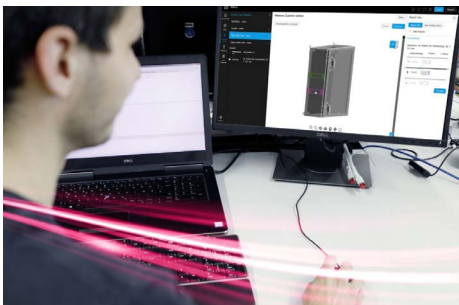
Reduce Manual Labor:

Save on time and labour costs with our automated system.

IDEAL FOR VARIOUS APPLICATIONS

Electrical Enclosures, Control Panels, Junction Boxes

CONFIGURATION MADE EASY



Large industrial enclosures



Small and compact enclosures

rittal.com/au-en/Rittal-Configuration-System





OUR LOCATIONS

National footprint with strategic local stockholdings.

APS Industrial is headquartered in Melbourne and in addition has a national network of offices in Adelaide, Perth, Sydney, Brisbane and Tasmania supported by strategic local stockholdings and expert technical and application knowledge.

apsindustrial.com.au

CONNECT WITH US



MELBOURNE

5-7 Corporate Ave,
Rowville, Melbourne VIC 3178
Ph: (03) 8514 3500
Sales: 1300 309 303
Email: vic@apsindustrial.com.au

SYDNEY

391 Park Rd, Block P,
Regents Park, NSW, 2143
Ph: (02) 8898 6200
Sales: 1300 309 303
Email: nsw@apsindustrial.com.au

BRISBANE

49 Borthwick Avenue,
Murarrie, Brisbane, QLD, 4172
Ph: (07) 3063 3100
Sales: 1300 309 303
Email: qld@apsindustrial.com.au

ADELAIDE

159-163 Caulfield Ave,
Clarence Gardens, SA 5039
Ph: (08) 8111 5100
Sales: 1300 309 303
Email: sa@apsindustrial.com.au

PERTH

5 Glyde Court, Malaga,
Malaga, Perth WA 6090
Ph: (08) 6118 5300
Sales: 1300 309 303
Email: wa@apsindustrial.com.au

HOBART

441A Macquarie Street,
South Hobart, TAS, 7004
Sales: 1300 309 303
Email: tas@apsindustrial.com.au